

PRELIMINARY PLAT OF LOTS 1-4, BLOCK 6, OF RED ROCK ESTATES PHASE 1A

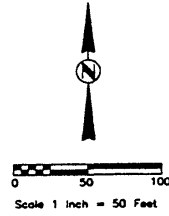
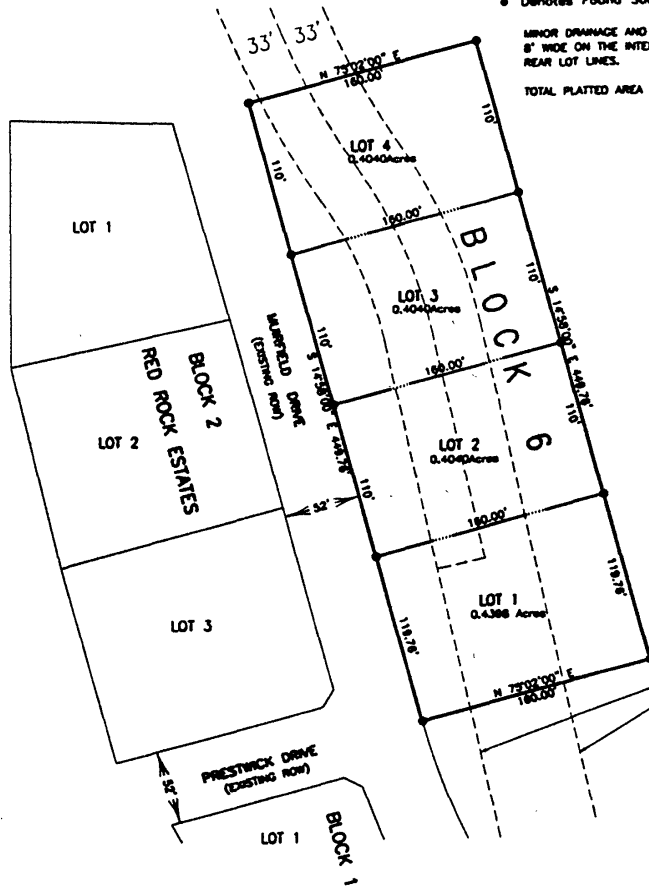
LOCATED IN THE NE 1/4 OF SECTION 29, T1N, R7E, B9M
RAPID CITY, PENNINGTON COUNTY, SOUTH DAKOTA

NOTES:

- Denotes set 3/8" rebar with survey cap marked "TISK 1771".
- Denotes Found Survey Monument.

MINOR DRAINAGE AND UTILITY EASEMENTS RESERVED
8' WIDE ON THE INTERIOR SIDE OF ALL SIDE AND
REAR LOT LINES.

TOTAL PLATTED AREA 1.6518 Ac.



66' UTILITY EASEMENT &
PLATTED PRIVATE ROADWAY
(PICARDI RANCH ROAD)
BOOK 24, PAGE 158)

ACCEPTANCE OF THIS PLAT HEREBY
VACATES THIS UTILITY EASEMENT &
PLATTED PRIVATE ROADWAY WITHIN
THE BOUNDARIES OF THIS PLAT.
(PICARDI RANCH ROAD)
BOOK 24, PAGE 158)

RECEIVED

DEC 11 2000

Rapid City
Planning Department