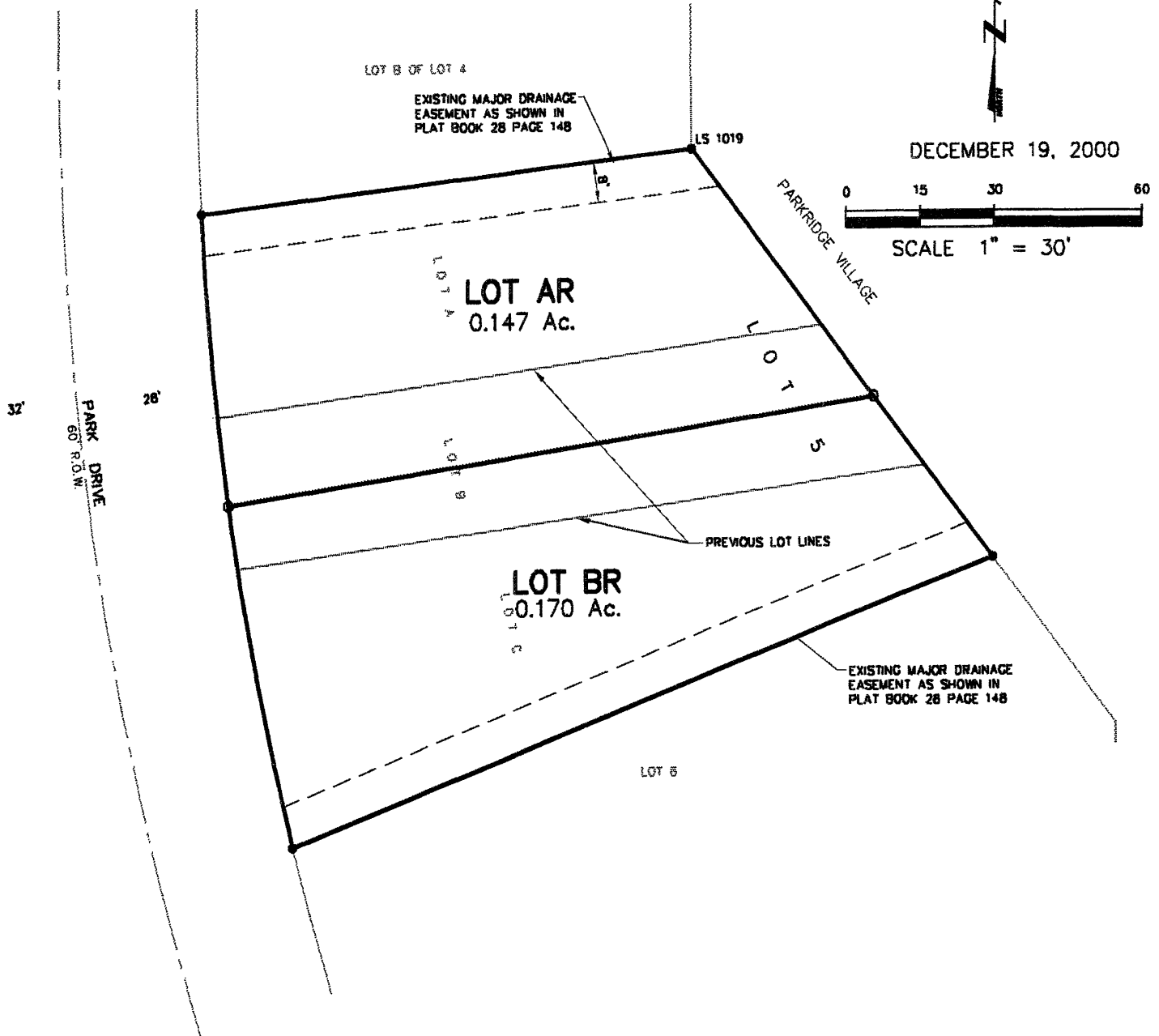


00PL135 PLAT OF
LOT AR AND LOT BR OF BLOCK 1
OF PARKRIDGE VILLAGE NO. 2

(formerly Lots A, B, and C of Lot 5 of Block 1 of Parkridge Village No. 2)
LOCATED IN THE NW1/4 OF THE NE1/4 OF
SECTION 16, T1N, R7E, BHM
RAPID CITY, PENNINGTON COUNTY, SOUTH DAKOTA



Renner & Sperlich Engineering Co.

616 Sixth St. • Rapid City, SD 57701 • 605/342-1191
FAX: 605/342-1405 • E-MAIL: RSEC@RAPIDNET.COM