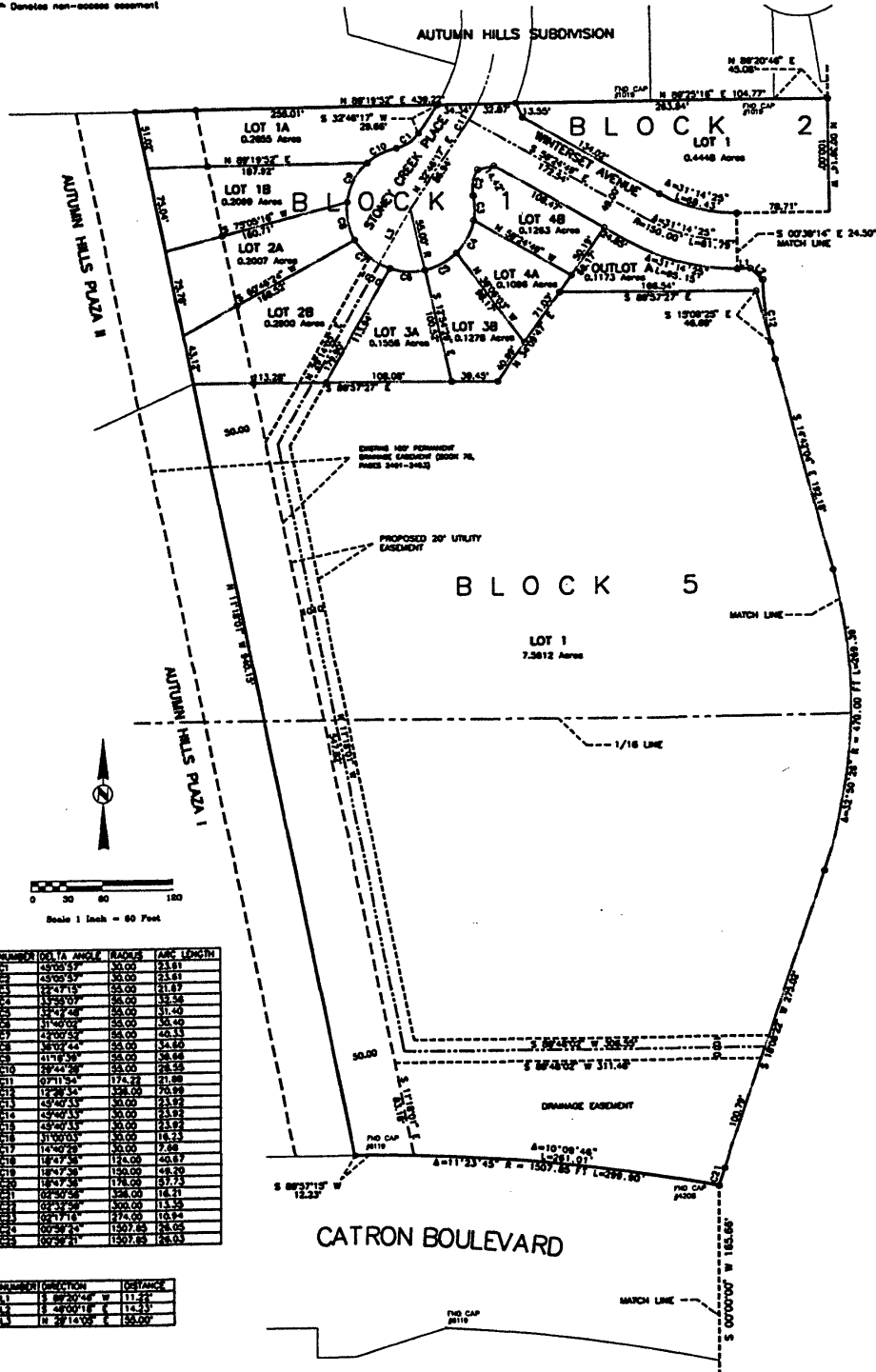


	PREPARED BY: ARLETH & ASSOCIATES	382 MAIN STREET DEADWOOD, SD 57733 605-678-1637	JOB NO. _____ DATE: _____ SCALE: _____ DRAWN: _____	APPROVED: _____ DWG: _____
--	---	--	--	---

PRELIMINARY PLAT OF STONEY CREEK SUBDIVISION PHASE I
 LOTS 1A-4B, BLOCK 1; LOTS 1-3, BLOCK 2; LOTS 1-23, BLOCK 3;
 LOTS 1-4, BLOCK 4; AND LOT 1, BLOCK 5.

LOCATED IN THE SW 1/4 OF THE NW 1/4, AND THE NW 1/4 OF THE SW 1/4, AND THE SE 1/4 OF THE SW 1/4
 OF SECTION 22, T1N, R7E, BMM; RAPID CITY, PENNINGTON COUNTY, SOUTH DAKOTA

- NOTES**
- Denotes set 5/8" rebar with survey cap marked "ARLETH 3877".
 - Denotes Found Survey Monument w/cap as noted.
 - Denotes non-easement



NUMBER	BEARING	ANGLE	DISTANCE	ARC LENGTH
001	S 89°15'32" E	135.00	13.50	13.51
002	S 22°48'11" W	28.68	28.68	23.61
003	N 89°15'32" E	135.00	13.50	13.51
004	S 89°15'32" E	135.00	13.50	13.51
005	S 89°15'32" E	135.00	13.50	13.51
006	S 89°15'32" E	135.00	13.50	13.51
007	S 89°15'32" E	135.00	13.50	13.51
008	S 89°15'32" E	135.00	13.50	13.51
009	S 89°15'32" E	135.00	13.50	13.51
010	S 89°15'32" E	135.00	13.50	13.51
011	S 89°15'32" E	135.00	13.50	13.51
012	S 89°15'32" E	135.00	13.50	13.51
013	S 89°15'32" E	135.00	13.50	13.51
014	S 89°15'32" E	135.00	13.50	13.51
015	S 89°15'32" E	135.00	13.50	13.51
016	S 89°15'32" E	135.00	13.50	13.51
017	S 89°15'32" E	135.00	13.50	13.51
018	S 89°15'32" E	135.00	13.50	13.51
019	S 89°15'32" E	135.00	13.50	13.51
020	S 89°15'32" E	135.00	13.50	13.51
021	S 89°15'32" E	135.00	13.50	13.51
022	S 89°15'32" E	135.00	13.50	13.51
023	S 89°15'32" E	135.00	13.50	13.51
024	S 89°15'32" E	135.00	13.50	13.51
025	S 89°15'32" E	135.00	13.50	13.51
026	S 89°15'32" E	135.00	13.50	13.51
027	S 89°15'32" E	135.00	13.50	13.51
028	S 89°15'32" E	135.00	13.50	13.51
029	S 89°15'32" E	135.00	13.50	13.51
030	S 89°15'32" E	135.00	13.50	13.51
031	S 89°15'32" E	135.00	13.50	13.51
032	S 89°15'32" E	135.00	13.50	13.51
033	S 89°15'32" E	135.00	13.50	13.51
034	S 89°15'32" E	135.00	13.50	13.51
035	S 89°15'32" E	135.00	13.50	13.51
036	S 89°15'32" E	135.00	13.50	13.51
037	S 89°15'32" E	135.00	13.50	13.51
038	S 89°15'32" E	135.00	13.50	13.51
039	S 89°15'32" E	135.00	13.50	13.51
040	S 89°15'32" E	135.00	13.50	13.51
041	S 89°15'32" E	135.00	13.50	13.51
042	S 89°15'32" E	135.00	13.50	13.51
043	S 89°15'32" E	135.00	13.50	13.51
044	S 89°15'32" E	135.00	13.50	13.51
045	S 89°15'32" E	135.00	13.50	13.51
046	S 89°15'32" E	135.00	13.50	13.51
047	S 89°15'32" E	135.00	13.50	13.51
048	S 89°15'32" E	135.00	13.50	13.51
049	S 89°15'32" E	135.00	13.50	13.51
050	S 89°15'32" E	135.00	13.50	13.51
051	S 89°15'32" E	135.00	13.50	13.51
052	S 89°15'32" E	135.00	13.50	13.51
053	S 89°15'32" E	135.00	13.50	13.51
054	S 89°15'32" E	135.00	13.50	13.51
055	S 89°15'32" E	135.00	13.50	13.51
056	S 89°15'32" E	135.00	13.50	13.51
057	S 89°15'32" E	135.00	13.50	13.51
058	S 89°15'32" E	135.00	13.50	13.51
059	S 89°15'32" E	135.00	13.50	13.51
060	S 89°15'32" E	135.00	13.50	13.51
061	S 89°15'32" E	135.00	13.50	13.51
062	S 89°15'32" E	135.00	13.50	13.51
063	S 89°15'32" E	135.00	13.50	13.51
064	S 89°15'32" E	135.00	13.50	13.51
065	S 89°15'32" E	135.00	13.50	13.51
066	S 89°15'32" E	135.00	13.50	13.51
067	S 89°15'32" E	135.00	13.50	13.51
068	S 89°15'32" E	135.00	13.50	13.51
069	S 89°15'32" E	135.00	13.50	13.51
070	S 89°15'32" E	135.00	13.50	13.51
071	S 89°15'32" E	135.00	13.50	13.51
072	S 89°15'32" E	135.00	13.50	13.51
073	S 89°15'32" E	135.00	13.50	13.51
074	S 89°15'32" E	135.00	13.50	13.51
075	S 89°15'32" E	135.00	13.50	13.51
076	S 89°15'32" E	135.00	13.50	13.51
077	S 89°15'32" E	135.00	13.50	13.51
078	S 89°15'32" E	135.00	13.50	13.51
079	S 89°15'32" E	135.00	13.50	13.51
080	S 89°15'32" E	135.00	13.50	13.51
081	S 89°15'32" E	135.00	13.50	13.51
082	S 89°15'32" E	135.00	13.50	13.51
083	S 89°15'32" E	135.00	13.50	13.51
084	S 89°15'32" E	135.00	13.50	13.51
085	S 89°15'32" E	135.00	13.50	13.51
086	S 89°15'32" E	135.00	13.50	13.51
087	S 89°15'32" E	135.00	13.50	13.51
088	S 89°15'32" E	135.00	13.50	13.51
089	S 89°15'32" E	135.00	13.50	13.51
090	S 89°15'32" E	135.00	13.50	13.51
091	S 89°15'32" E	135.00	13.50	13.51
092	S 89°15'32" E	135.00	13.50	13.51
093	S 89°15'32" E	135.00	13.50	13.51
094	S 89°15'32" E	135.00	13.50	13.51
095	S 89°15'32" E	135.00	13.50	13.51
096	S 89°15'32" E	135.00	13.50	13.51
097	S 89°15'32" E	135.00	13.50	13.51
098	S 89°15'32" E	135.00	13.50	13.51
099	S 89°15'32" E	135.00	13.50	13.51
100	S 89°15'32" E	135.00	13.50	13.51

NUMBER	DIRECTION	DISTANCE
11	S 89°15'32" E	13.50
12	S 22°48'11" W	28.68
13	N 89°15'32" E	13.50
14	S 89°15'32" E	13.50

K:\DDI-PROJECTS\BENDT3-PLAT\BENDT3-plat.dwg, 12/08/2000 12:42:17 PM, HP Color LaserJet 4500.pc3, 1:148.607