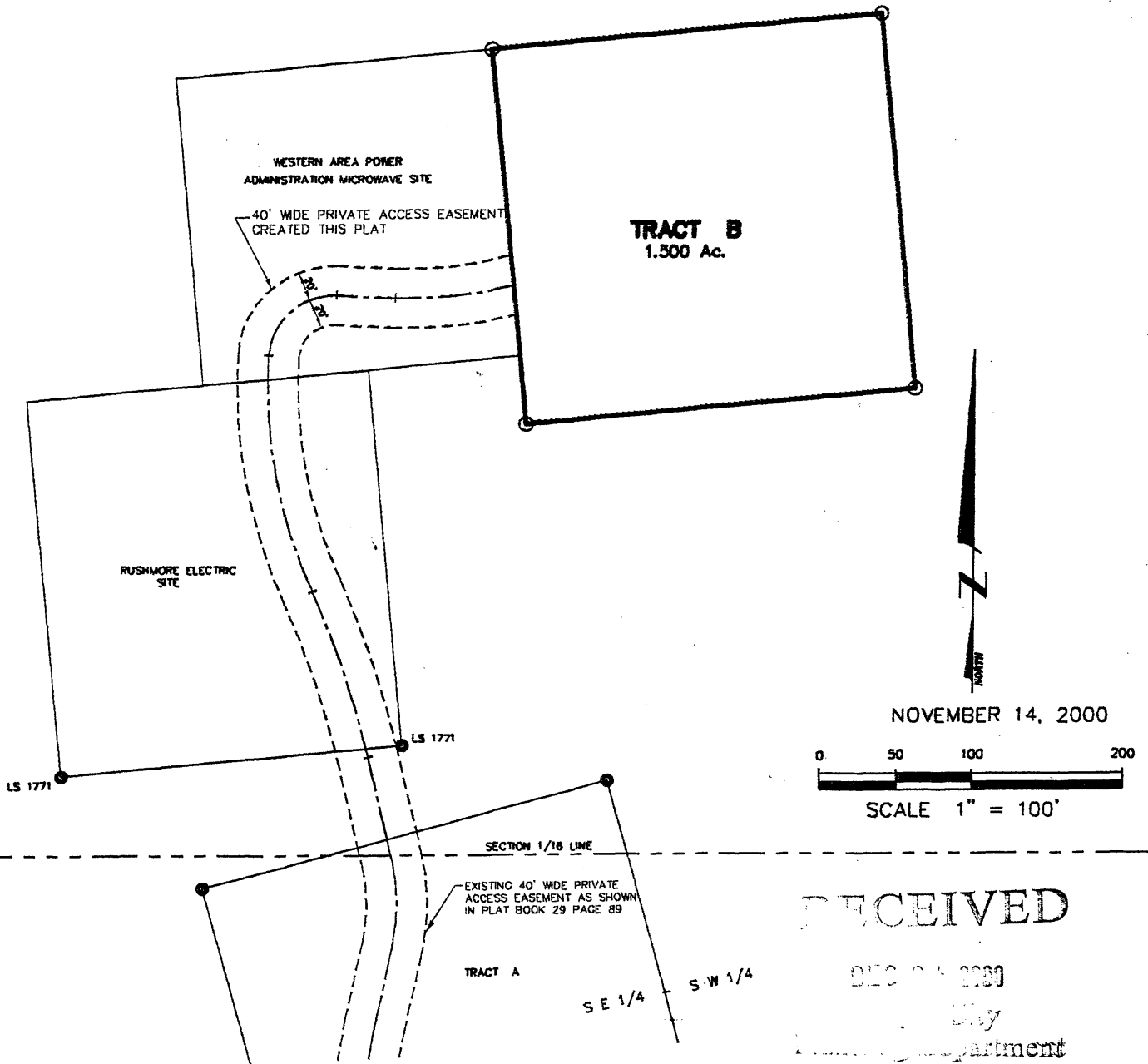


00PL121

PLAT OF
TRACT B AND EASEMENT
LOCATED IN THE NE1/4 OF THE SW1/4
SECTION 23, T2N, R7E, BHM
PENNINGTON COUNTY, SOUTH DAKOTA



Renner & Sperlich Engineering Co.

616 Sixth St. • Rapid City, SD 57701 • 605/342-1191
FAX: 605/342-1405 • E-MAIL: RSEC@RAPIDNET.COM