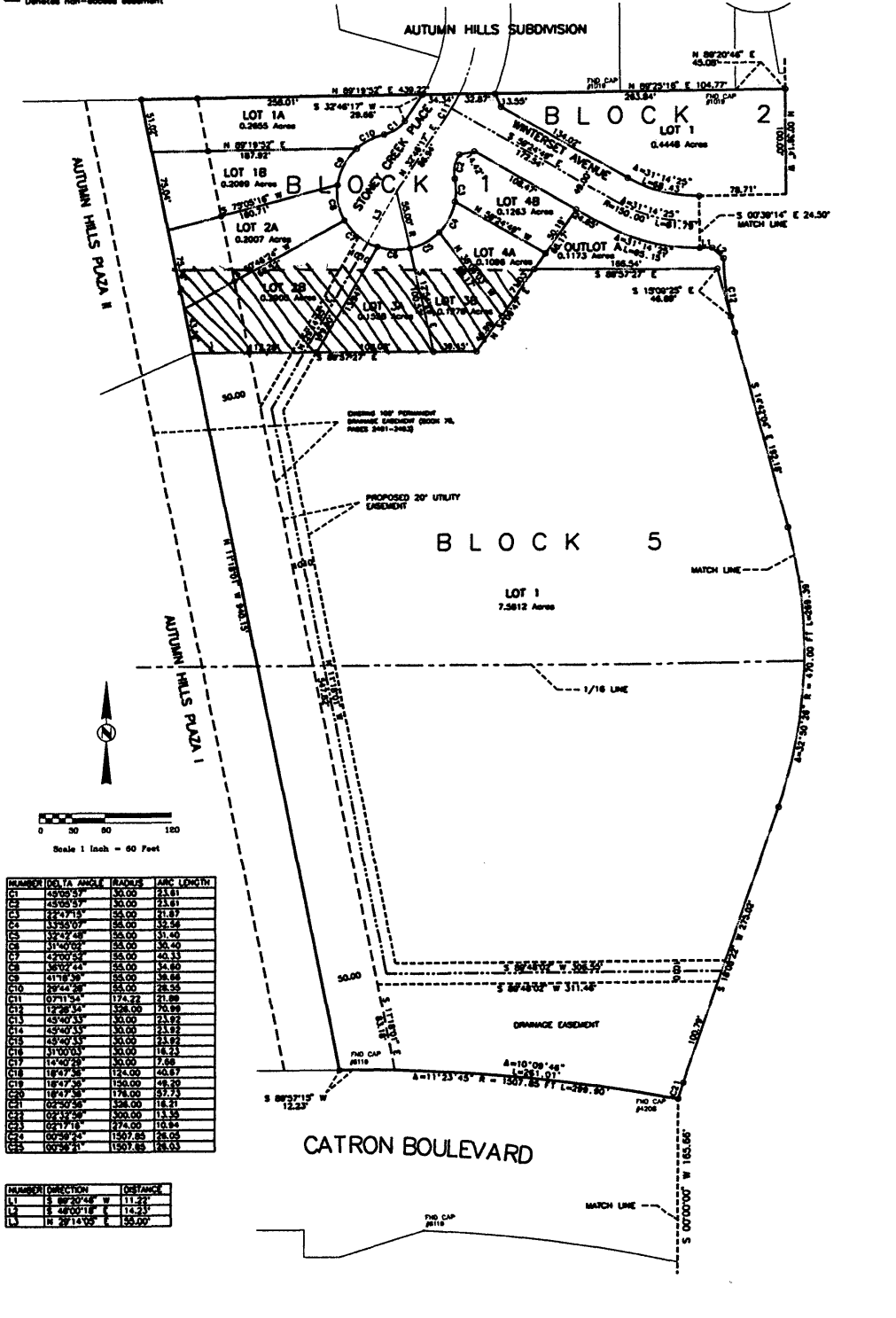


00RZ057

**PRELIMINARY PLAT OF STONEY CREEK SUBDIVISION PHASE I**  
**LOTS 1A-4B, BLOCK 1; LOTS 1-3, BLOCK 2; LOTS 1-23, BLOCK 3;**  
**LOTS 1-4, BLOCK 4; AND LOT 1, BLOCK 5.**

LOCATED IN THE SW 1/4 OF THE NW 1/4, AND THE NW 1/4 OF THE SW 1/4, AND THE SE 1/4 OF THE SW 1/4 OF SECTION 22, T1N, R7E, B4M; RAPID CITY, PENNINGTON COUNTY, SOUTH DAKOTA

- NOTES:**
- Denotes set 5/8" rebar with survey cap marked "ARLETH 3877".
  - Denotes Found Survey Monument w/cap as noted.
  - Denotes non-access easement



NUMBER	LOS IN ANGLE	RADIUS	ARC LENGTH
1	43°23'37"	35.00	21.61
2	23°55'37"	35.00	21.61
3	22°17'15"	35.00	21.67
4	32°23'07"	35.00	23.54
5	17°42'48"	35.00	23.40
6	31°40'25"	35.00	26.40
7	42°00'55"	35.00	40.23
8	18°07'24"	35.00	23.68
9	41°18'28"	35.00	28.86
10	29°44'38"	35.00	28.54
11	07°11'54"	174.72	21.88
12	12°28'35"	138.00	24.99
13	45°00'35"	35.00	23.82
14	45°00'35"	35.00	23.82
15	43°00'35"	35.00	23.82
16	43°00'35"	35.00	23.82
17	14°00'25"	35.00	7.88
18	18°07'38"	124.00	40.67
19	18°47'38"	130.00	48.30
20	18°47'38"	118.00	37.73
21	02°50'28"	138.00	16.31
22	02°50'28"	300.00	13.55
23	02°17'18"	274.00	10.84
24	02°50'28"	118.00	12.58
25	02°50'28"	150.00	18.03

NUMBER	DIRECTION	DISTANCE
11	S 89°20'48" W	11.25
12	S 48°00'18" E	14.25
13	N 29°15'05" E	150.00

<p><b>PREPARED BY:</b> ARLETH &amp; ASSOCIATES</p>	<p>382 MAIN STREET DEADWOOD, SD 57732 605-578-1837</p>	<p>JOB NO. _____</p>	<p>DATE: 12/02 _____</p>	<p>APPROVED: _____</p>
			<p>SCALE: 1" = 60' _____</p>	<p>DWG: _____</p>