

LAYOUT PLAT

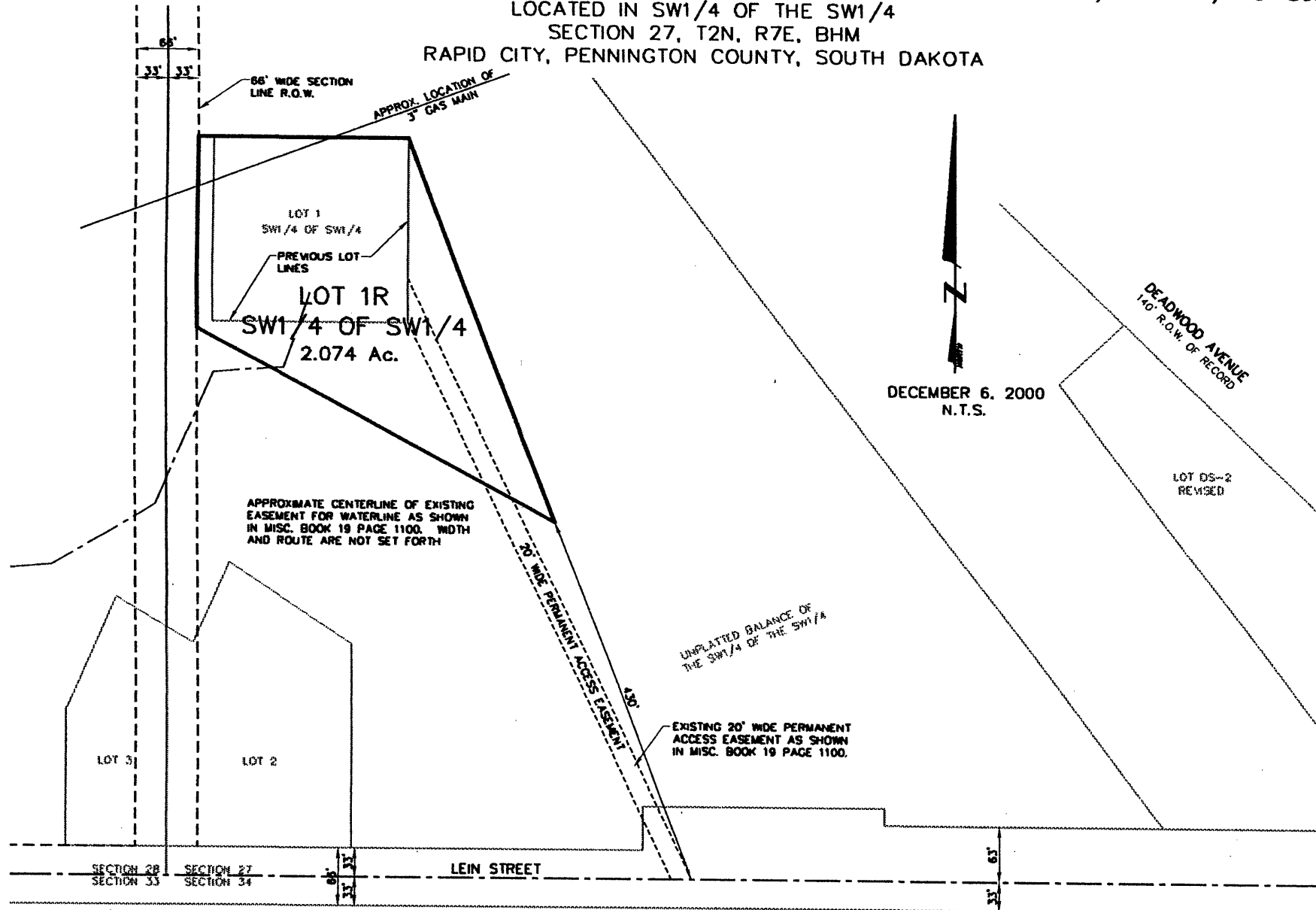
00PL123

LOT 1R OF SW1/4 OF SW1/4 OF SECTION 27

(formerly Lot 1 of SW1/4 of SW1/4 of Section 27 and a portion of the unplatted balance of SW1/4 of SW1/4 of Section 27)
LOCATED IN SW1/4 OF THE SW1/4

SECTION 27, T2N, R7E, BHM

RAPID CITY, PENNINGTON COUNTY, SOUTH DAKOTA



DECEMBER 6, 2000
N.T.S.

Renner & Sperlich Engineering Co.

616 Sixth St. • Rapid City, SD 57701 • 605/342-1191
FAX: 605/342-1405 • E-MAIL: RSECRAPIDNET.COM