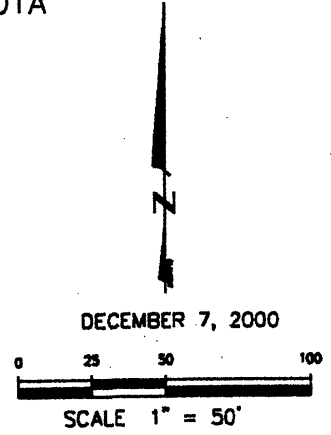
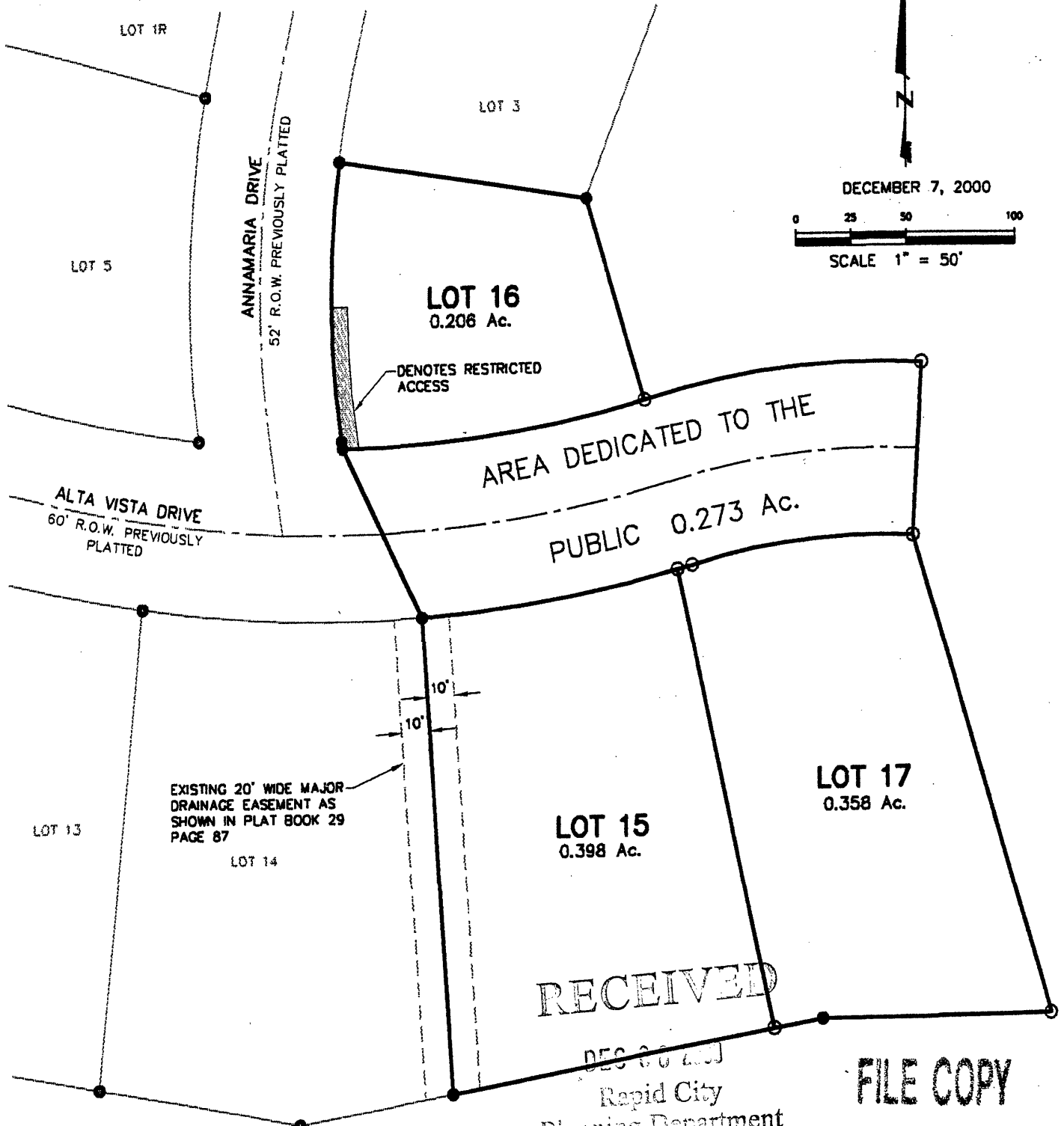


00PL097

PLAT OF LOTS 15, 16 AND 17 OF BLOCK 28 OF ROBBINSDALE ADDITION NO. 10

(formerly a portion of Block 28 and a portion of the NE1/4 of the SW1/4 of Section 13)
LOCATED IN THE NE1/4 OF THE SW1/4
SECTION 13, T1N, R7E, BHM
RAPID CITY, PENNINGTON COUNTY, SOUTH DAKOTA



RECEIVED

DEC 20 2000

Rapid City
Planning Department

FILE COPY



Renner & Sperlich Engineering Co.

616 Sixth St. • Rapid City, SD 57701 • 605/342-1191
FAX: 605/342-1405 • E-MAIL: RSEC@RAPIDNET.COM