

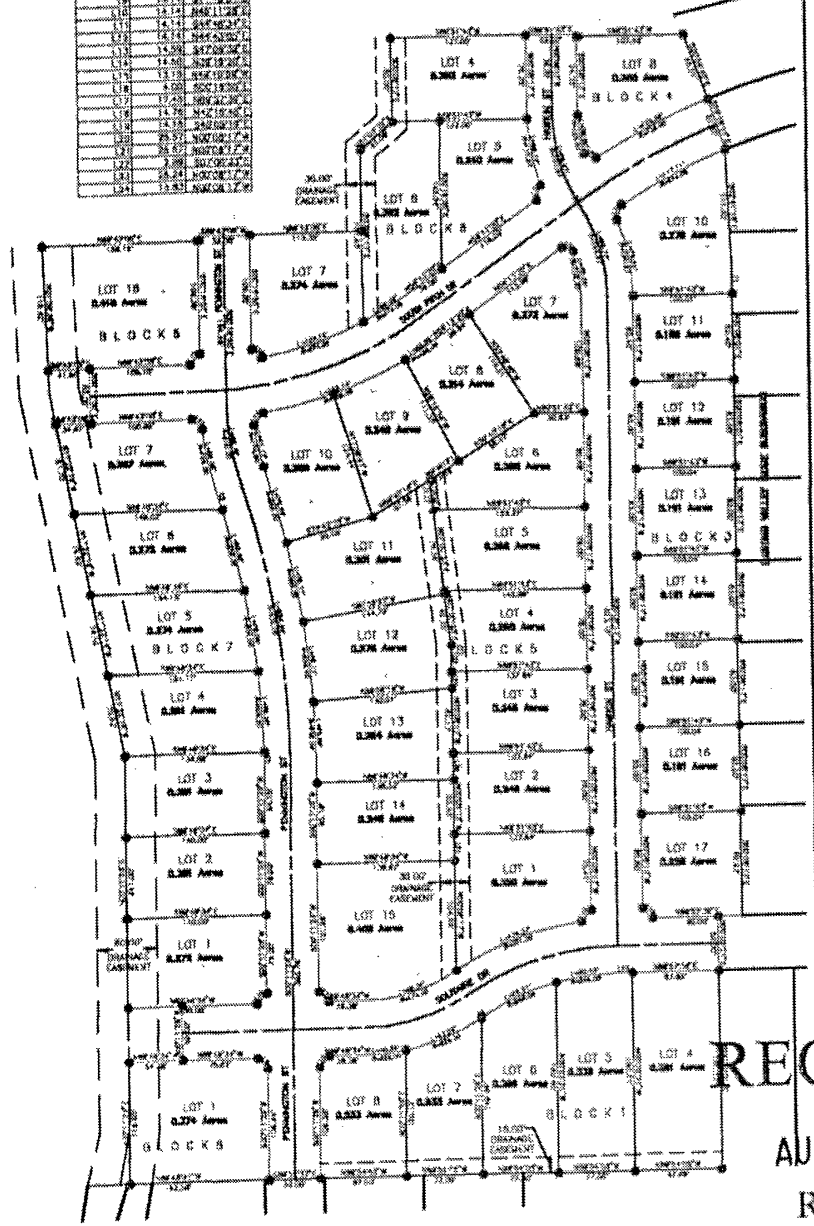
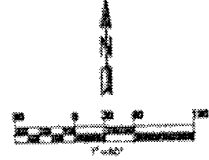
83-0625

PRELIMINARY PLAT OF
 LOTS 4-8, BLOCK 1 AND LOTS 10-17, BLOCK 3
 LOT 4, BLOCK 4 AND LOTS 1-15, BLOCK 5 AND
 LOTS 4-7, 15, BLOCK 6 AND LOTS 1-7 BLOCK 7
 AND LOT 1, BLOCK 8
 Located to NE 1/4 of SE 1/4 of Section 3, T14, R16, B14,
 Pennington County, South Dakota.

Prepared by
 Dream Design International, Inc.
 342 Calhoun Street, Suite 104
 Rapid City, SD 57701
 605/344-0434

LINE	TYPE	BEARING	LENGTH
1	17.4	S07°04'17"W	17.4
2	17.4	S07°04'17"W	17.4
3	17.4	S07°04'17"W	17.4
4	17.4	S07°04'17"W	17.4
5	17.4	S07°04'17"W	17.4
6	17.4	S07°04'17"W	17.4
7	17.4	S07°04'17"W	17.4
8	17.4	S07°04'17"W	17.4
9	17.4	S07°04'17"W	17.4
10	17.4	S07°04'17"W	17.4
11	17.4	S07°04'17"W	17.4
12	17.4	S07°04'17"W	17.4
13	17.4	S07°04'17"W	17.4
14	17.4	S07°04'17"W	17.4
15	17.4	S07°04'17"W	17.4
16	17.4	S07°04'17"W	17.4
17	17.4	S07°04'17"W	17.4
18	17.4	S07°04'17"W	17.4
19	17.4	S07°04'17"W	17.4
20	17.4	S07°04'17"W	17.4
21	17.4	S07°04'17"W	17.4
22	17.4	S07°04'17"W	17.4
23	17.4	S07°04'17"W	17.4
24	17.4	S07°04'17"W	17.4
25	17.4	S07°04'17"W	17.4
26	17.4	S07°04'17"W	17.4
27	17.4	S07°04'17"W	17.4
28	17.4	S07°04'17"W	17.4
29	17.4	S07°04'17"W	17.4
30	17.4	S07°04'17"W	17.4
31	17.4	S07°04'17"W	17.4
32	17.4	S07°04'17"W	17.4

LINE	LENGTH	BEARING	AREA	PERCENT
1	17.4	S07°04'17"W	17.4	100%
2	17.4	S07°04'17"W	17.4	100%
3	17.4	S07°04'17"W	17.4	100%
4	17.4	S07°04'17"W	17.4	100%
5	17.4	S07°04'17"W	17.4	100%
6	17.4	S07°04'17"W	17.4	100%
7	17.4	S07°04'17"W	17.4	100%
8	17.4	S07°04'17"W	17.4	100%
9	17.4	S07°04'17"W	17.4	100%
10	17.4	S07°04'17"W	17.4	100%
11	17.4	S07°04'17"W	17.4	100%
12	17.4	S07°04'17"W	17.4	100%
13	17.4	S07°04'17"W	17.4	100%
14	17.4	S07°04'17"W	17.4	100%
15	17.4	S07°04'17"W	17.4	100%
16	17.4	S07°04'17"W	17.4	100%
17	17.4	S07°04'17"W	17.4	100%
18	17.4	S07°04'17"W	17.4	100%
19	17.4	S07°04'17"W	17.4	100%
20	17.4	S07°04'17"W	17.4	100%
21	17.4	S07°04'17"W	17.4	100%
22	17.4	S07°04'17"W	17.4	100%
23	17.4	S07°04'17"W	17.4	100%
24	17.4	S07°04'17"W	17.4	100%
25	17.4	S07°04'17"W	17.4	100%
26	17.4	S07°04'17"W	17.4	100%
27	17.4	S07°04'17"W	17.4	100%
28	17.4	S07°04'17"W	17.4	100%
29	17.4	S07°04'17"W	17.4	100%
30	17.4	S07°04'17"W	17.4	100%
31	17.4	S07°04'17"W	17.4	100%
32	17.4	S07°04'17"W	17.4	100%



RECEIVED
 AUG 25 2000
 Rapid City
 Planning Department

**VALLEY RIDGE SUBDIVISION
 PHASE III
 PRELIMINARY PLAT**

NO.	DATE	DESCRIPTION
1	08/25/00	PRELIMINARY PLAT
2	08/25/00	PRELIMINARY PLAT
3	08/25/00	PRELIMINARY PLAT
4	08/25/00	PRELIMINARY PLAT
5	08/25/00	PRELIMINARY PLAT
6	08/25/00	PRELIMINARY PLAT
7	08/25/00	PRELIMINARY PLAT
8	08/25/00	PRELIMINARY PLAT
9	08/25/00	PRELIMINARY PLAT
10	08/25/00	PRELIMINARY PLAT
11	08/25/00	PRELIMINARY PLAT
12	08/25/00	PRELIMINARY PLAT
13	08/25/00	PRELIMINARY PLAT
14	08/25/00	PRELIMINARY PLAT
15	08/25/00	PRELIMINARY PLAT
16	08/25/00	PRELIMINARY PLAT
17	08/25/00	PRELIMINARY PLAT

D.D.I.
DREAM DESIGN INTERNATIONAL, INC.
 PROFESSIONAL STRUCTURAL & CIVIL ENGINEERING CONSULTANTS
 342 CALHOUN STREET, SUITE 104, RAPID CITY, SD 57701
 TEL: 605-344-0434 FAX: 605-344-0434 EMAIL: info@dreamdesign.com