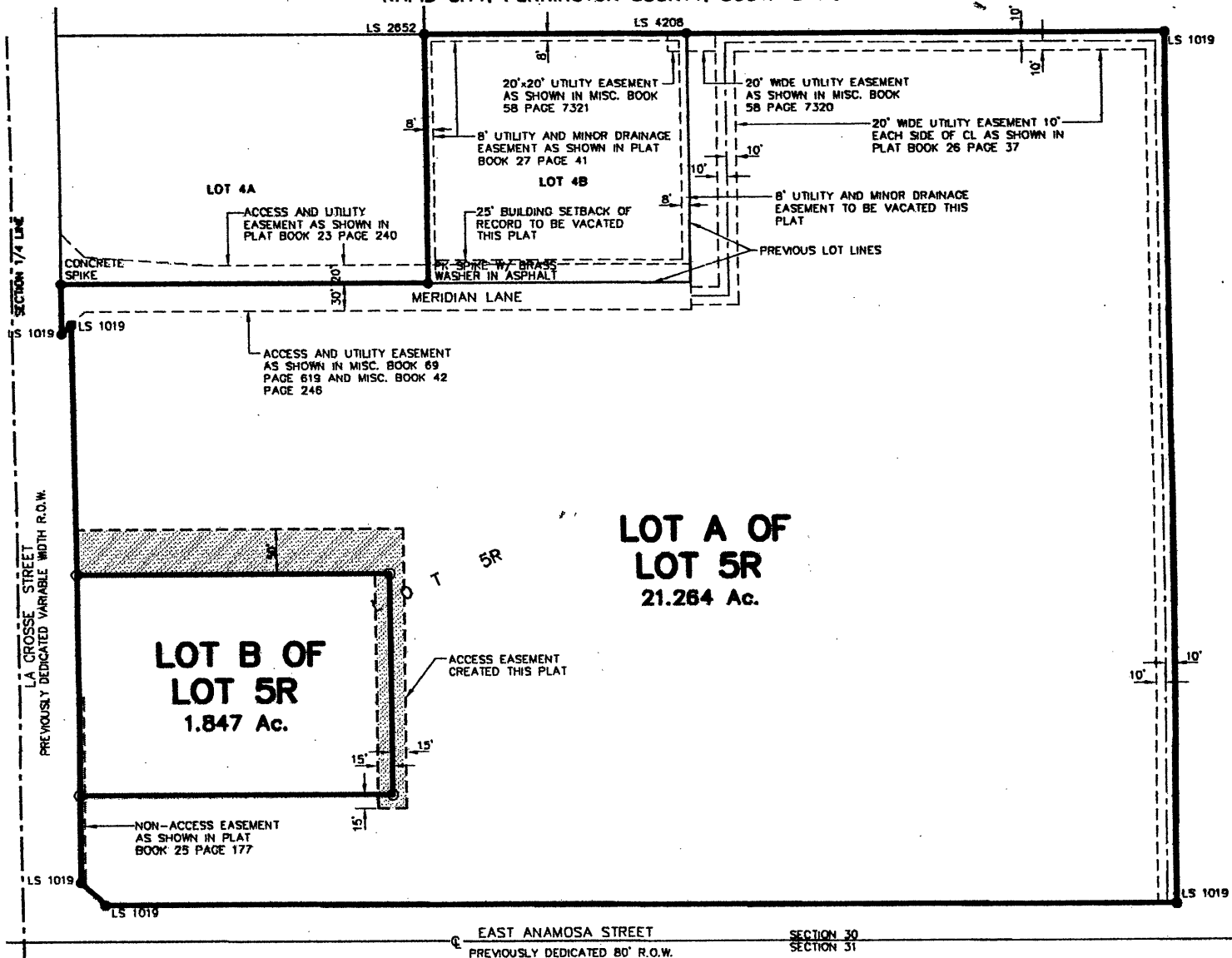


PLAT OF
LOTS A & B OF LOT 5R
MERIDIAN SUBDIVISION
 (formerly Lot 4B and Lot 5R of Meridian Subdivision)
 LOCATED IN THE SW1/4 OF THE SE1/4
 SECTION 30, T2N, R8E, BHM
 RAPID CITY, PENNINGTON COUNTY, SOUTH DAKOTA

00PL110



Renner & Sperlich Engineering Co.

616 Sixth St. • Rapid City, SD 57701 • 605/342-1191
 FAX: 605/342-1405 • E-MAIL: RSEC@RAPIDNET.COM

OCTOBER 10, 2000
 N.T.S.