

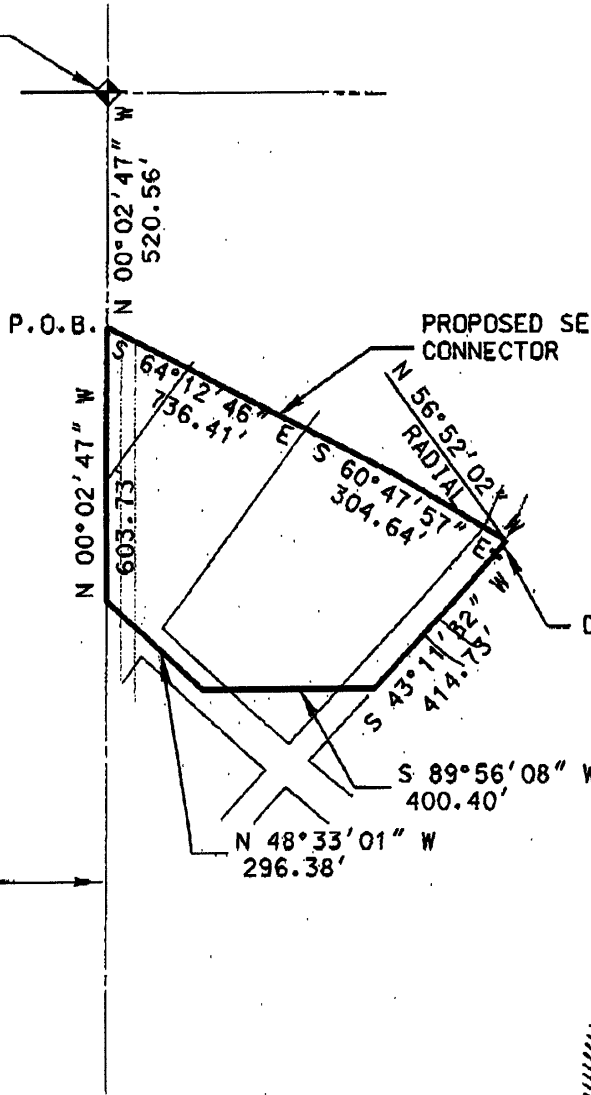
00RZ051

# PLUM CREEK DEVELOPMENT

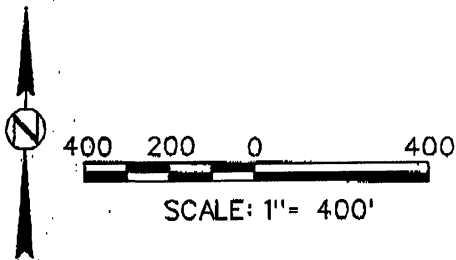
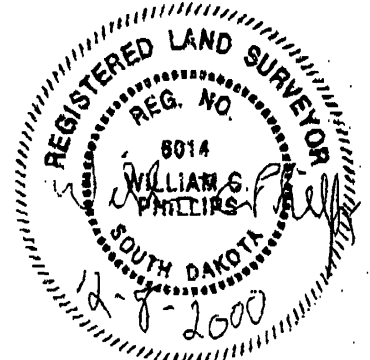
## PARCEL B (GENERAL COMMERCIAL)

LOCATED IN THE SW 1/4 OF SECTION 16,  
T1N, R8E, B.H.M., PENNINGTON COUNTY, SOUTH DAKOTA

NW CORNER OF THE  
SW 1/4 SECTION 16



ROADS SHOWN ARE PROPOSED ROADS.



### SKETCH FOR ZONING DESCRIPTION

