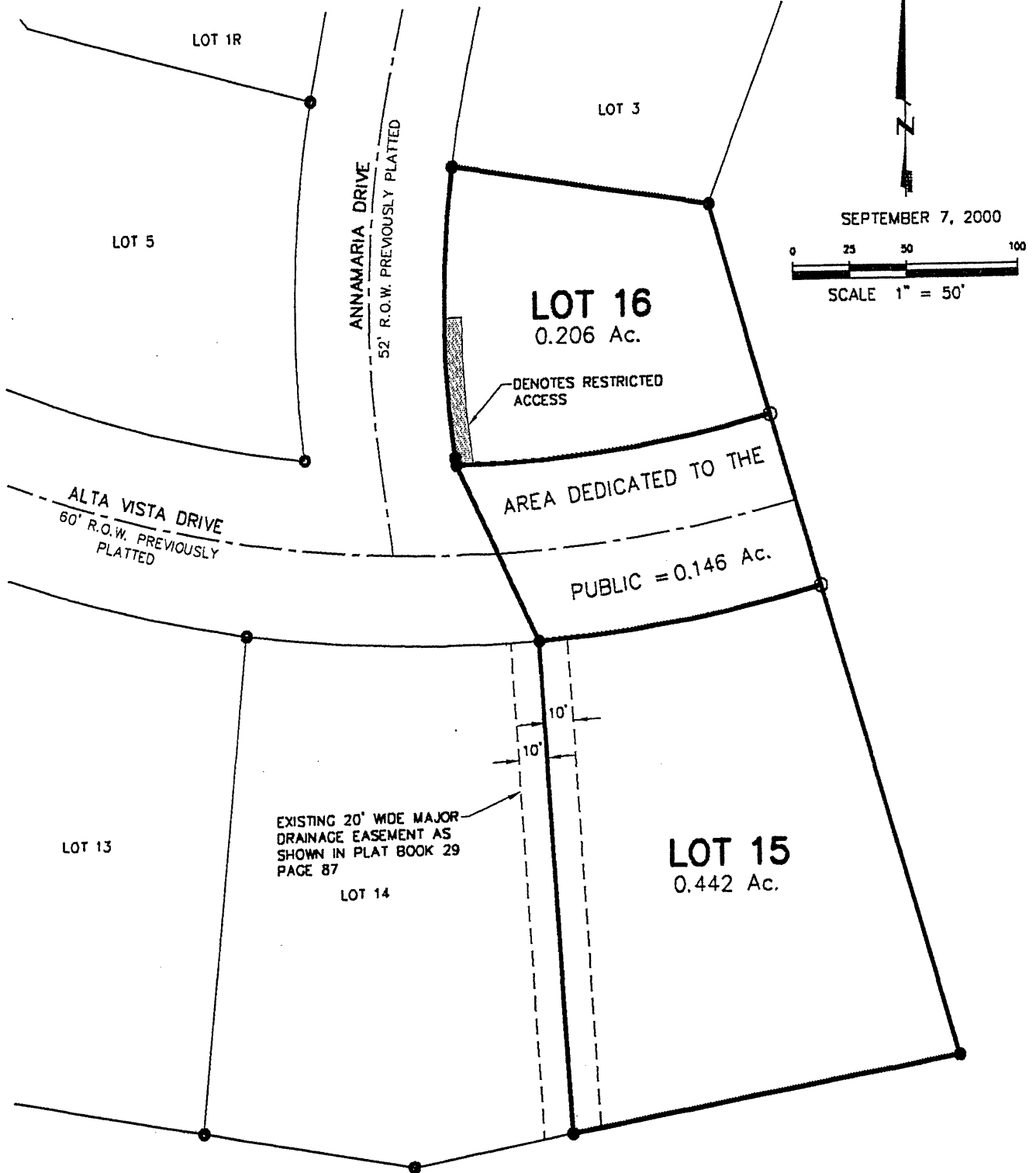


00PLO97

# PLAT OF LOT 15 AND 16 OF BLOCK 28 OF ROBBINSDALE ADDITION NO. 10

LOCATED IN THE NE1/4 OF THE SW1/4  
SECTION 13, T1N, R7E, BHM  
RAPID CITY, PENNINGTON COUNTY, SOUTH DAKOTA



## Renner & Sperlich Engineering Co.

616 Sixth St. • Rapid City, SD 57701 • 605/342-1191  
FAX: 605/342-1405 • E-MAIL: RSEC@RAPIDNET.COM