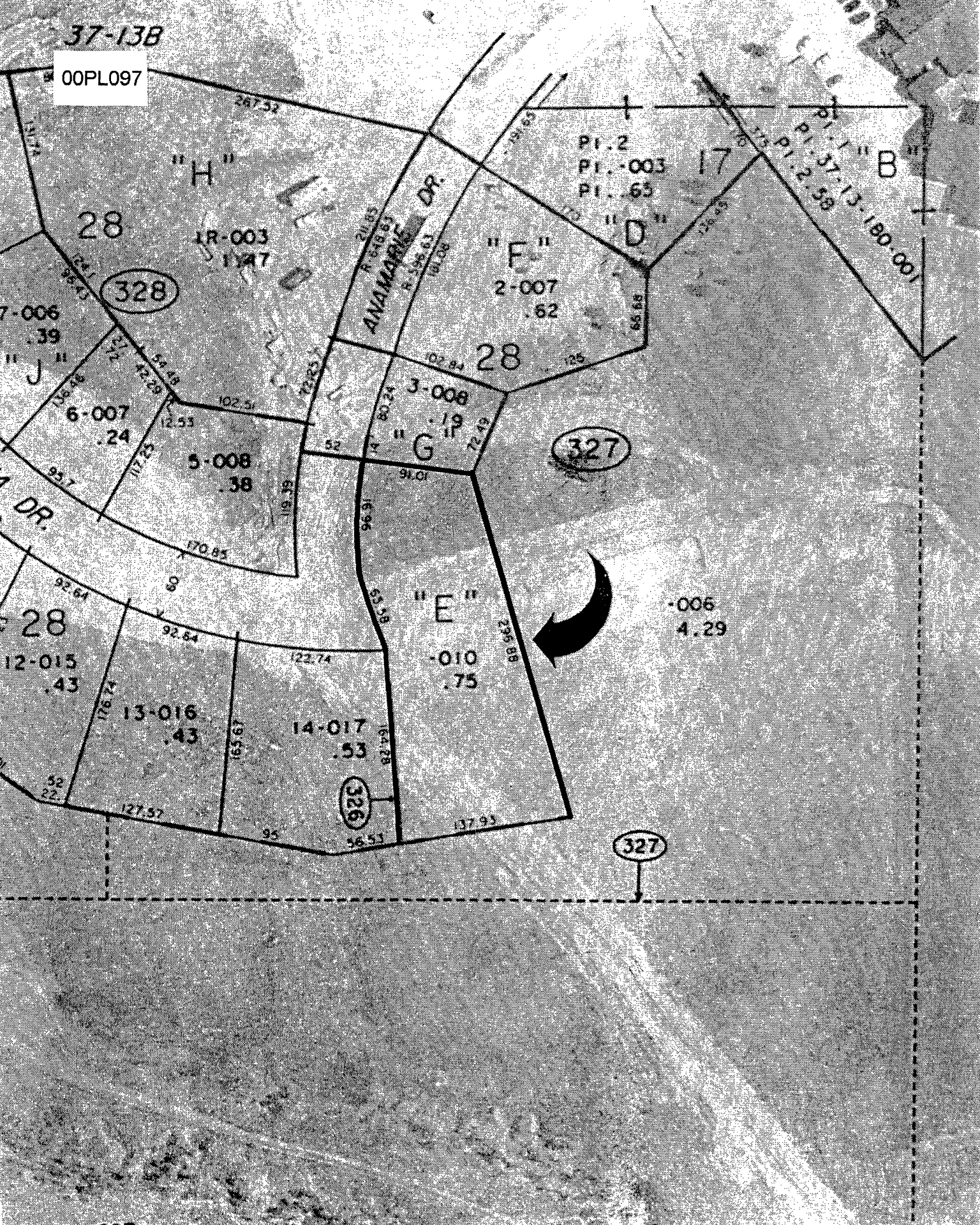


37-13B

00PL097



"H"

28

(328)

1R-003
1987

ANAMORPHIC DR.

"F"

28

3-008
19

(327)

"E"

-010
.75

-006
4.29



(326)

(327)

"B"

17

Pl. 2
Pl. -003
Pl. 63

Pl. 1
Pl. 37-13-180-001
Pl. 2-58

DR.

28

12-015
.43

13-016
.43

14-017
.53

28

52
22

127.57

165.67

95

56.53

137.93

164.28

82.28

295.88

85.58

96.91

52

72.25

72.25

119.58

170.85

117.25

12.53

102.51

102.51

124.1

95.43

117.4

267.32

20.83

R-6-18-83

R-5-25-63

141.08

141.08

141.08

141.08

141.08

141.08

141.08

141.08

141.08

141.08

141.08

141.08

141.08

141.08

141.08

141.08

141.08

141.08

141.08

141.08

141.08

141.08

141.08

141.08

141.08

141.08