

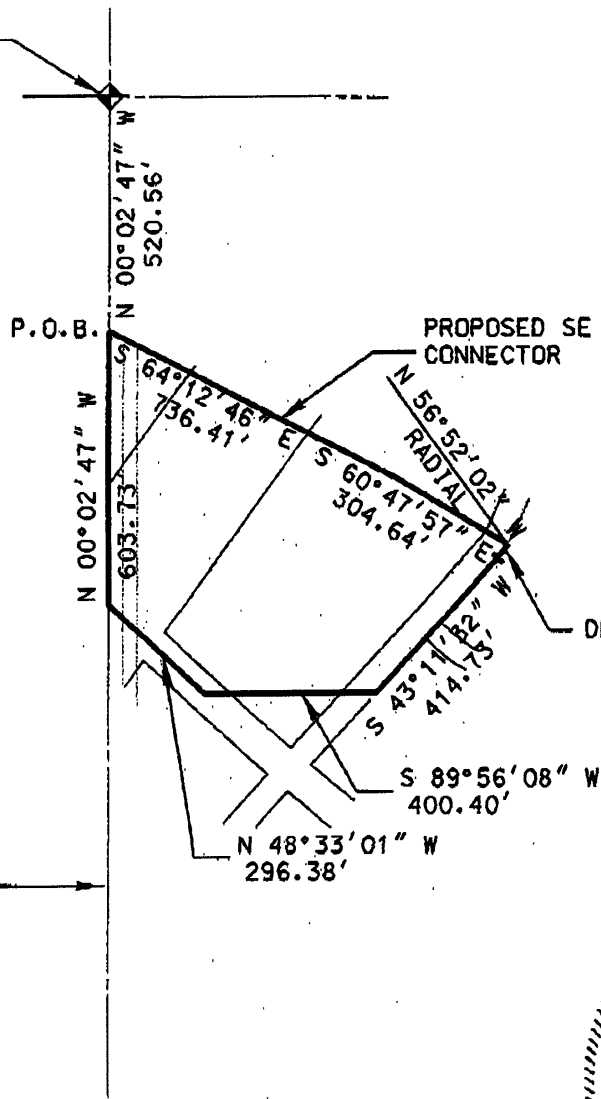
00PD064

PLUM CREEK DEVELOPMENT

PARCEL B (GENERAL COMMERCIAL)

LOCATED IN THE SW 1/4 OF SECTION 16,
T1N, R8E, B.H.M., PENNINGTON COUNTY, SOUTH DAKOTA

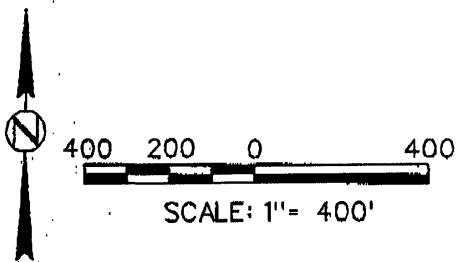
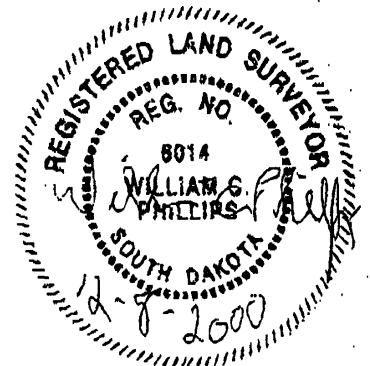
NW CORNER OF THE
SW 1/4 SECTION 16



DELTA = 10° 03' 33"
R = 204.00'
L = 35.82'

WEST LINE
SW 1/4 SECTION 16

ROADS SHOWN ARE PROPOSED ROADS.



SKETCH FOR ZONING DESCRIPTION

