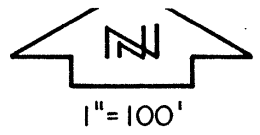


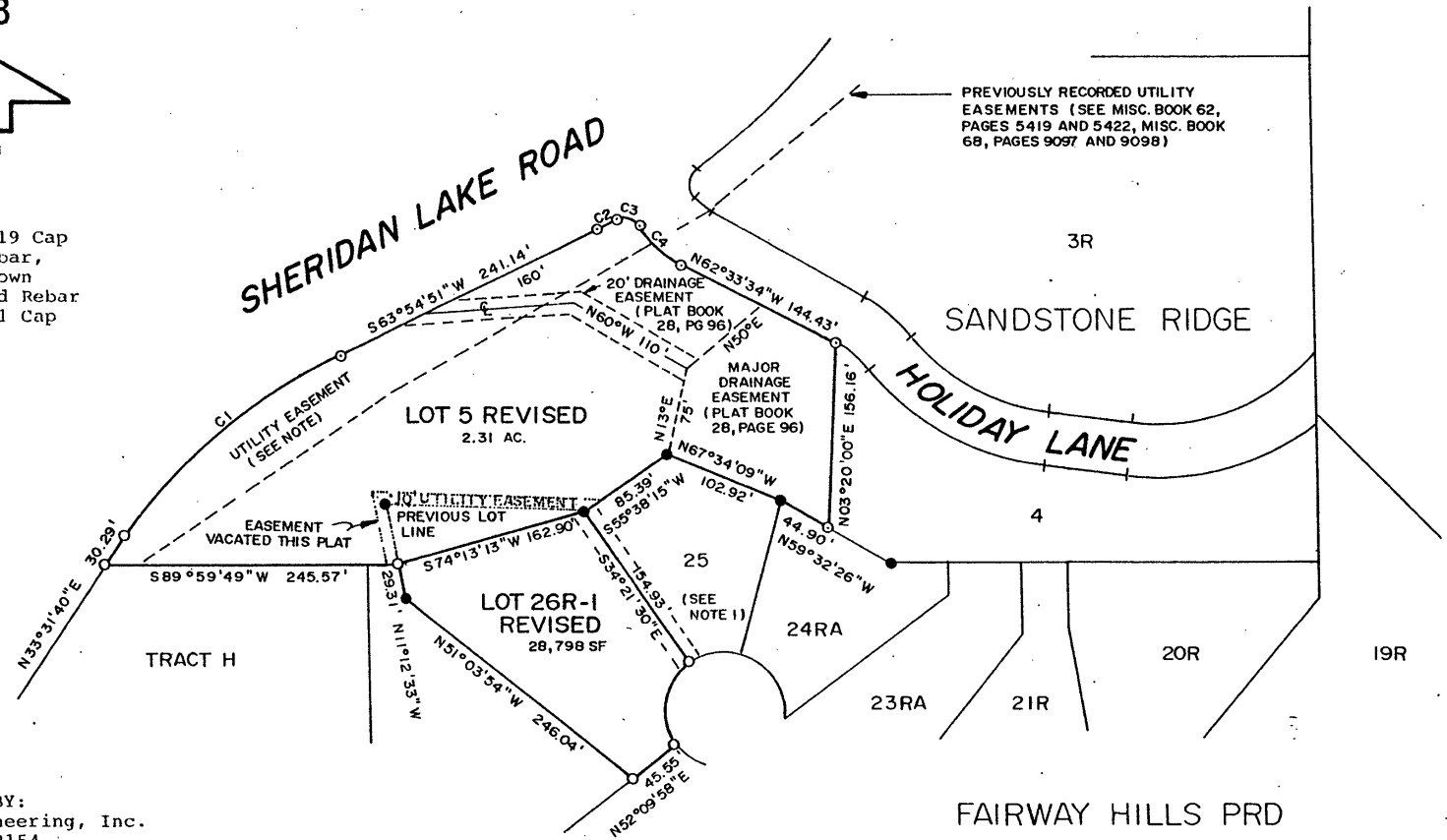
# PLAT OF LOT 5 REVISED OF SANDSTONE RIDGE SUBDIVISION AND LOT 26R-1 REVISED OF FAIRWAY HILLS P.R.D.

FORMERLY ALL OF LOT 5 OF SANDSTONE RIDGE SUBDIVISION AND ALL OF LOT 26-R1 OF FAIRWAY HILLS P.R.D. LOCATED IN THE SE1/4 NW1/4 OF SECTION 15, T1N, R7E, BHM, RAPID CITY, PENNINGTON COUNTY, SOUTH DAKOTA

00PL108



- = Found 1019 Cap
- = Found Rebar, or as shown
- ⊙ = Set/round Rebar with 1771 Cap



PREPARED BY:  
Fisk Engineering, Inc.  
P.O. Box 8154  
Rapid City, SD 57709

Utility Easements - 10' on the interior side of all lot lines of Lot 5 Revised of Sandstone Ridge Subdivision.

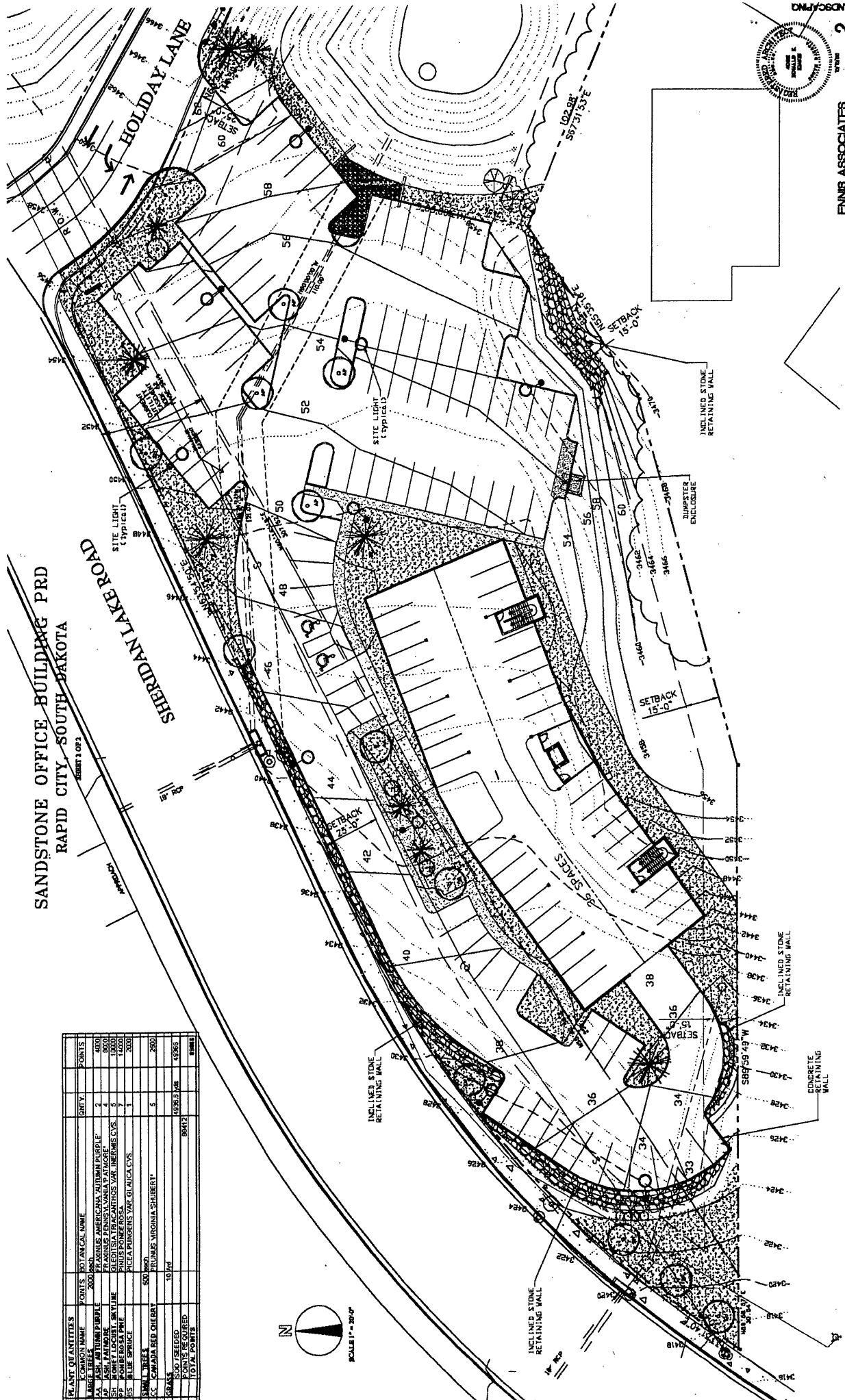
All major drainage easements shown hereon shall be kept free of all obstructions, including but not limited to buildings, walls, fences, hedges, trees and shrubs. These easements grant to all public authorizes the right to construct, operate, maintain, inspect and repair such improvements and structures as it deems expedient to facilitate drainage from any source.

FAIRWAY HILLS PRD

00PL108

SANDSTONE OFFICE BUILDING PRD  
RAPID CITY, SOUTH DAKOTA

PLANT QUANTITIES	POINTS	SO/ANICAL NAME	QTY	POINTS
1. LARGE TREE	2000	QUERCUS ALBA	1	4000
2. MEDIUM TREE	1000	FRAXINUS AMERICANA	4	4000
3. SMALL TREE	500	FRAXINUS PENNSYLVANICA	4	2000
4. SHrub	1000	FRAXINUS PENNSYLVANICA	4	2000
5. BLOOMING SHRUB	1000	FRAXINUS PENNSYLVANICA	4	2000
6. SHRUB	1000	FRAXINUS PENNSYLVANICA	4	2000
7. PERENNIAL	1000	FRAXINUS PENNSYLVANICA	4	2000
8. ANNUAL	1000	FRAXINUS PENNSYLVANICA	4	2000
9. GRASS	1000	FRAXINUS PENNSYLVANICA	4	2000
10. TOTAL POINTS				

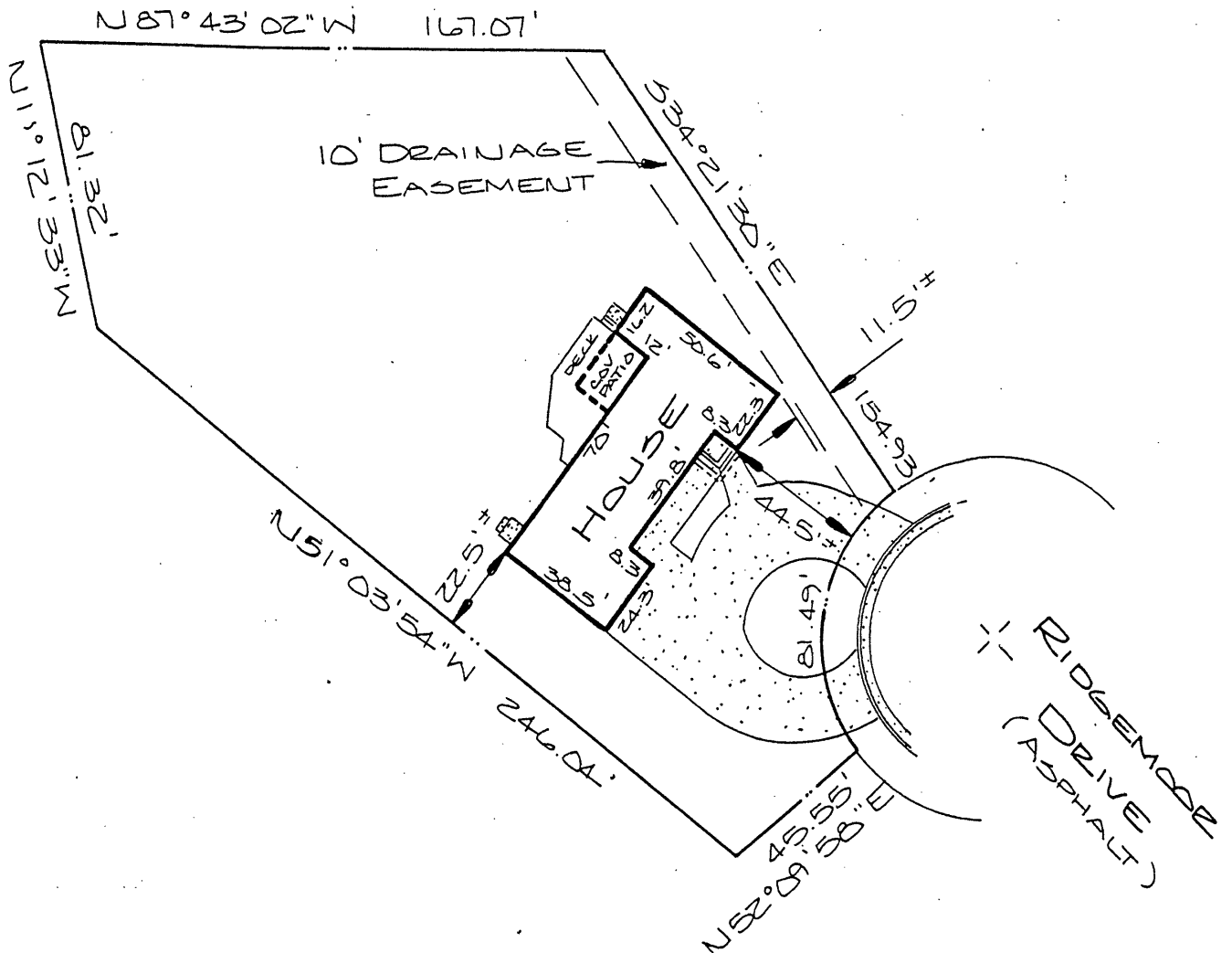
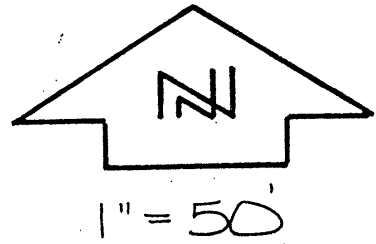


LANDSCAPING  
2  
ENR ASSOCIATES  
1000 N. UNIVERSITY ST. SUITE 200  
RAPID CITY, SD 57701  
ARCHITECTURE AND PLANNING 605-343-2867 FAX 605-343-2868

STRUCTURE LOCATION DRAWING

00PL108

NOTE: Minor details may not be shown due to drawing scale.



LEGAL: Lot 26R-1 of Fairway Hills P.R.D.

Rapid City, South Dakota

CLIENT: Buckingham - 3815 Ridgemoor Drive

Coldwell Banker - Pennington Title