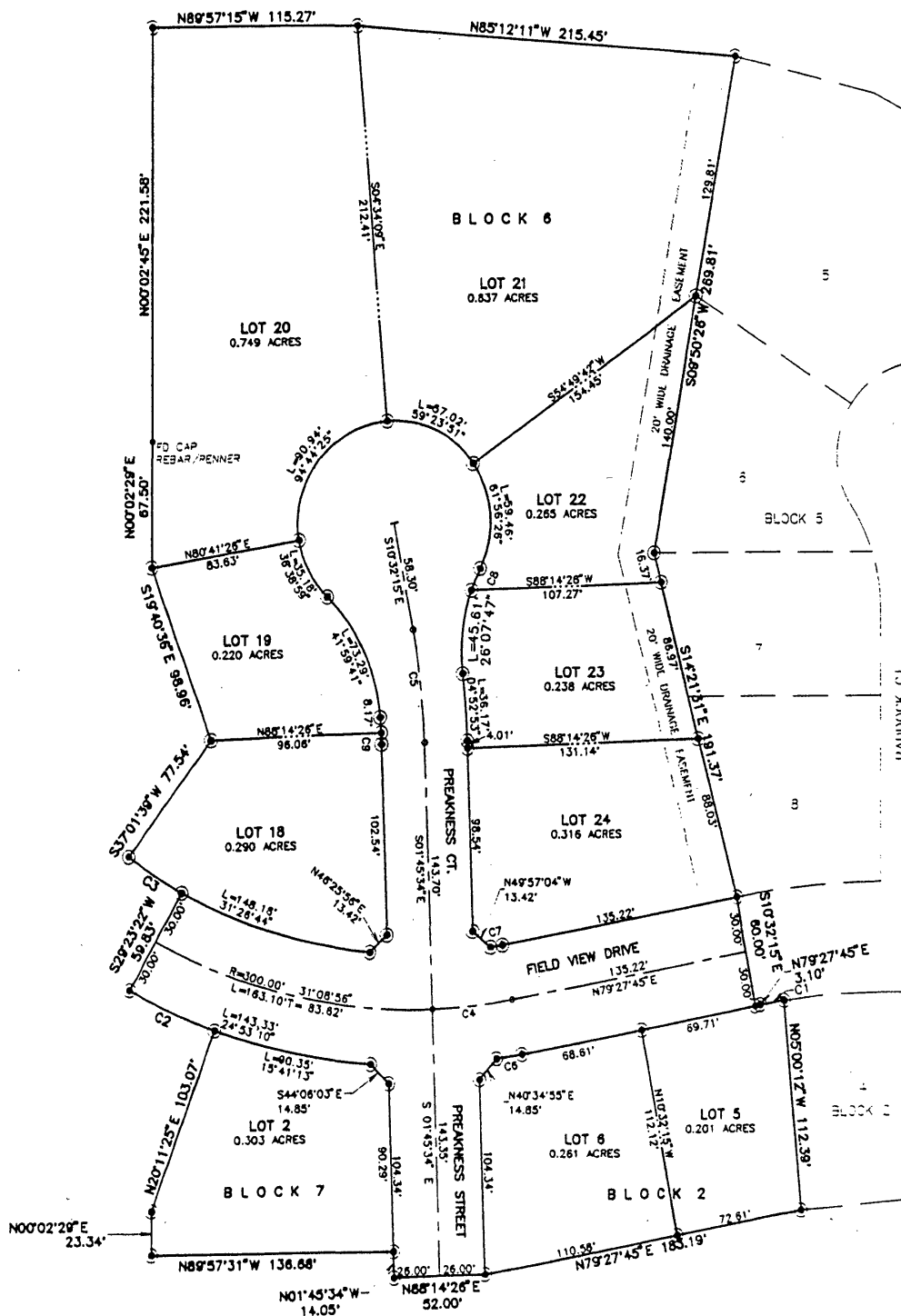


PRELIMINARY PLAT OF
 LOTS 5 & 6, BLOCK 2 AND LOTS 18 THRU 24, BLOCK 6
 AND LOT 2, BLOCK 7 OF THE MEADOWS SUBDIVISION
 LOCATED IN A PORTION OF SECTION 18, T1N, R8E, B1M,
 RAPID CITY, PENNINGTON COUNTY, SOUTH DAKOTA.

Prepared by:
 Dream Design International, Inc.
 343 Quincy Street Suite 104
 Rapid City, SD 57701
 605/348-0538

00PL081

CURVE TABLE				
CURVE	RADIUS	DELTA	LENGTH	TANGENT
C1	373.78'	02°08'24"	13.74'	6.87'
C2	330.00'	09°11'37"	52.98'	28.95'
C3	270.00'	07°38'17"	35.99'	18.02'
C4	300.00'	08°48'41"	45.96'	23.03'
C5	400.00'	08°48'41"	61.28'	30.70'
C6	330.00'	07°30'55"	14.49'	7.24'
C7	270.00'	01°28'13"	6.77'	3.39'
C8	100.00'	07°18'48"	12.71'	6.36'
C9	375.50'	00°57'31"	6.28'	3.14'



NOTE:
 A 10' WIDE UTILITY AND DRAINAGE
 EASEMENT IS ALONG ALL INTERIOR LOT LINES

TOTAL ACREAGE OF
 RIGHT OF WAY = 1.044 ACRES
 TOTAL PLATTED ACREAGE = 4.725 ACRES