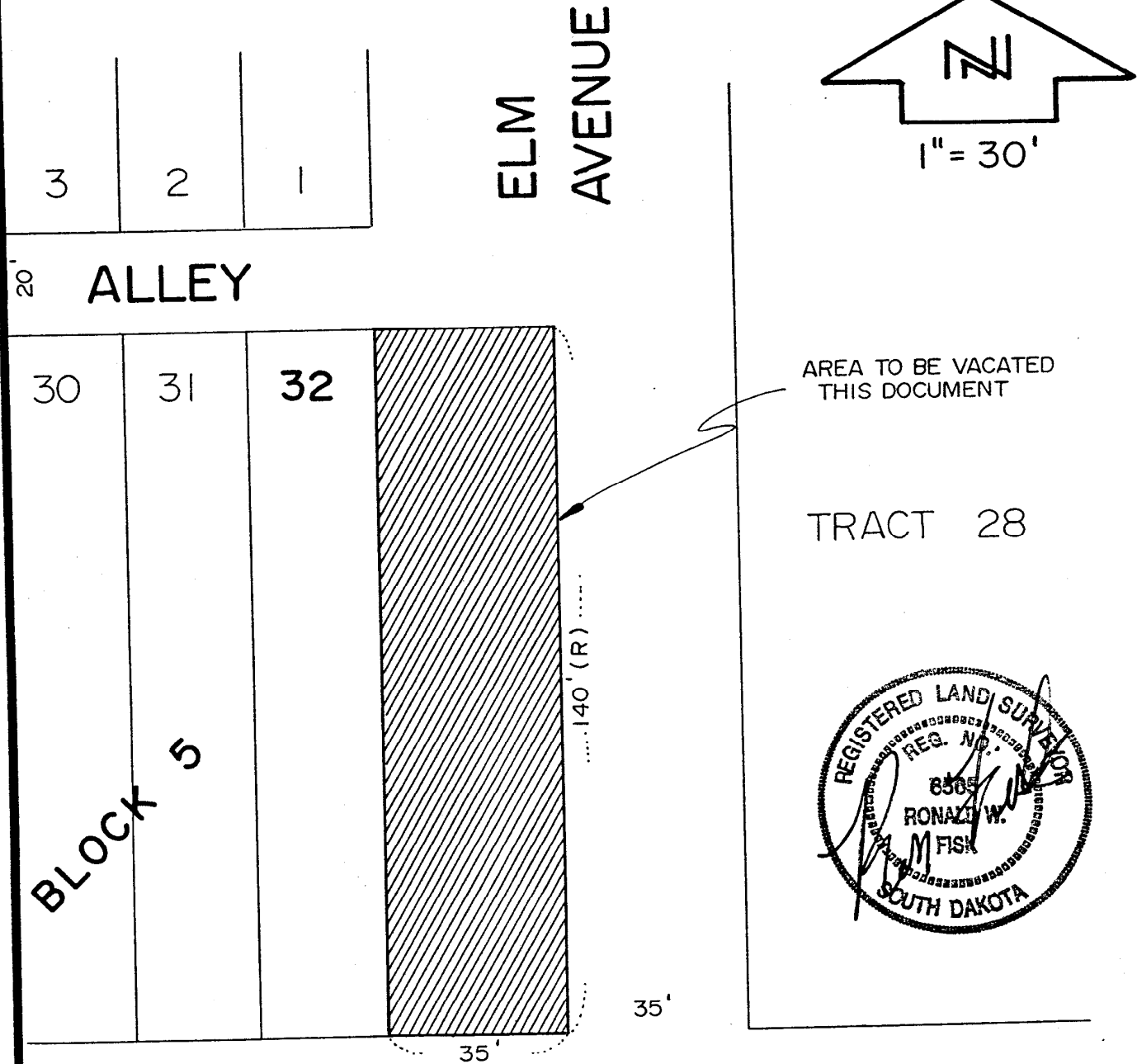


EXHIBIT A

VACATION OF THE UNDEVELOPED WEST 1/2 OF ELM AVENUE
ADJOINING LOT 32 IN BLOCK 5 OF SIMMONS' ADDITION,
RAPID CITY, PENNINGTON COUNTY, SOUTH DAKOTA



RAPID STREET/DM&E RAILROAD R.O.W.