

SEP 07 2000

Rapid City
Planning Department

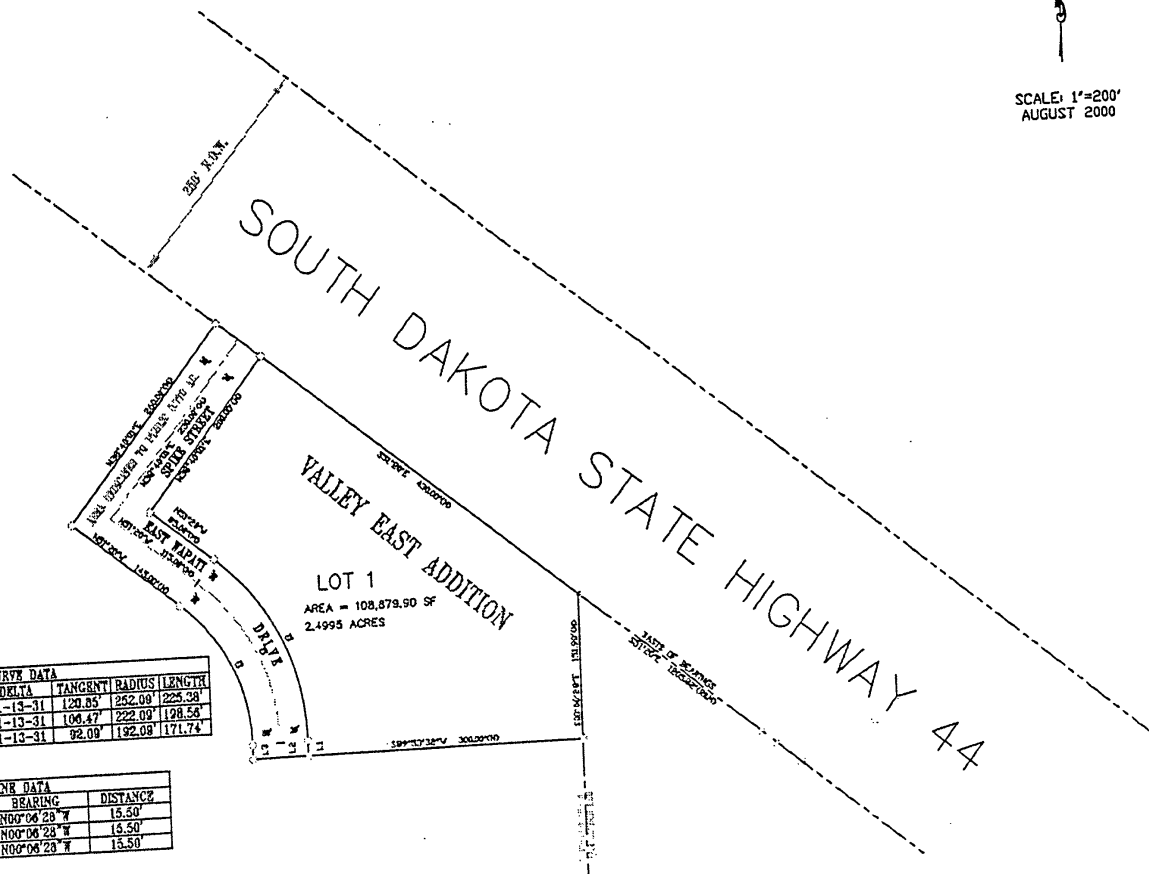
00PL094

PLAT OF

LOT 1 OF THE VALLEY EAST ADDITION
(FORMERLY S1/2 SW1/4 NE 1/4 LESS LOT H2 & LESS R.O.W.)
ALL LOCATED IN NE1/4 OF SECTION 9, T1N, R8E, B.H.M.,
RAPID CITY, PENNINGTON COUNTY, SOUTH DAKOTA.



SCALE: 1"=200'
AUGUST 2000



CURVE DATA			
CURVE	DELTA	TANGENT	RADIUS/LENGTH
C1	51-13-31	120.85	252.09 / 225.39
C2	51-13-31	106.47	222.09 / 128.58
C3	51-13-31	92.09	192.09 / 117.74

LINE DATA		
LINE	BEARING	DISTANCE
L1	N00°06'23" W	15.50'
L2	N00°06'23" W	15.50'
L3	N00°06'23" W	15.50'

LEGEND:

- FOUND REBAR & CAP
- FOUND 5/8" REBAR
- PIN SET THIS SURVEY
5/8" REBAR & ALUMINUM CAP
CITY OF RAPID CITY RLS 4484
- (M) MEASURED THIS SURVEY
- (R) RECORDED IN PREVIOUS
PLAT OR DESCRIPTION

DRAWING PREPARED BY THE
CITY OF RAPID CITY ENGINEERING
DIVISION, PUBLIC WORKS DEPARTMENT.
DRAWN BY: MRP CHECKED BY: LVC
DATE: AUGUST 1, 2000