

PLAT OF LOTS 31 THROUGH 38 IN BLOCK 2 AND LOTS 9 THROUGH 21 IN BLOCK 3 OF TERRACITA HIGHLIGHTS SUBDIVISION AND DEDICATED RIGHT-OF-WAY

LOCATED IN THE S1/2 NE1/4 OF SECTION 14, T1N, R7E, BHM, RAPID CITY, PENNINGTON COUNTY, SOUTH DAKOTA
PAGE 1 OF 2

00PL092

1 major drainage easements shown hereon shall be kept free of all obstructions including but not limited to buildings, walls, trees, hedges, trees and shrubs. These easements grant all public authorities the right to construct, operate, maintain, inspect and repair such improvements and structures as it deems expedient to facilitate drainage from any source.

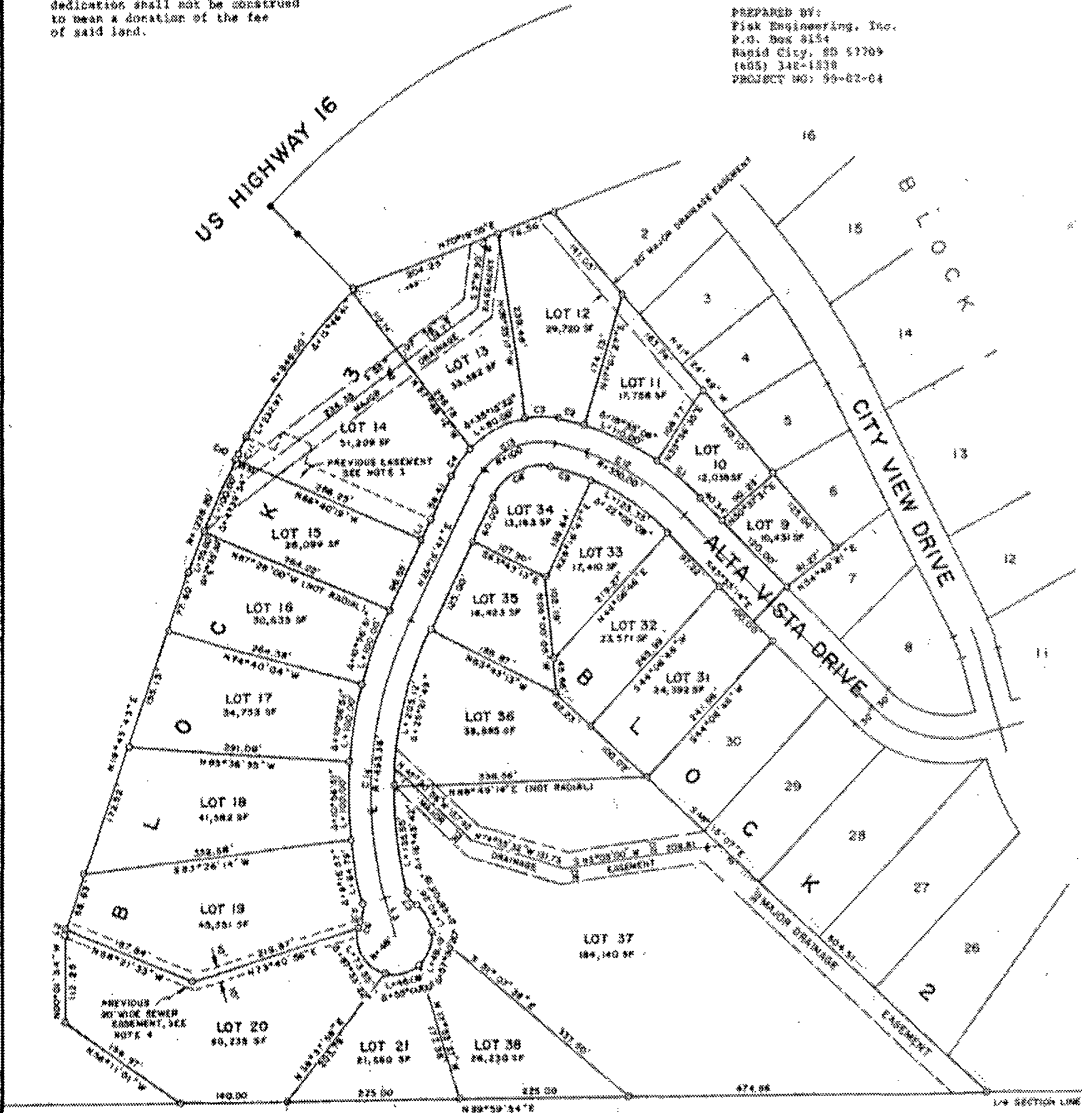
Alta Vista Drive, as shown hereon, contains 1.88 acres and is hereby dedicated as public right-of-way, however, such dedication shall not be construed to mean a donation of the fee of said land.



Dimensions shown are as measured this survey.

○ = Sex Bezar With 1771 Cap
● = Found Monument As Shown

PREPARED BY:
Pisk Engineering, Inc.
P.O. Box 8154
Rapid City, SD 57709
(605) 342-1838
PROJECT NO: 99-02-04



L1	N87°14'47" E	30.04'
L2	N10°42'43" E	1.63'
L3	N1°50'43" W	18.84'

	B	C	D
C1	360.00'	83.66'	10°30'11"
C2	360.00'	33.27'	5°01'00"
C3	135.00'	46.73'	20°35'44"
C4	135.00'	45.59'	18°52'24"
C5	30.00'	20.79'	39°42'55"
C6	48.00'	9.48'	11°18'20"
C7	30.00'	20.79'	39°42'55"
C8	20.00'	32.52'	75°43'40"
C9	320.00'	53.93'	10°01'10"
C10	1278.20'	3.04'	0°14'08"
C11	848.00'	23.08'	1°41'49"
C12	330.00'	114.12'	12°06'19"
C13	100.00'	132.17'	72°43'40"
C14	423.38'	382.73'	42°02'30"

EASEMENT NOTES:

1. Previous Permanent Access and utility Easements as filed (Book 57, Pages 2382 - 2391 and Book 54, pages 9418 - 9422) remain in effect except where Alta Vista Drive, as dedicated on this plat supercedes the previous alignment.
2. Previous Permanent Access and Utility Easement see exhibit, Book 54, Page 9422.
3. Previous Easement, see exhibit, Book 57, Page 2391.