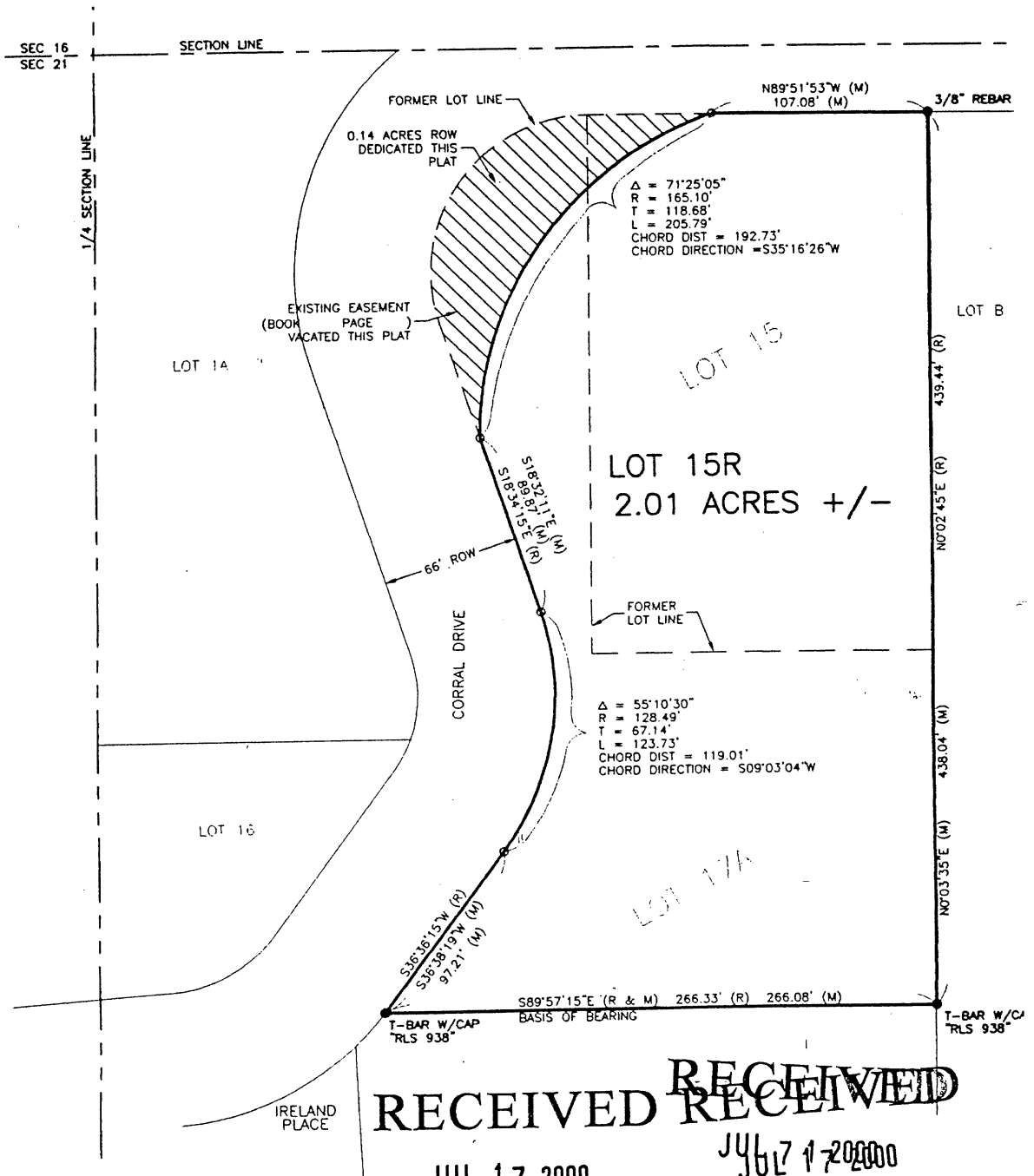


00PL075

PLAT OF LOT 15R

FORMERLY LOT 15 OF THE NW 1/4 OF THE NE 1/4 AND LOT 17A OF THE MIRACLE PINES SUBDIVISION OF THE NW 1/4 OF THE NE 1/4 OF SECTION 21, T 1 N, R 7 E, B.H.M. RAPID CITY, PENNINGTON COUNTY, SOUTH DAKOTA



50'

THIS SURVEY

R W/CAP STAMPED  
# 5680"

VEY

URVEY MONUMENT

TY AND DRAINAGE  
CH SIDE OF ALL  
REAR LOT LINES.

SDCL 11-3-8.1  
E DEVELOPER OF  
DESCRIBED WITHIN  
BE RESPONSIBLE  
ANY WATERS OF  
DING

LOCATED ADJACENT  
CH PLATTED AREA  
FROM SEWAGE  
VISION AND  
UTION OF SUCH  
FORM TO AND  
ILATIONS OF THE  
PARTMENT OF  
NATURAL  
ING TO THE SAME.

**RECEIVED RECEIVED**

JUL 17 2000

JUL 17 2000

Rapid City Planning Department

Rapid City Planning Department

**CERTIFICATE OF DIRECTOR OF EQUALIZATION**

I, DIRECTOR OF EQUALIZATION, PENNINGTON COUNTY, DO HEREBY CERTIFY THAT I HAVE RECORD IN MY OFFICE A COPY OF THE WITHIN DESCRIBED PLAT.