

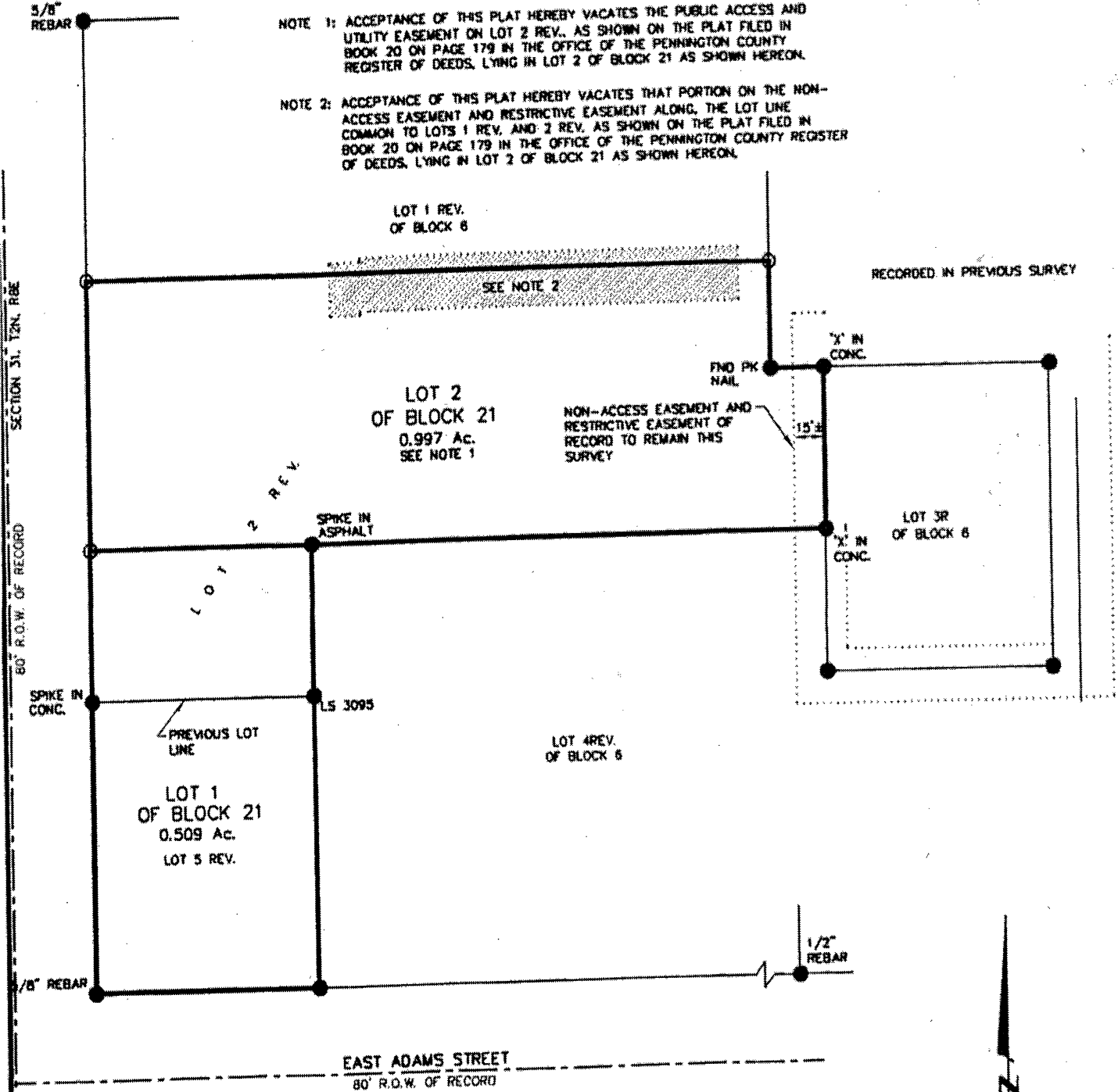
00PL093

LAYOUT PLAT OF LOTS 1 AND 2 OF BLOCK 21 WISE'S ADDITION

(formerly Lot 2 Rev. and Lot 5 Rev., of Block 6 Wise's Addition)
LOCATED IN THE SW1/4 OF THE NW1/4
SECTION 31, T2N, R8E, BHM
RAPID CITY, PENNINGTON COUNTY, SOUTH DAKOTA

NOTE 1: ACCEPTANCE OF THIS PLAT HEREBY VACATES THE PUBLIC ACCESS AND UTILITY EASEMENT ON LOT 2 REV., AS SHOWN ON THE PLAT FILED IN BOOK 20 ON PAGE 179 IN THE OFFICE OF THE PENNINGTON COUNTY REGISTER OF DEEDS, LYING IN LOT 2 OF BLOCK 21 AS SHOWN HEREON.

NOTE 2: ACCEPTANCE OF THIS PLAT HEREBY VACATES THAT PORTION ON THE NON-ACCESS EASEMENT AND RESTRICTIVE EASEMENT ALONG THE LOT LINE COMMON TO LOTS 1 REV. AND 2 REV. AS SHOWN ON THE PLAT FILED IN BOOK 20 ON PAGE 179 IN THE OFFICE OF THE PENNINGTON COUNTY REGISTER OF DEEDS, LYING IN LOT 2 OF BLOCK 21 AS SHOWN HEREON.



RECORDED IN PREVIOUS SURVEY



AUGUST 25, 2000
N.T.S.



Renner & Sperlich Engineering Co.

616 Sixth St. • Rapid City, SD 57701 • 605/342-1191
FAX: 605/342-1405 • E-MAIL: RSEC@RAPIDNET.COM