
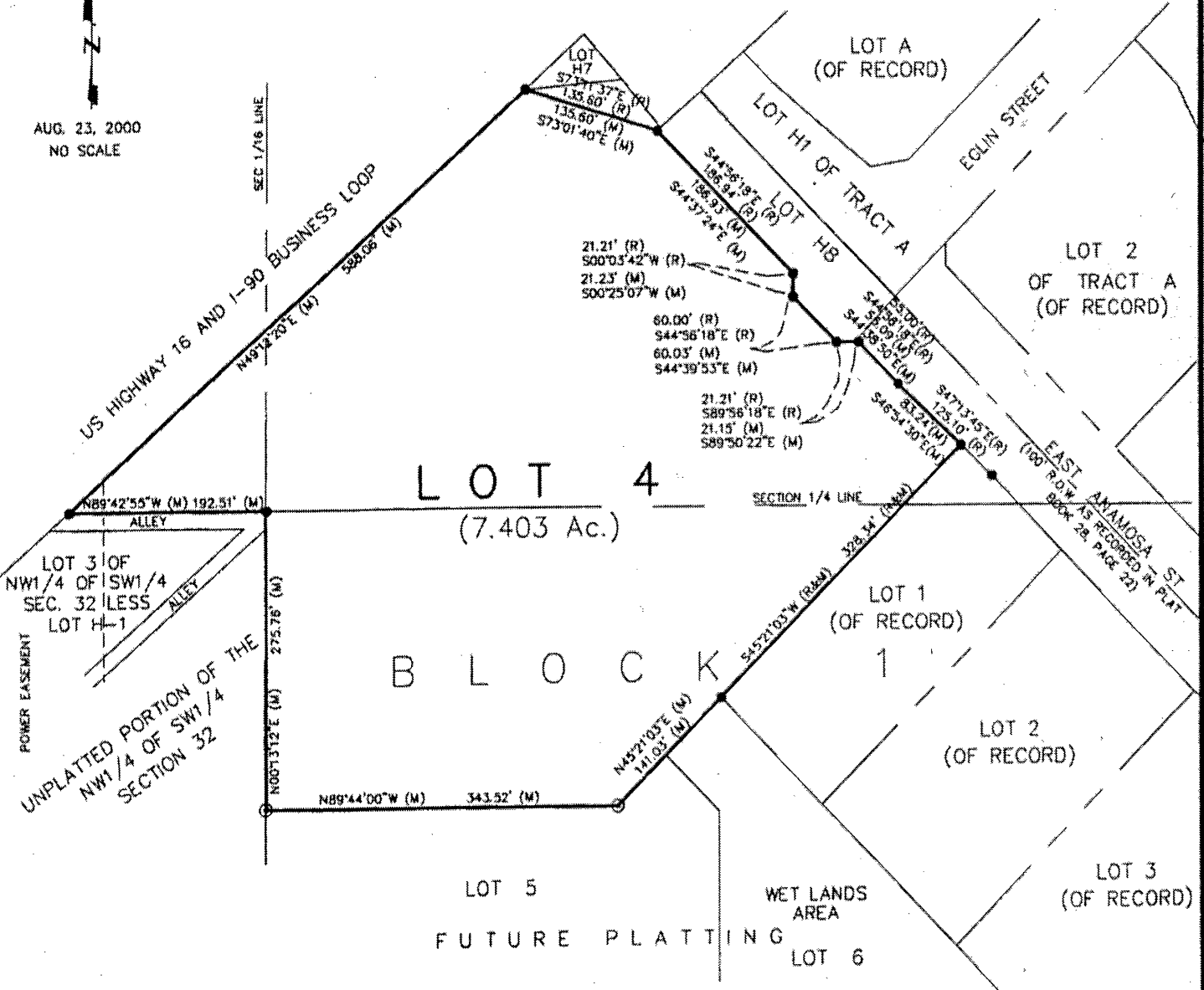


00PL090

PLAT OF LOT 4 OF BLOCK 1 MENARD SUBDIVISION

(formerly a portion of the unplatted balance of the SE1/4 of the NW1/4 and a portion of the unplatted balance of the NE1/4 of the SW1/4 all in Section 32)
LOCATED IN THE SE1/4 OF THE NW1/4 AND THE NE1/4 OF THE SW1/4
SECTION 32, T2N, R8E, BHM
RAPID CITY, PENNINGTON COUNTY, SOUTH DAKOTA


AUG. 23, 2000
NO SCALE

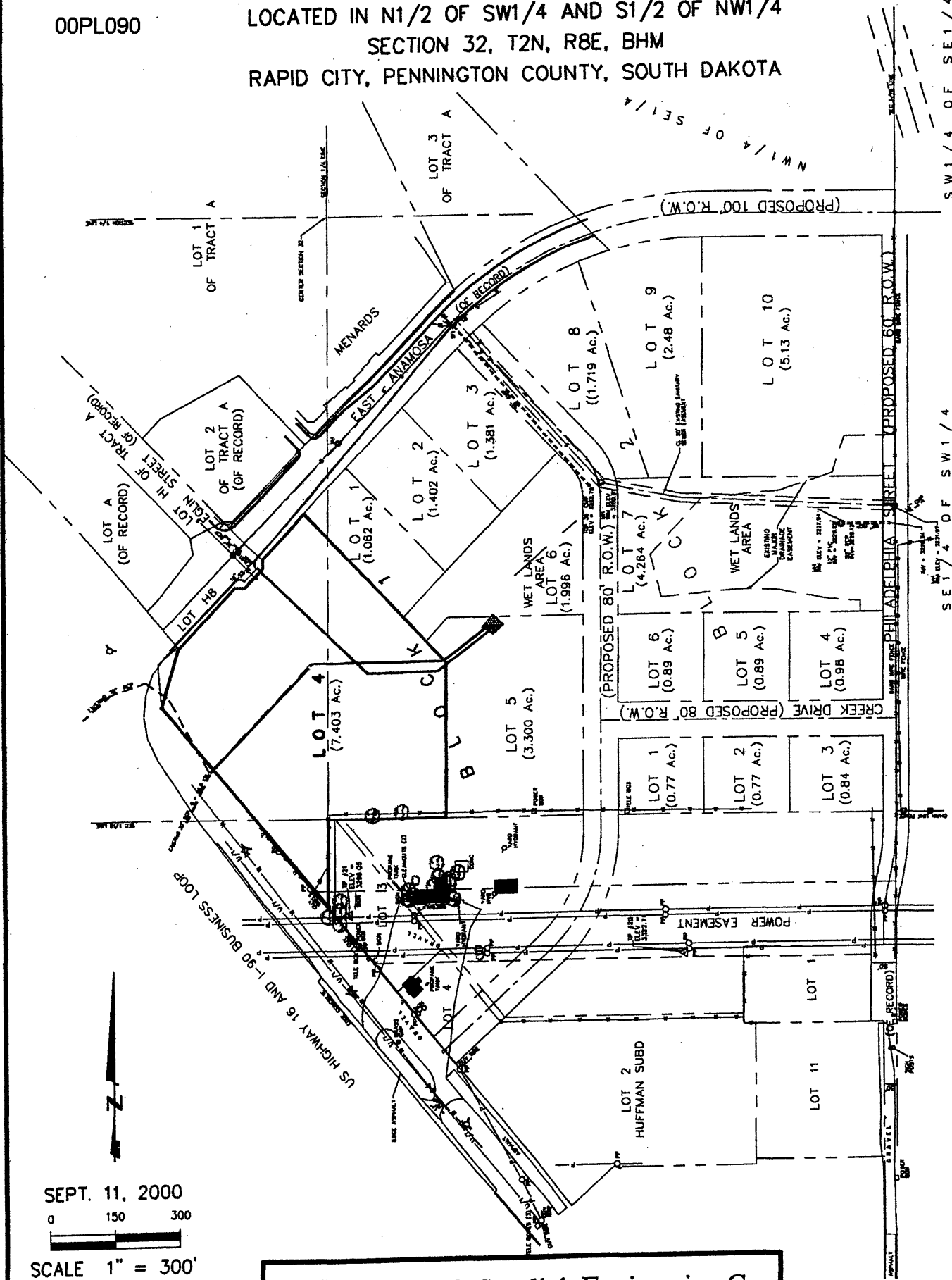


 **Renner & Sperlich Engineering Co.**
 616 SIXTH ST. • RAPID CITY, SD 57701 • 605/342-1191
 FAX: 605/342-1405 • E-MAIL: X19FIAT@AOL.COM

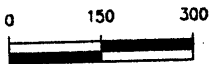
LOT 4 OF BLOCK 1 OF MENARD SUBDIVISION

00PL090


LOCATED IN N1/2 OF SW1/4 AND S1/2 OF NW1/4
SECTION 32, T2N, R8E, BHM
RAPID CITY, PENNINGTON COUNTY, SOUTH DAKOTA



SEPT. 11, 2000



SCALE 1" = 300'



Renner & Sperlich Engineering Co.
616 SIXTH ST. • RAPID CITY, SD 57701 • 605/342-1191
FAX: 605/342-1405 • E-MAIL: X19FIAT@AOL.COM