

PLAT OF LOTS 1 AND 2 OF KUNZE SUBDIVISION

LOCATED IN (AND FORMERLY ALL OF) LOT G OF LOT 2 OF THE SE1/4 SW1/4 OF SECTION 5, T1N, R8E, BHM, RAPID CITY, PENNINGTON COUNTY, SOUTH DAKOTA

PREPARED BY:
 FISK ENGINEERING, INC.
 P.O. BOX 8154
 RAPID CITY, SD 57709
 (605) 348-1538
 June 16, 2000

00P1080



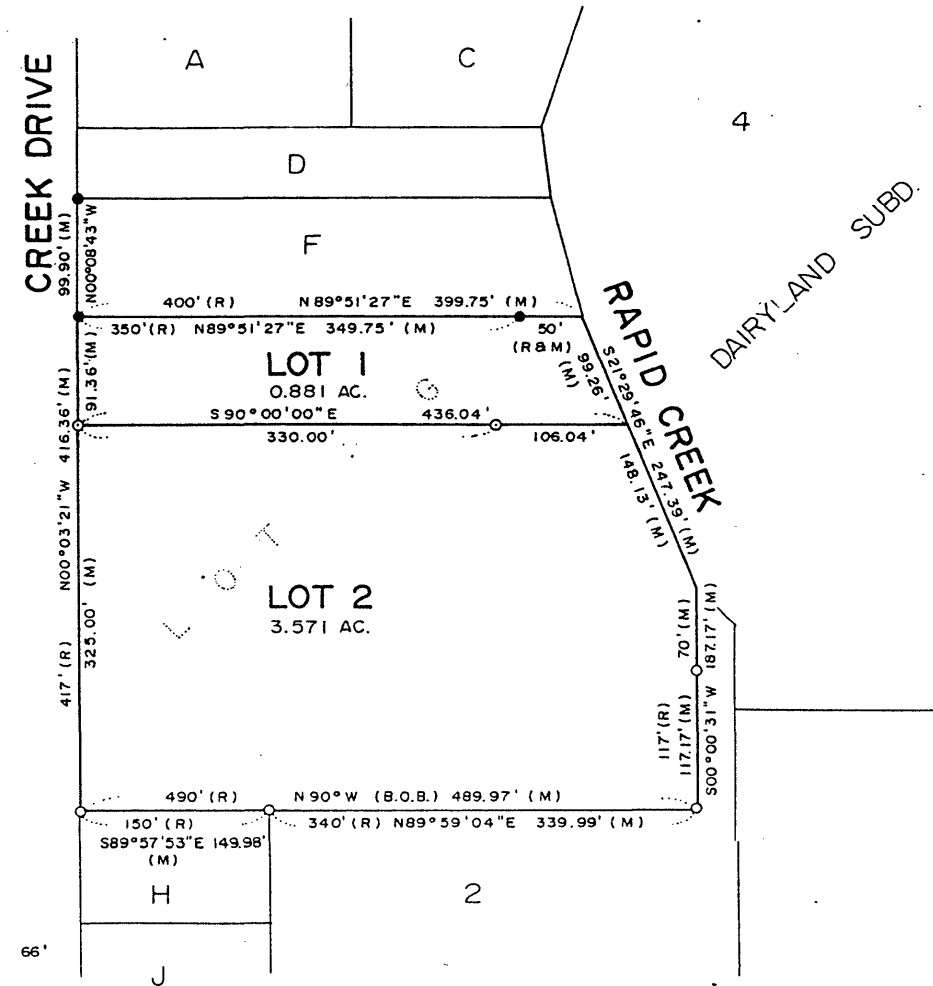
1"=100'

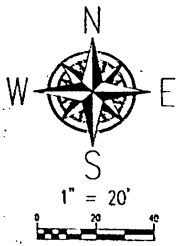
- (P) = Previously Recorded
- (M) = Measured This Survey
- = Found Pipe
- = Found Rebar
- ⊙ = Set Rebar With 1771 Cap

NOTE: Portions of these lots are within areas of Floodway and Special Flood Hazard Refer to FIRM Map 465420 0008 F Map Revised May 16, 1996 for specific information.

E. ST. CHARLES 60'

All major drainage easements shown hereon shall be kept free of all obstructions, including but not limited to buildings, walls, fences, hedges, trees and shrubs. These easements grant to all public authorities the right to construct, operate, maintain, inspect and repair such improvements and structures as it deems expedient to facilitate drainage from any source.





CREEK DRIVE
ASPHALT

OWNER: JOHN AND ELAINE KUNZE
N89°51'27"E

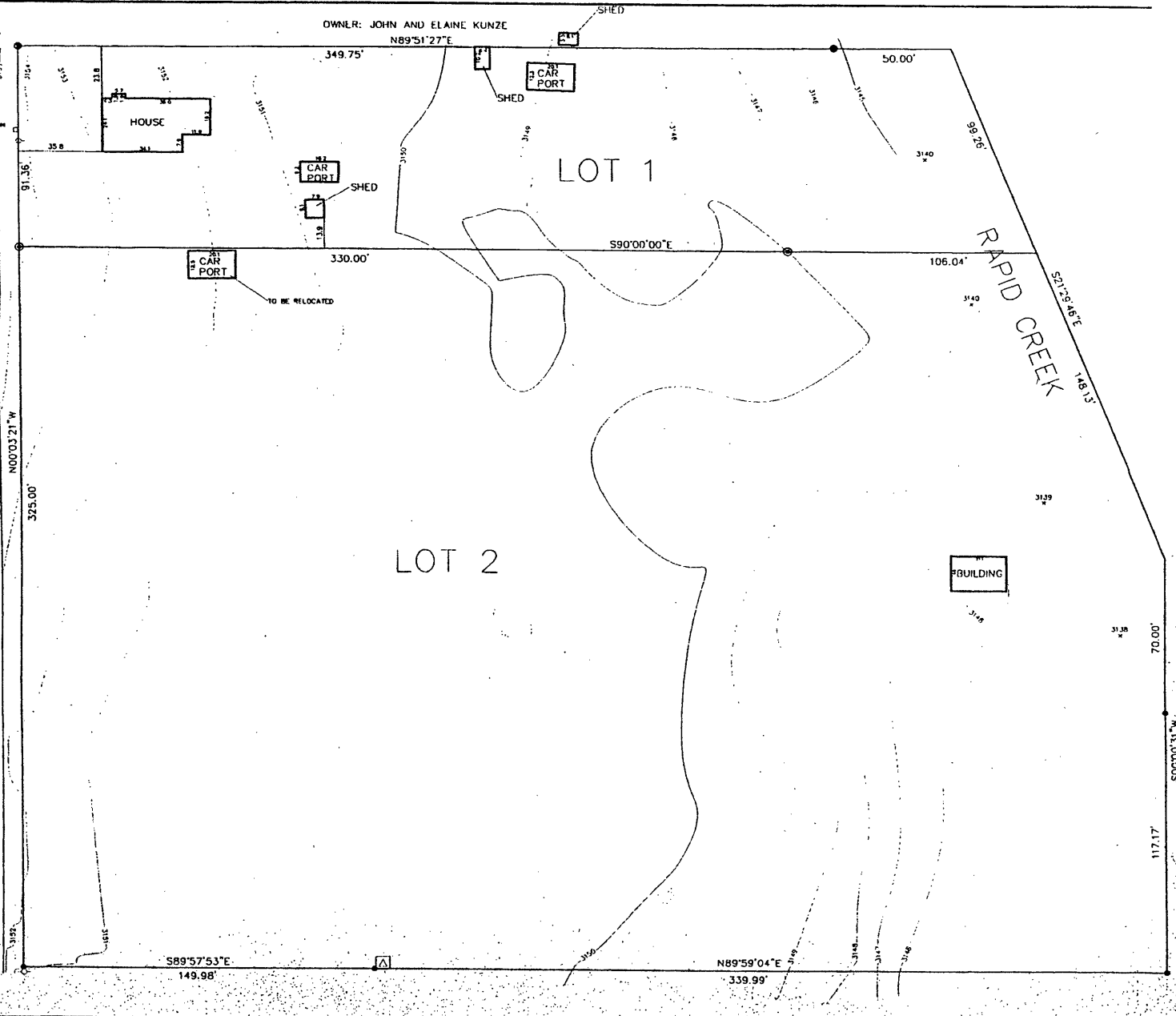
LOT 1

LOT 2

RAPID CREEK

- PIPE
- 5/8" REBAR
- ⊙ SET LS-1771
- ⊖ POWER POLE
- TELEPHONE RISER
- WATER BOX
- △ ELECTRICAL TRANSFORMER

SANITARY SEWER
MANHOLE



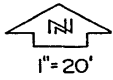
00P L080

TOPOGRAPHIC MAP
LOTS 1 AND 2, KUNZE SUBDIVISION
RAPID CITY, SOUTH DAKOTA

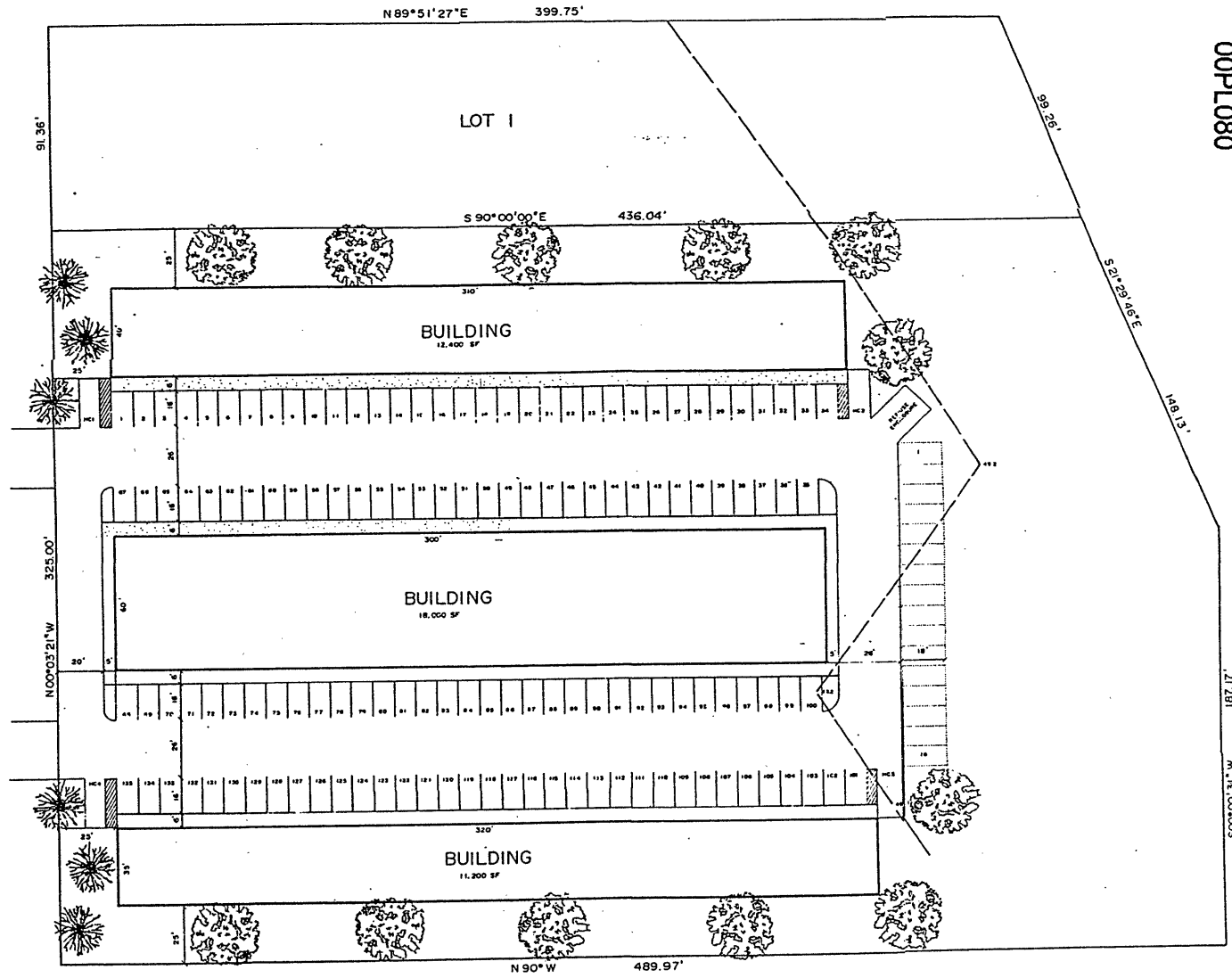
PREPARED BY: FISA ENGINEERING, INC.
 1033 WARD STREET, P.O. BOX 2154
 RAPID CITY, SOUTH DAKOTA 57505
 (605) 348-1438 FAX (605) 341-1112
 WWW.FISAENGINEERING.COM

SITE PLAN

LOT 2 OF KUNZE
SUBDIVISION



CREEK DRIVE



00P1080

1/17/81 A. J. C. 00-005