

99UR013

Portion of Marshall Heights Tract in Rapid City, including  
Marshall Heights Tract located in lot 1, 237, of NW1/4 of  
Section 29, T2N, R8E, BHM, Rapid City, Washington County, South Dakota.

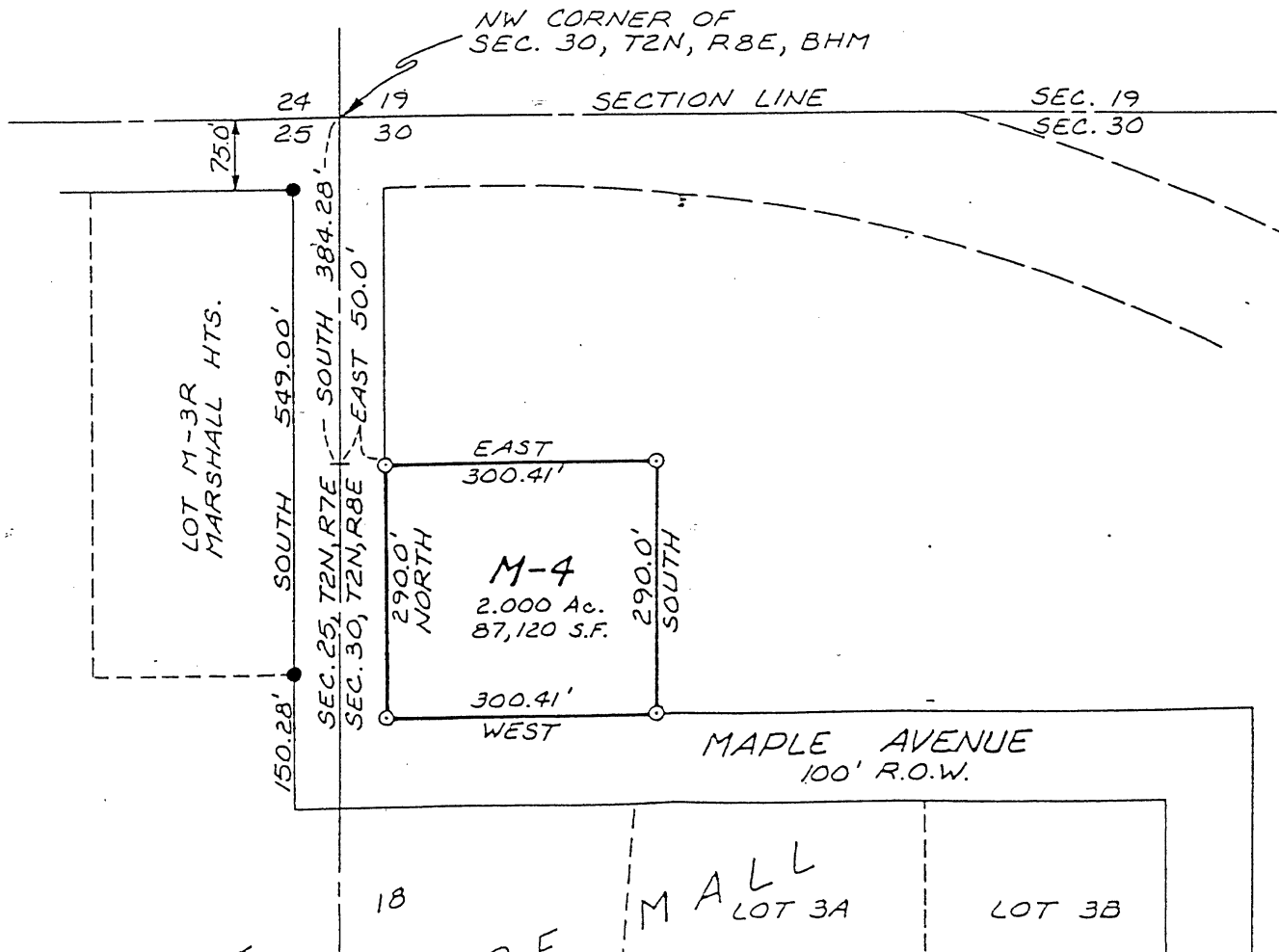
NOTES:

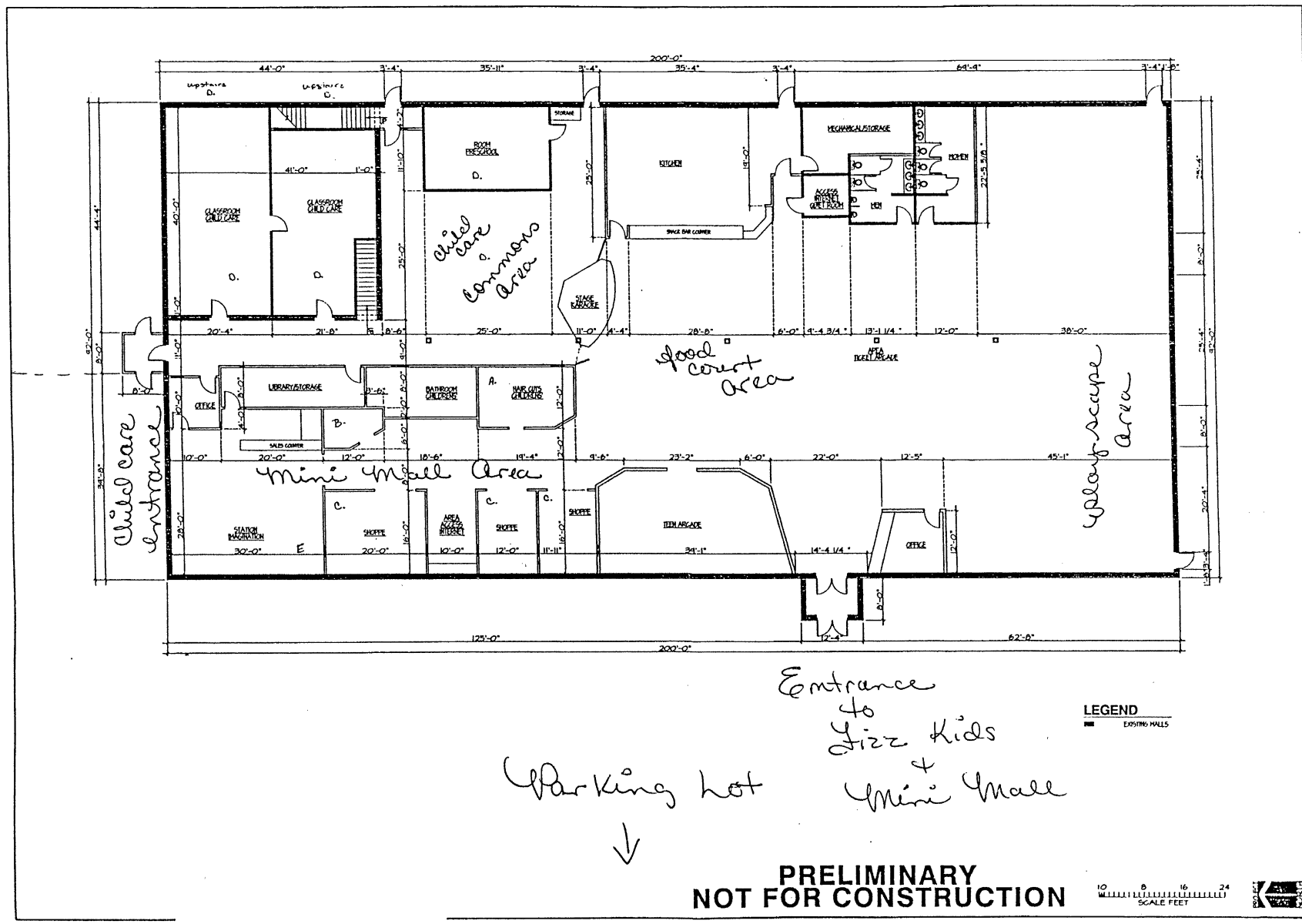
- Denotes set 5/8" rebar with survey cap marked "EHS Engineering 1019".
- Denotes Found Survey Monument (5/8" rebar with survey cap marked "Francis-Neador 1019" unless otherwise noted).

Utility and Minor Drainage Easements: 8' on the interior sides of all side and rear lot lines.

All buildings shall be set back a minimum of 25 feet from the street property lines.

All major drainage easements shown hereon shall be kept free of all obstructions including but not limited to buildings, walls, fences, hedges, trees, and shrubs. These easements grant to all public authorities the right to construct, operate, maintain, inspect, and repair such improvements and structures as it deems expedient to facilitate drainage from any source.





© 1999 Overhead of documents  
 This document and the data and drawings  
 incorporated herein are the property of  
 Hengel Associates, P.C. and are not to be used  
 in whole or in part for any other project  
 without the written consent of Hengel  
 Associates, P.C.

**HENGEL ASSOCIATES, P.C.**  
**ARCHITECTS - ENGINEERS**  
 1628 N. 75th St. Rapid City, SD 57701

**FIZZ KIDS**  
**RAPID CITY, SOUTH DAKOTA**  
**FLOOR PLAN**

DESIGNED BY:	REVIEWED
DRAWN BY:	SCM
CHECKED BY:	
DATE:	4/7/99
PROJECT NO:	4111
SHEET NO:	

SHEET  
**A1.1**

**PRELIMINARY**  
**NOT FOR CONSTRUCTION**

**LEGEND**  
 ■ EXISTING WALLS

0 8 16 24  
 SCALE FEET