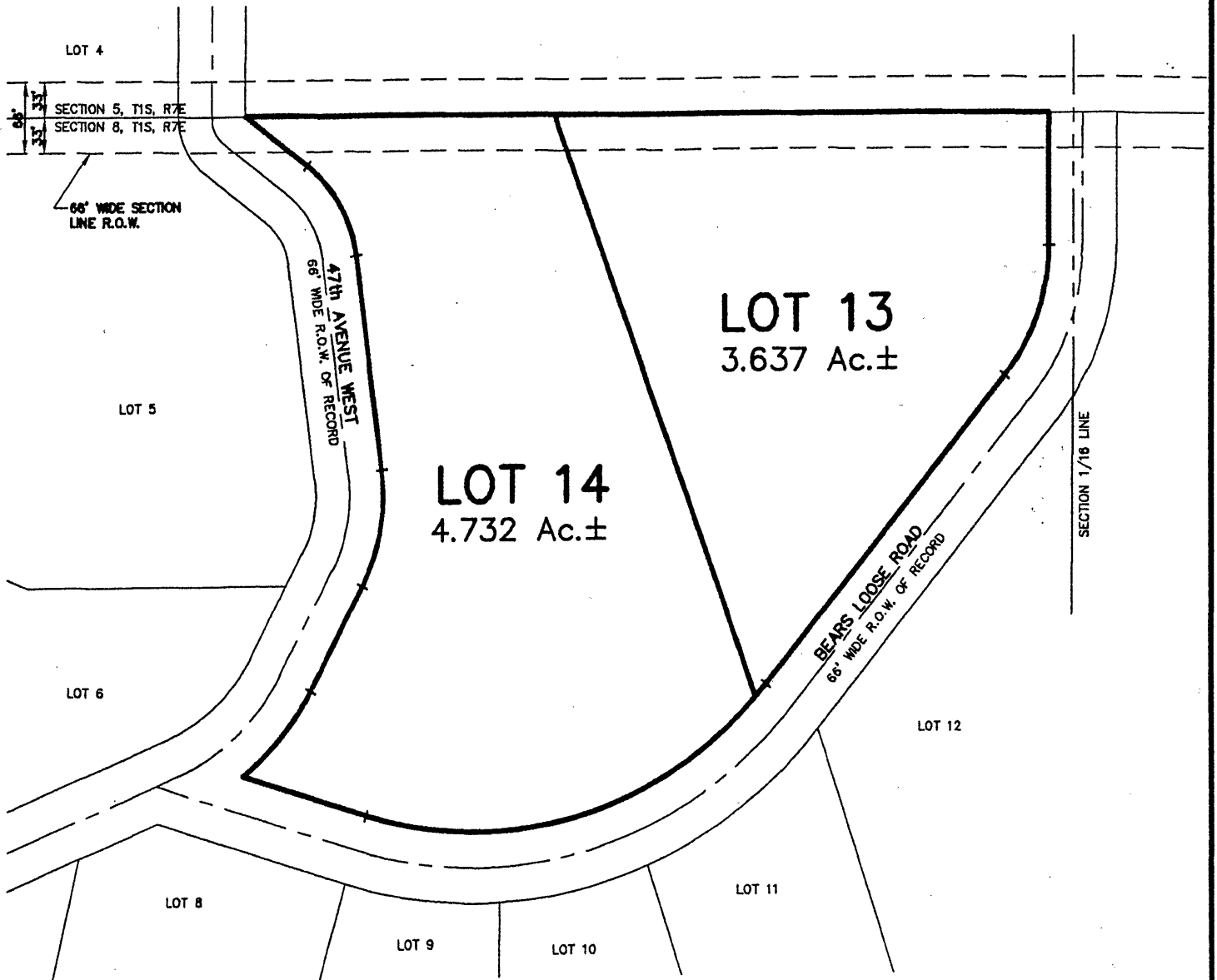


00SV017

PLAT OF
LOTS 13 AND 14
OF CANYON SHADOWS SUBDIVISION

(formerly the unplatted Balance of the NW1/4 of the NE1/4 of Section 8, T1S, R7E, BHM)
LOCATED IN THE NW1/4 OF THE NE1/4
SECTION 8, T1S, R7E, BHM
PENNINGTON COUNTY, SOUTH DAKOTA



PURSUANT TO SDCL 11-3-8.1 AND 11-3-8.2, THE DEVELOPER OF THE PROPERTY DESCRIBED WITHIN THIS PLAT SHALL BE RESPONSIBLE FOR PROTECTING ANY WATERS OF THE STATE, INCLUDING GROUNDWATER, LOCATED ADJACENT TO OR WITHIN SUCH PLATTED AREA FROM POLLUTION FROM SEWAGE FROM SUCH SUBDIVISION AND SHALL IN PROSECUTION OF SUCH PROTECTIONS CONFORM TO AND FOLLOW ALL REGULATIONS OF THE SOUTH DAKOTA DEPARTMENT OF ENVIRONMENT AND NATURAL RESOURCES RELATING TO THE SAME.

AUGUST 11, 2000



Renner & Sperlich Engineering Co.

616 Sixth St. * Rapid City, SD 57701 * 605/342-1191
FAX: 605/342-1405 * E-MAIL: X19FIAT@AOL.COM