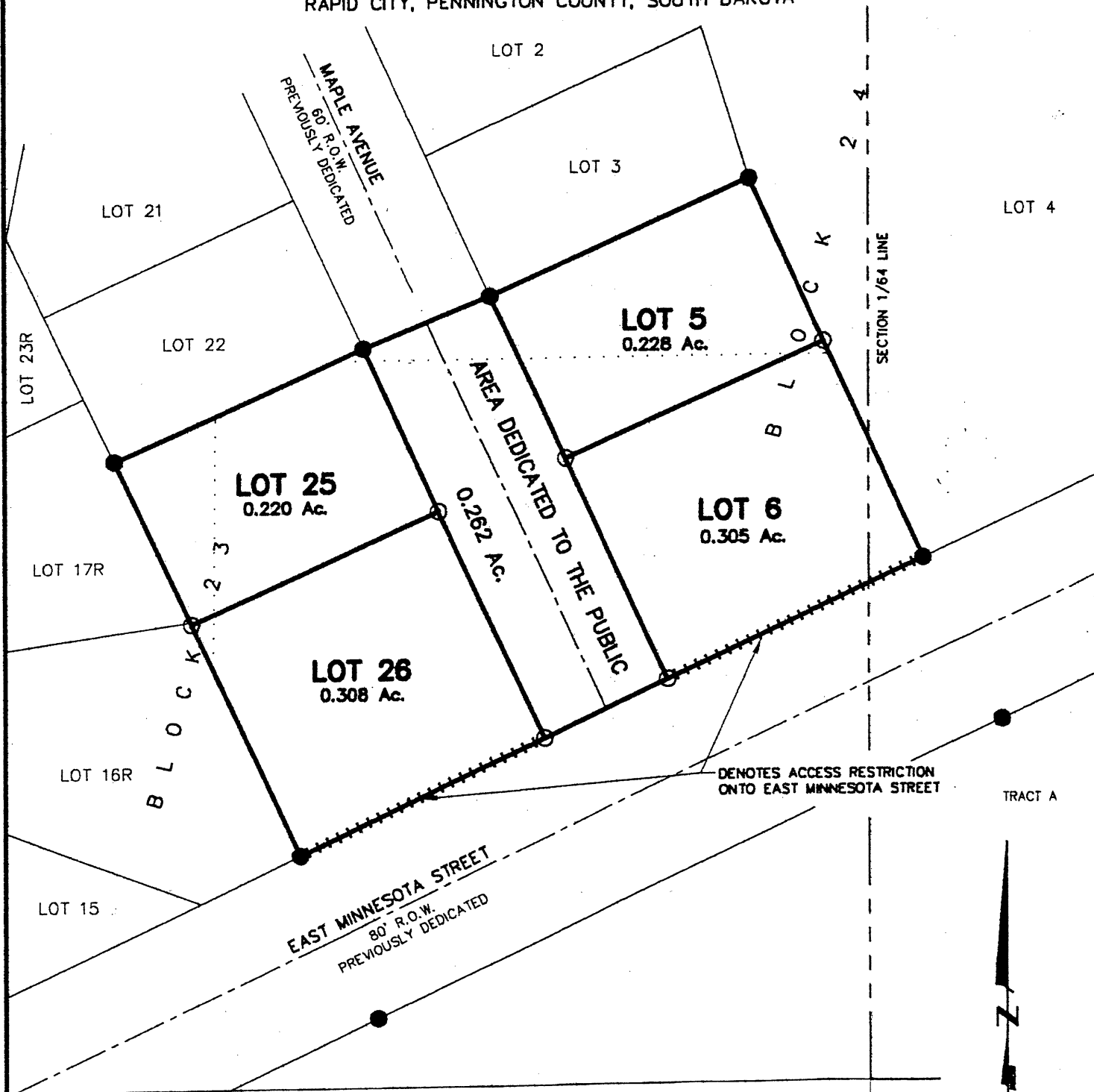


PLAT OF
**LOTS 25 AND 26 OF BLOCK 23 AND LOTS 5 AND 6 OF BLOCK 24
OF ROBBINSDALE ADDITION NO. 10**

00PL076

(formerly a portion of Tract A of Robbinsdale Addition No. 10 and
a portion of the NE1/4 of the SE1/4 of Section 13)

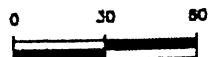
LOCATED IN THE NE1/4 OF THE SE1/4
SECTION 13, T1N, R7E, BHM
RAPID CITY, PENNINGTON COUNTY, SOUTH DAKOTA



TRACT B
Renner & Sperlich Engineering Co.

616 Sixth St. • Rapid City, SD 57701 • 605/342-1191
FAX: 605/342-1405 • E-MAIL: X19FIAT@AOL.COM

JULY 27, 2000



SCALE 1" = 60'