

PRELIMINARY  
NOT FOR  
CONSTRUCTION

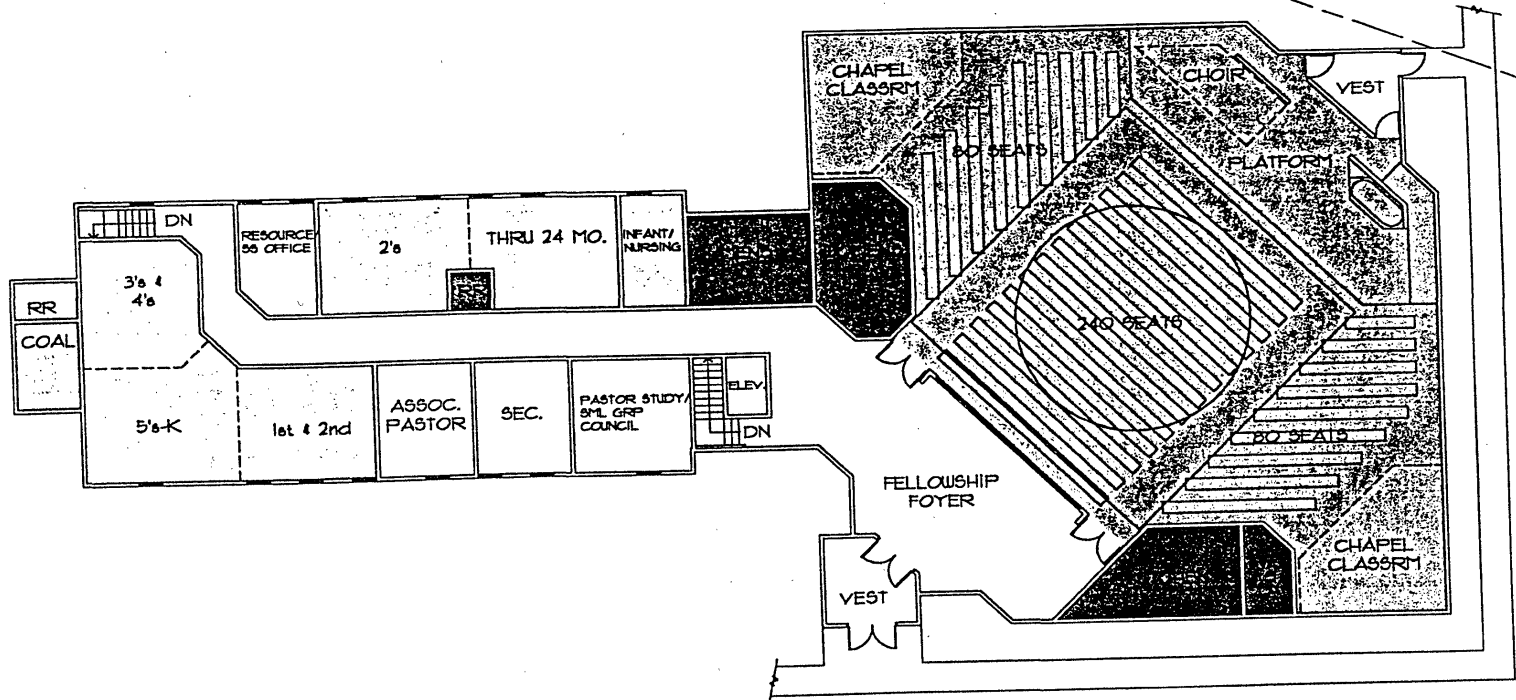
**ARC** Architectural  
www.arcarchitect.com  
004 Broadway, Suite 205  
Rapid City, South Dakota 57701-0014  
tel 605-341-2044 • fax 605-341-3601

WESTSIDE BAPTIST CHURCH  
RAPID CITY, SOUTH DAKOTA

DATE: 3/17/00  
DRAWN BY: 1999-005  
PROJECT: UPPER LEVEL

A1

BUILDING SETBACK LINE



**UPPER LEVEL REMODEL / ADDITION**  
A1 1/16"=1'-0"

RECEIVED  
AUG 04 2000  
Rapid City  
Planning Department

00PD040

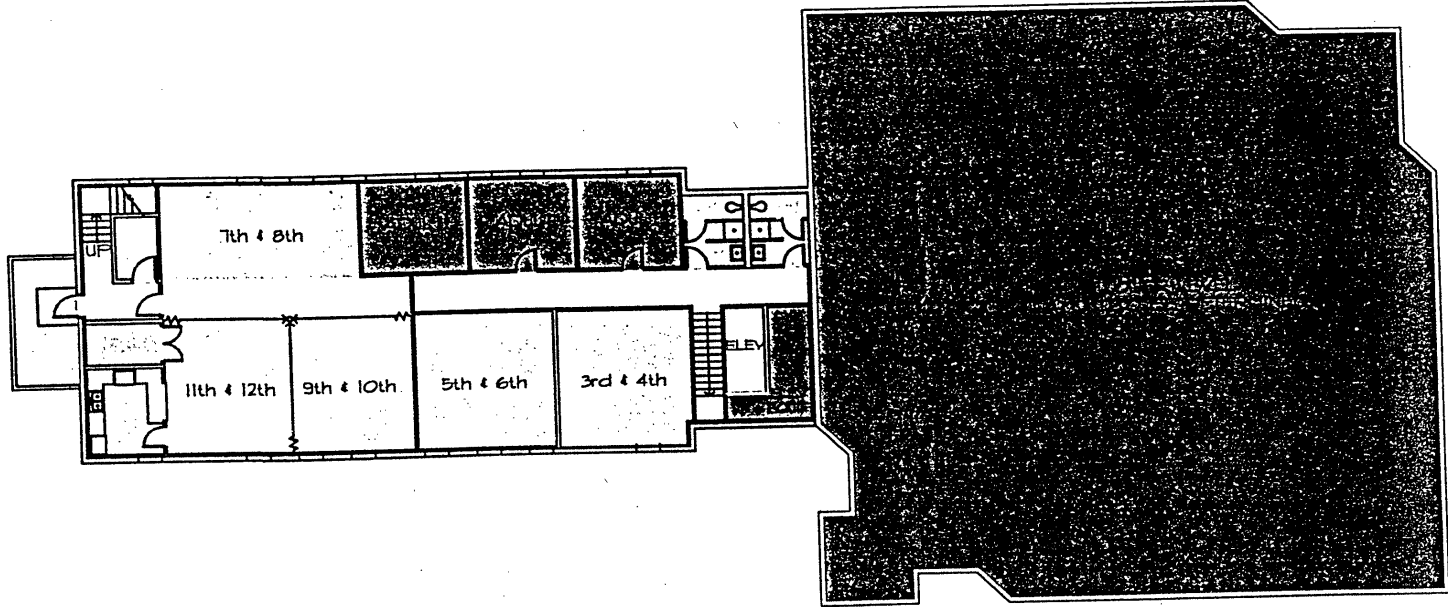
PRELIMINARY  
NOT FOR  
CONSTRUCTION

**ARC**  
INTERNATIONAL INC.  
www.arcinc.com  
404 South Street Suite 204  
Rapid City, South Dakota 57709-6014  
Tel: 605-341-1281

DATE: 8/17/00  
SCALE: AS SHOWN

WESTSIDE BAPTIST CHURCH  
RAPID CITY, SOUTH DAKOTA  
UPPER LEVEL

A2



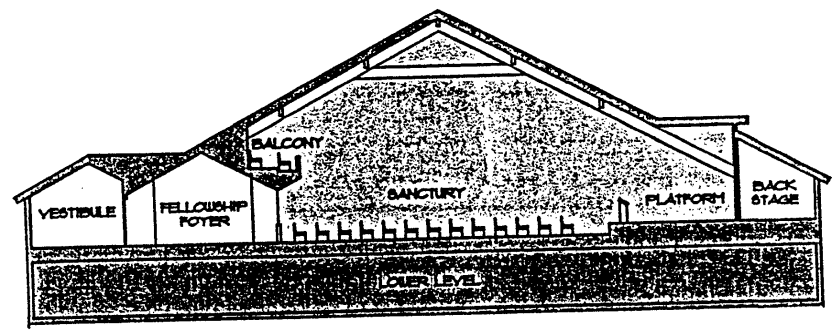
LOWER LEVEL REMODEL / ADDITION  
A2 1/16"=1'-0"

RECEIVED  
AUG 04 2000  
Rapid City  
Planning Department

00PD040

PRELIMINARY  
NOT FOR  
CONSTRUCTION

**ARC** International Inc.  
www.arcintl.com  
408 Research Street, Suite 200  
Rapid City, South Dakota 57704-4014  
Tel: 605-341-2264 Fax: 605-341-3463



**A3** BUILDING CROSS SECTION

DATE: 7/19/00  
DRAWN BY: 1599-003  
CHECKED BY: BA

WESTSIDE BAPTIST CHURCH  
RAPID CITY, SOUTH DAKOTA  
PROJECT: CHURCH SECTION

**A3**

RECEIVED  
AUG 04 2000  
Rapid City  
Planning Department

00PD040