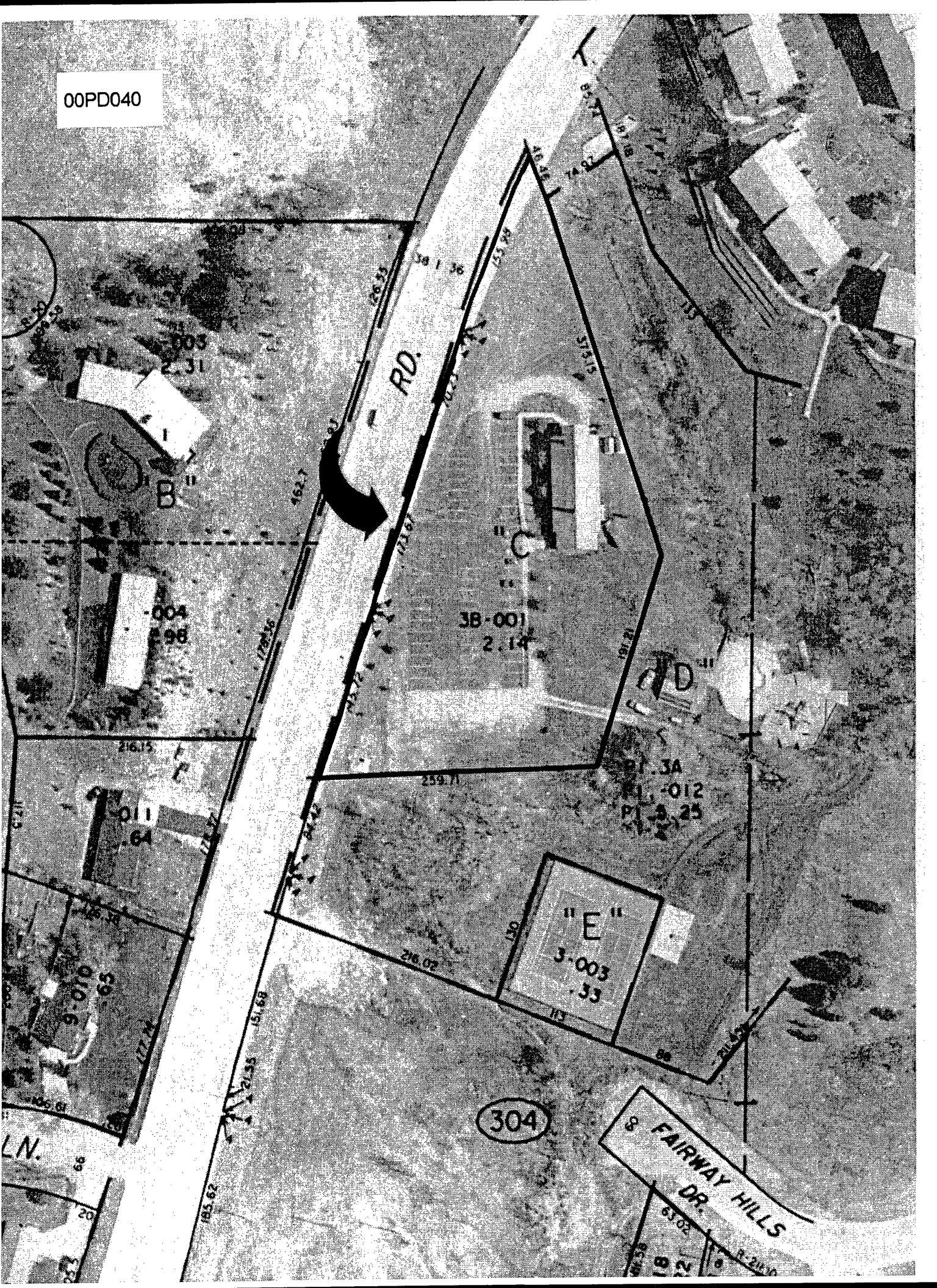


00PD040



005
2.31
"B"

004
2.98

3B-001
2.14

PI 3A
PI 1-012
PI 3-25

"E"
3.003
.33

304

8 FAIRWAY HILLS
DR.

RD.

"D"

LN.

183.62

213.55

151.68

177.74

216.15

162.7

172.46

173.8

153.83

153.36

74.92

191.18

57.515

113

113

113

113

113

113

113

117.9

126.38

9-010

65

177.74

183.62

213.55

151.68

177.74

216.15

162.7

172.46

173.8

153.83

153.36

74.92

191.18

57.515

113

113

113

113

113

113

113

22.3

20

66

177.74

183.62

213.55

151.68

177.74

216.15

162.7

172.46

173.8

153.83

153.36

74.92

191.18

57.515

113

113

113

113

113

113

113

113

22.3

20

66

177.74

183.62

213.55

151.68

177.74

216.15

162.7

172.46

173.8

153.83

153.36

74.92

191.18

57.515

113

113

113

113

113

113

113

113

22.3

20

66

177.74

183.62

213.55

151.68

177.74

216.15

162.7

172.46

173.8

153.83

153.36

74.92

191.18

57.515

113

113

113

113

113

113

113

113

22.3

20

66

177.74

183.62

213.55

151.68

177.74

216.15

162.7

172.46

173.8

153.83

153.36

74.92

191.18

57.515

113

113

113

113

113

113

113

113

22.3

20

66

177.74

183.62

213.55

151.68

177.74

216.15

162.7

172.46

173.8

153.83

153.36

74.92

191.18

57.515

113

113

113

113

113

113

113

113

22.3

20

66

177.74

183.62

213.55

151.68

177.74

216.15

162.7

172.46

173.8

153.83

153.36

74.92

191.18

57.515

113

113

113

113

113

113

113

113

22.3

20

66

177.74

183.62

213.55

151.68

177.74

216.15

162.7

172.46

173.8

153.83

153.36

74.92

191.18

57.515

113

113

113

113

113

113

113

113

22.3

20

66

177.74

183.62

213.55

151.68

177.74

216.15

162.7

172.46

173.8

153.83

153.36

74.92

191.18

57.515

113

113

113

113

113

113

113

113

22.3

20

66

177.74

183.62

213.55

151.68

177.74

216.15

162.7

172.46

173.8

153.83

153.36

74.92

191.18

57.515

113

113

113

113

113

113

113

113

22.3

20

66

177.74

183.62

213.55

151.68

177.74

216.15

162.7

172.46

173.8

153.83

153.36

74.92

191.18

57.515

113

113

113

113

113

113

113

113

22.3

20

66

177.74

183.62

213.55

151.68

177.74

216.15

162.7

172.46

173.8