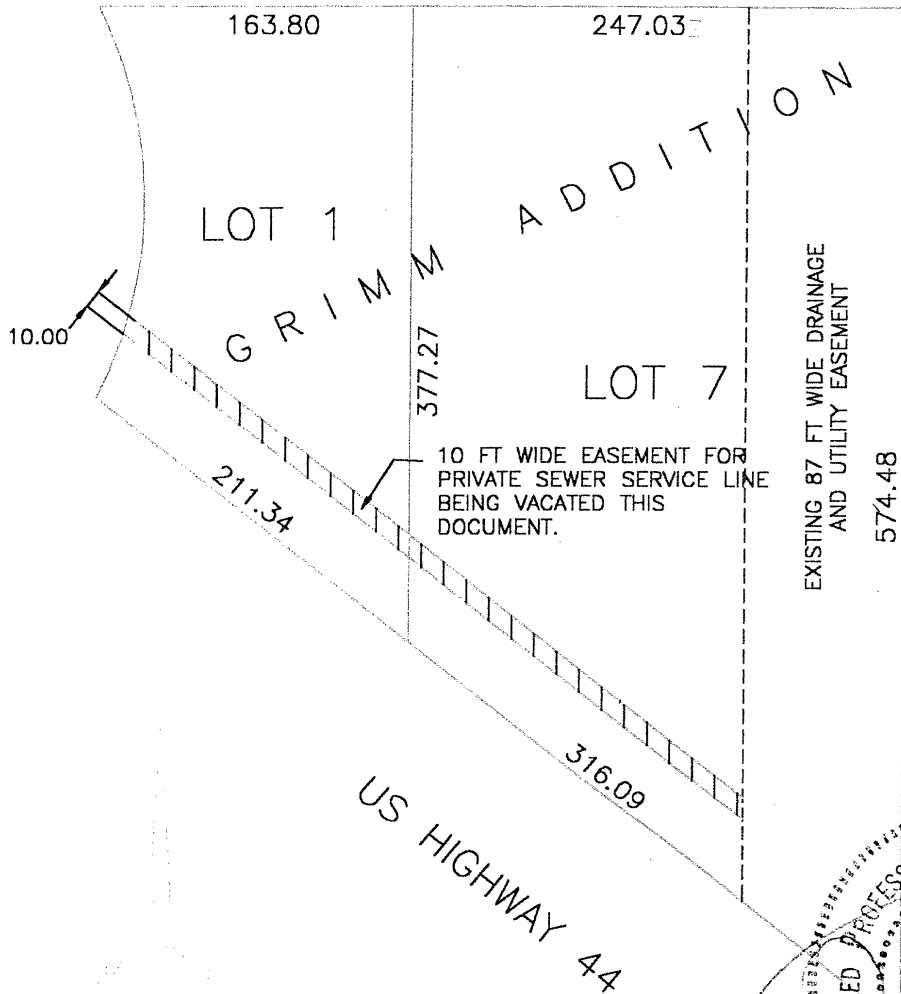


EXHIBIT A

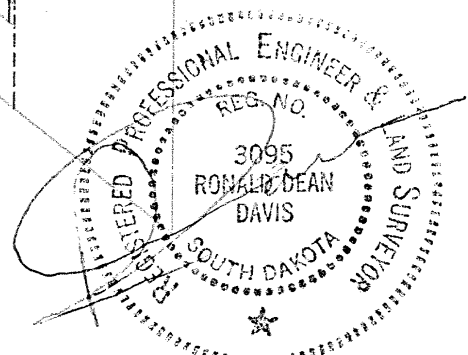
VACATION OF 10 FT WIDE PRIVATE SEWER SERVICE LINE EASEMENT ACCROSS LOT 1 AND LOT 7 OF GRIMMS ADDITION, AS PREVIOUSLY RECORDED IN PLAT BOOK 28 PAGE 94 AT THE PENNINGTON COUNTY REGISTER OF DEEDS OFFICE.



RECEIVED

AUG 30 2000

Rapid City
Planning Department



PREPARED BY:

DAVIS ENGINEERING & LAND SURVEYING
1060 KINGS ROAD
RAPID CITY, SOUTH DAKOTA 57702
605-341-3095 PH 605-341-7428 FAX

SCALE 1" = 100'
August 30, 2000