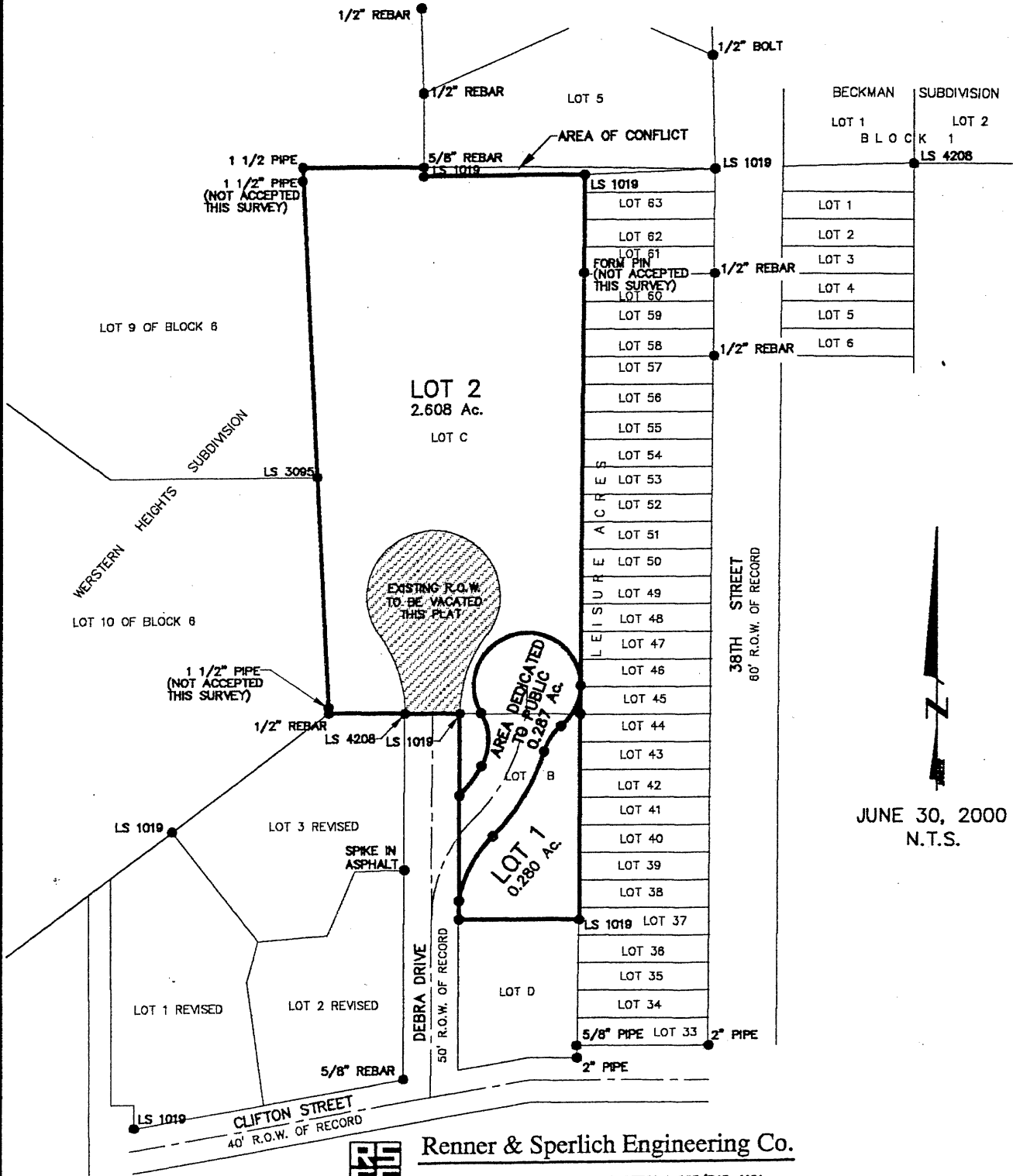


00SV013

PLAT OF LOTS 1 & 2 AND DEDICATED R.O.W. OF DEBRA SUBDIVISION

(formerly Lots B & C of Lot 2 of OutLot 2 of the SE1/4 of the SW1/4
of Section 4, T1N, R7E, BHM and a portion of Debra Drive R.O.W.)
LOCATED IN THE SE1/4 OF THE SW1/4
SECTION 4, T1N, R7E, BHM
RAPID CITY, PENNINGTON COUNTY, SOUTH DAKOTA



JUNE 30, 2000
N.T.S.



Renner & Sperlich Engineering Co.

816 Sixth St. * Rapid City, SD 57701 * 605/342-1191
FAX: 605/342-1405 * E-MAIL: X18FIAT@AOL.COM