

METES AND BOUNDS: PARCEL NO.1

BEGINNING AT THE NORTHWEST CORNER OF SECTION 26, T1N, R7E, B.H.M., THENCE DUE EAST, 968.07 TO POINT NO.24, THE TRUE POINT OF BEGINNING, THENCE N 29-59'44.6"E, 150.00' TO POINT NO.100, THENCE S13-33'40.9"W, 681.81' TO POINT NO.11, THENCE S89-57'58.5"W, 776.20' TO POINT NO.16, THENCE N7-23'42"E, 668.78' TO POINT NO.24, THE TRUE POINT OF BEGINNING, THIS PARCEL 1 CONTAINS 12.3749 ACRES, MORE OR LESS.

METES AND BOUNDS: PARCEL NO.2

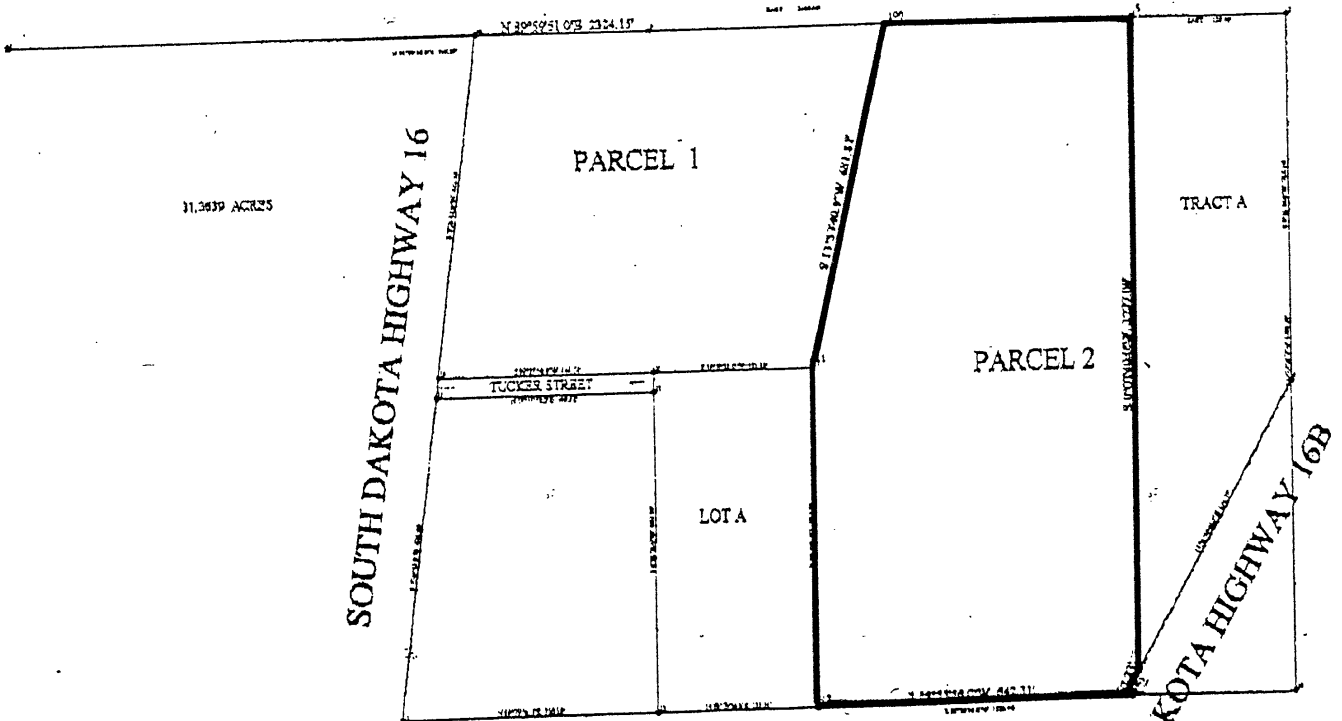
BEGINNING AT THE NORTHWEST CORNER OF SECTION 26, T1N, R7E, B.H.M., THENCE N89-59'44.6"E, 1518.07' TO POINT NO.100, THE TRUE POINT OF BEGINNING THENCE N89-59'44.6"E, 365.08' TO POINT NO.6, THENCE S0-07'49"W, 1277.08' TO POINT NO.7, THENCE ON A LEFT CURVE WITH R=2939.79', ARC OF 32.23' TO POINT NO.4, THENCE S89-55'56"W, 642.31' TO POINT NO.12, THENCE N0-01'41.6"E, 662.79' TO POINT NO.11, THENCE N13-33'40.9"E, 681.81' TO POINT NO.100, THE TRUE POINT OF BEGINNING, THIS PARCEL 2 CONTAINING 18.9850 ACRES MORE OR LESS.

SURVEYOR'S CERTIFICATE

I, MARK J. POLENZ, DO HEREBY CERTIFY THAT I HAVE PREPARED THE ABOVE DESCRIBED DOCUMENT AND THAT THE INFORMATION SHOWN HEREON IS AN ACCURATE REPRESENTATION OF THE SUBJECT PROPERTY.

DATED THIS 15<sup>th</sup> DAY OF July, 2000.

*Mark J. Polenz*  
MARK J. POLENZ-RLS NO.4208  
STATE OF SOUTH DAKOTA



REGISTERED LAND SURVEYOR  
REG. No. 4208