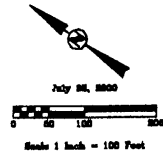


PLAT OF RED ROCK SUBDIVISION - PHASE 1

Being a portion of :

Prepared by
Dream Design International, Inc.
343 Cubney Street Suite 104
Rapid City, SD 57701
605/346-0038

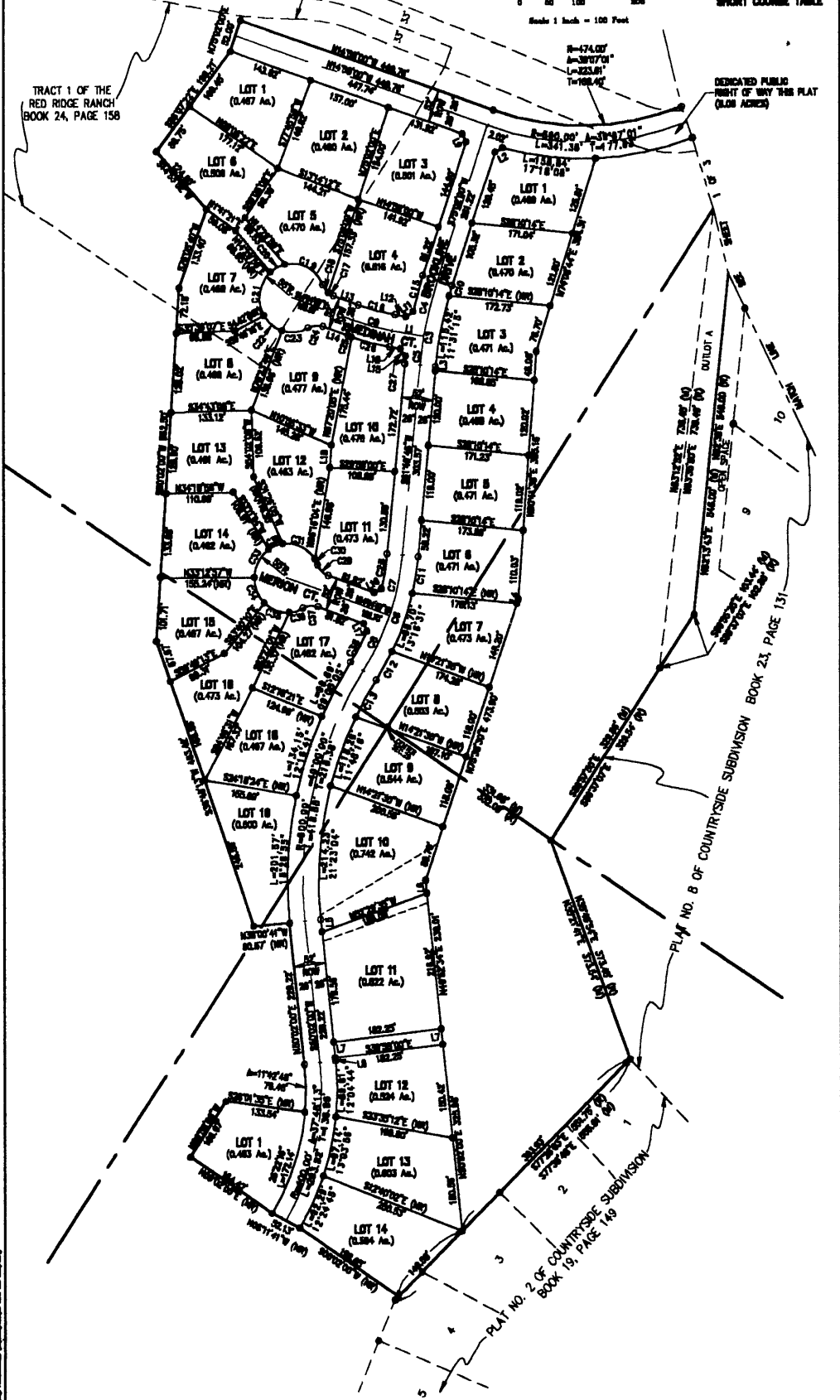
66' UTILITY EASEMENT &
PLATTED PRIVATE ROADWAY
(PICARDI RANCE ROAD)
BOOK 24, PAGE 158



NOTE:
SEE SHEET 1 OF 3
FOR CURVE TABLE AND
SHORT CURVE TABLE

TRACT 1 OF THE
RED RIDGE RANCH
BOOK 24, PAGE 158

DEDICATED PUBLIC
RIGHT OF WAY THIS PLAT
(BLOW AWAY)



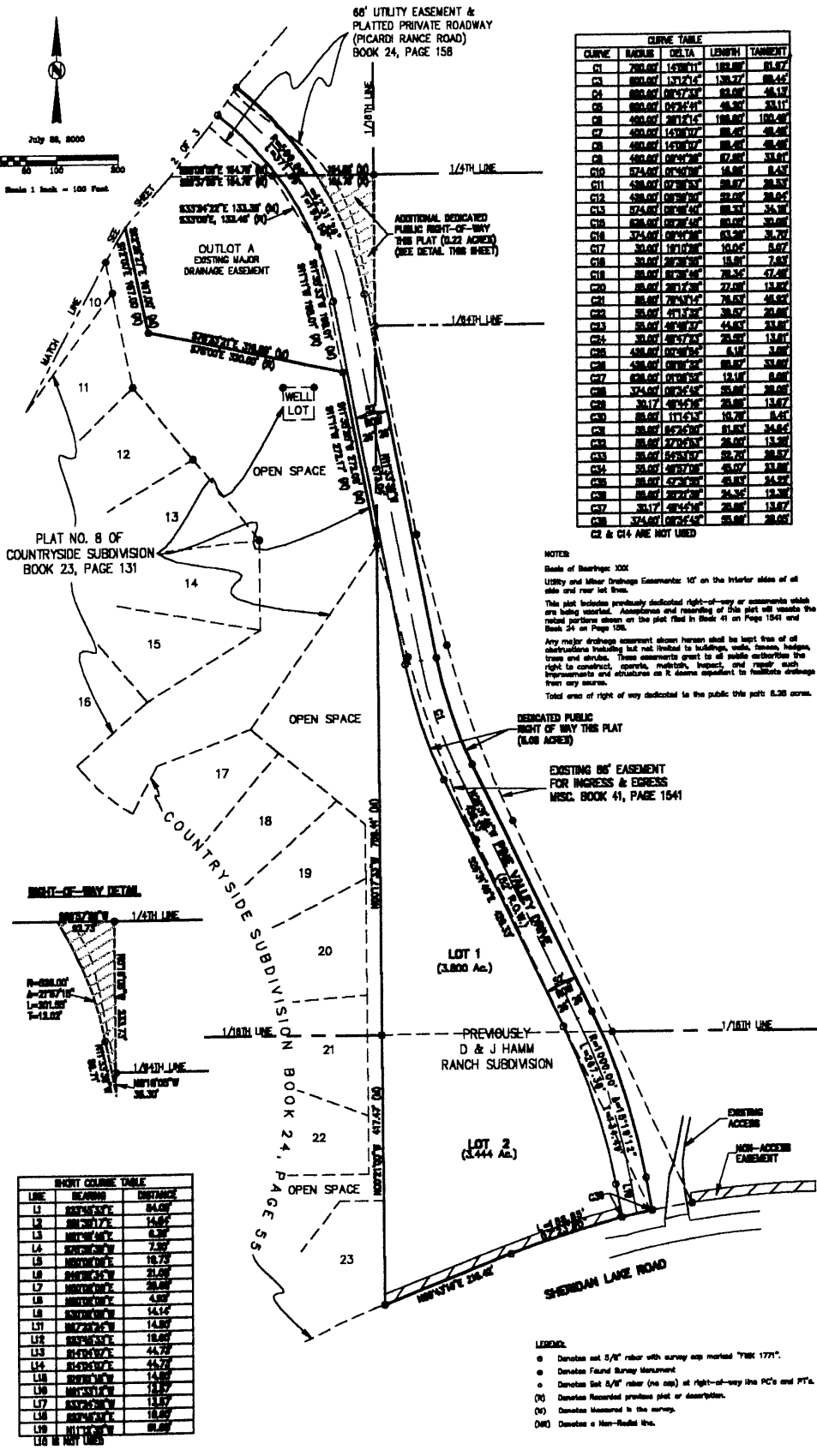
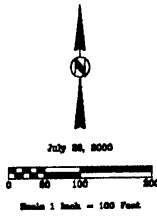
10/11/2011 10:11:11 AM

PLAT OF RED ROCK SUBDIVISION - PHASE 1

Being a portion of :

-
-
-
-
-

Prepared by
 Dream Design International, Inc.
 343 Quincey Street Suite 104
 Rapid City, SD 57701
 605/348-0838

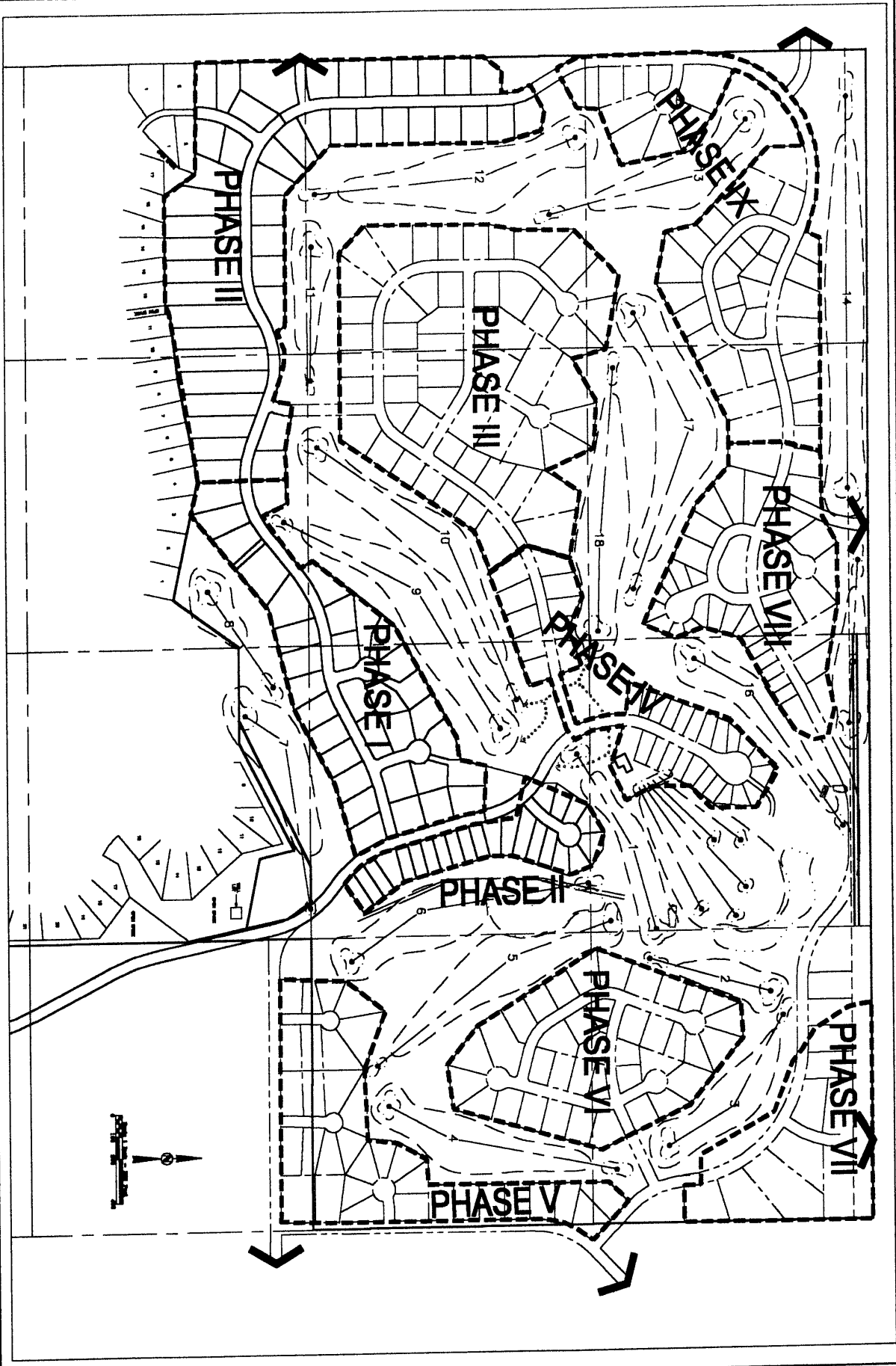


CURVE	BEARING	DELTA	LENGTH	TANGENT
C1	290.00°	157.911°	189.88	81.67
C2	290.00°	157.911°	139.77	60.45
C3	290.00°	157.911°	89.66	46.17
C4	290.00°	157.911°	39.55	33.11
C5	290.00°	157.911°	189.88	100.48
C6	290.00°	157.911°	139.77	60.45
C7	290.00°	157.911°	89.66	46.17
C8	290.00°	157.911°	39.55	33.11
C9	290.00°	157.911°	189.88	100.48
C10	290.00°	157.911°	139.77	60.45
C11	290.00°	157.911°	89.66	46.17
C12	290.00°	157.911°	39.55	33.11
C13	290.00°	157.911°	189.88	100.48
C14	290.00°	157.911°	139.77	60.45
C15	290.00°	157.911°	89.66	46.17
C16	290.00°	157.911°	39.55	33.11
C17	290.00°	157.911°	189.88	100.48
C18	290.00°	157.911°	139.77	60.45
C19	290.00°	157.911°	89.66	46.17
C20	290.00°	157.911°	39.55	33.11
C21	290.00°	157.911°	189.88	100.48
C22	290.00°	157.911°	139.77	60.45
C23	290.00°	157.911°	89.66	46.17
C24	290.00°	157.911°	39.55	33.11
C25	290.00°	157.911°	189.88	100.48
C26	290.00°	157.911°	139.77	60.45
C27	290.00°	157.911°	89.66	46.17
C28	290.00°	157.911°	39.55	33.11
C29	290.00°	157.911°	189.88	100.48
C30	290.00°	157.911°	139.77	60.45
C31	290.00°	157.911°	89.66	46.17
C32	290.00°	157.911°	39.55	33.11
C33	290.00°	157.911°	189.88	100.48
C34	290.00°	157.911°	139.77	60.45
C35	290.00°	157.911°	89.66	46.17
C36	290.00°	157.911°	39.55	33.11
C37	290.00°	157.911°	189.88	100.48
C38	290.00°	157.911°	139.77	60.45
C39	290.00°	157.911°	89.66	46.17
C40	290.00°	157.911°	39.55	33.11
C41	290.00°	157.911°	189.88	100.48
C42	290.00°	157.911°	139.77	60.45
C43	290.00°	157.911°	89.66	46.17
C44	290.00°	157.911°	39.55	33.11
C45	290.00°	157.911°	189.88	100.48
C46	290.00°	157.911°	139.77	60.45
C47	290.00°	157.911°	89.66	46.17
C48	290.00°	157.911°	39.55	33.11
C49	290.00°	157.911°	189.88	100.48
C50	290.00°	157.911°	139.77	60.45
C51	290.00°	157.911°	89.66	46.17
C52	290.00°	157.911°	39.55	33.11
C53	290.00°	157.911°	189.88	100.48
C54	290.00°	157.911°	139.77	60.45
C55	290.00°	157.911°	89.66	46.17
C56	290.00°	157.911°	39.55	33.11
C57	290.00°	157.911°	189.88	100.48
C58	290.00°	157.911°	139.77	60.45
C59	290.00°	157.911°	89.66	46.17
C60	290.00°	157.911°	39.55	33.11
C61	290.00°	157.911°	189.88	100.48
C62	290.00°	157.911°	139.77	60.45
C63	290.00°	157.911°	89.66	46.17
C64	290.00°	157.911°	39.55	33.11
C65	290.00°	157.911°	189.88	100.48
C66	290.00°	157.911°	139.77	60.45
C67	290.00°	157.911°	89.66	46.17
C68	290.00°	157.911°	39.55	33.11
C69	290.00°	157.911°	189.88	100.48
C70	290.00°	157.911°	139.77	60.45
C71	290.00°	157.911°	89.66	46.17
C72	290.00°	157.911°	39.55	33.11
C73	290.00°	157.911°	189.88	100.48
C74	290.00°	157.911°	139.77	60.45
C75	290.00°	157.911°	89.66	46.17
C76	290.00°	157.911°	39.55	33.11
C77	290.00°	157.911°	189.88	100.48
C78	290.00°	157.911°	139.77	60.45
C79	290.00°	157.911°	89.66	46.17
C80	290.00°	157.911°	39.55	33.11
C81	290.00°	157.911°	189.88	100.48
C82	290.00°	157.911°	139.77	60.45
C83	290.00°	157.911°	89.66	46.17
C84	290.00°	157.911°	39.55	33.11
C85	290.00°	157.911°	189.88	100.48
C86	290.00°	157.911°	139.77	60.45
C87	290.00°	157.911°	89.66	46.17
C88	290.00°	157.911°	39.55	33.11
C89	290.00°	157.911°	189.88	100.48
C90	290.00°	157.911°	139.77	60.45
C91	290.00°	157.911°	89.66	46.17
C92	290.00°	157.911°	39.55	33.11
C93	290.00°	157.911°	189.88	100.48
C94	290.00°	157.911°	139.77	60.45
C95	290.00°	157.911°	89.66	46.17
C96	290.00°	157.911°	39.55	33.11
C97	290.00°	157.911°	189.88	100.48
C98	290.00°	157.911°	139.77	60.45
C99	290.00°	157.911°	89.66	46.17
C100	290.00°	157.911°	39.55	33.11

NOTES:
 Scale of Bearings: 300°
 Utility and Minor Drainage Easements: 10' on the interior side of all sides and rear lot lines.
 This plat includes previously indicated right-of-way or easements which are being vacated. Assurances and recording of this plat will vacate the right-of-way shown on the plat filed in Book 41 on Page 1541 and Book 24 on Page 158.
 Any major drainage easement shown herein shall be kept free of obstructions including but not limited to buildings, walls, fences, hedges, trees and shrubs. These easements exist to all include authorizes the right to construct, correct, maintain, inspect and repair such improvements and structures as it deems equivalent to facilitate drainage from any source.
 Total area of right of way dedicated to the public this plat: 8.36 acres.
 C2 & C14 ARE NOT USED

LINE	BEARING	DISTANCE
L1	S89°50'00"W	84.00
L2	S89°50'00"W	14.00
L3	N89°50'00"W	8.00
L4	S89°50'00"W	7.50
L5	N89°50'00"W	16.75
L6	S89°50'00"W	21.00
L7	N89°50'00"W	26.00
L8	S89°50'00"W	4.00
L9	N89°50'00"W	14.14
L10	S89°50'00"W	14.00
L11	N89°50'00"W	18.00
L12	S89°50'00"W	44.75
L13	N89°50'00"W	44.75
L14	S89°50'00"W	14.00
L15	N89°50'00"W	11.00
L16	S89°50'00"W	11.00
L17	N89°50'00"W	11.00
L18	S89°50'00"W	18.00
L19	N89°50'00"W	8.00
L20	N89°50'00"W	8.00

- LEGEND:
- Denotes set 5/8" rebar with survey cap marked "TRK 1771".
 - Denotes Found Survey Monument.
 - Denotes set 5/8" rebar (no cap) at right-of-way line PC's and PT's.
 - (D) Denotes Reserved portion plat or description.
 - (D) Denotes Monument in the survey.
 - (D) Denotes a Non-Redeem line.



SHEET 1 OF 1	MASTER PHASE PLAN RED ROCK ESTATES RAPID CITY, SD	PROJECT # 00-0300 APPROVED BY DESIGN DATE SURVEY DATE ASSESS DATE DRAWN BY	PERMIT LOCATION SECTION 10 T14, R7E, S04 SECTION SECTION SECTION		D.D.I. DREAM DESIGN INTERNATIONAL, INC. PROFESSIONAL STRUCTURAL & CIVIL ENGINEERING CONSULTANTS 300 QUINCY ST. SUITE 100, RAPID CITY, SD 57701 TEL: 605-342-0200 FAX: 605-342-0200 EMAIL: info@dreamdesign.com
-----------------	--	---	---	--	--