

METES AND BOUNDS: PARCEL NO.1

BEGINNING AT THE NORTHWEST CORNER OF SECTION 26, T1N, R7E, B.H.M.
THENCE DUE EAST, 968.07' TO POINT NO.24, THE TRUE POINT OF BEGINNING,
THENCE N 89-59'44.6"E, 110.00' TO POINT NO.100, THENCE S13-33'40.9"W,
681.81' TO POINT NO.11, THENCE S19-57'12.5"W, 776.20' TO POINT NO.16,
THENCE N7-23'42"E, 668.76' TO POINT NO.24, THE TRUE POINT OF BEGINNING,
THIS PARCEL 1 CONTAINS 12.3749 ACRES, MORE OR LESS.

METES AND BOUNDS: PARCEL NO.2

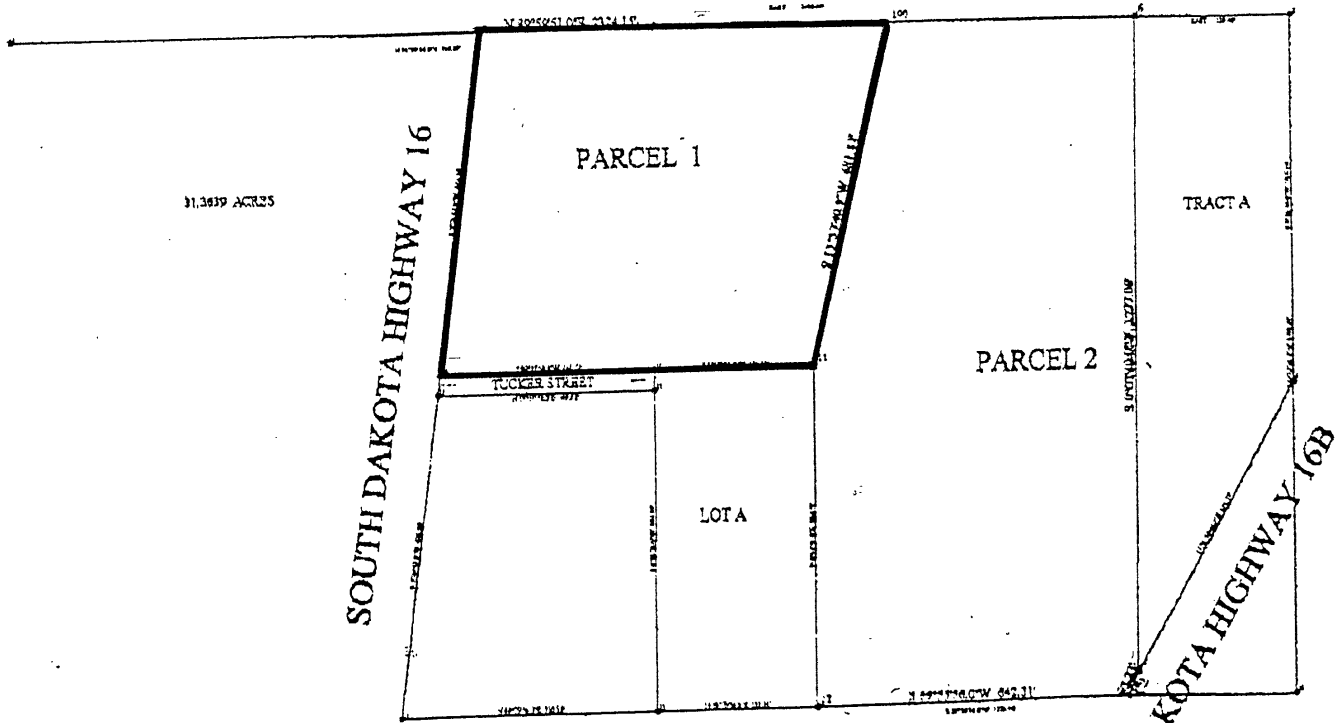
BEGINNING AT THE NORTHWEST CORNER OF SECTION 26, T1N, R7E, B.H.M.,
THENCE N89-59'52.4"E, 1818.07' TO POINT NO.100, THE TRUE POINT OF
BEGINNING THENCE N89-59'44.6"E, 104.08' TO POINT NO.6, THENCE S0-07'49"W,
1277.08' TO POINT NO.7, THENCE ON A LEFT CURVE WITH R=2939.79', ARC OF 32.23'
TO POINT NO.8, THENCE S89-55'56"W, 642.31' TO POINT NO.12, THENCE N0-01'41.6"E,
662.79' TO POINT NO.11, THENCE N13-33'40.9"E, 681.81' TO POINT NO.100, THE
TRUE POINT OF BEGINNING, THIS PARCEL 2 CONTAINING 18.9890 ACRES MORE
OR LESS.

SURVEYOR'S CERTIFICATE

I, MARK J. POLENZ, DO HEREBY CERTIFY THAT I HAVE PREPARED THE ABOVE
DESCRIBED DOCUMENT AND THAT THE INFORMATION SHOWN HEREON IS AN
ACCURATE REPRESENTATION OF THE SUBJECT PROPERTY.

DATED THIS 18th DAY OF July, 2000.

Mark J. Polenz
MARK J. POLENZ, RLS NO. 4208
STATE OF SOUTH DAKOTA



REGISTERED LAND SURVEYOR
REG. No. 4208