

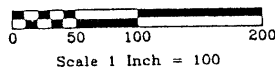
Plat of Lots 1, 2, 5, 7, + 8 of SSJE Subdivision formerly a portion of Lot A of D.D.E. Subdivision and a portion of the SW1/4 SW1/4 Section 32, T2N, R8E

located in SW1/4 of SW1/4 of Section 32, T2N, R8E, BHM, Rapid City, Pennington County, South Dakota.

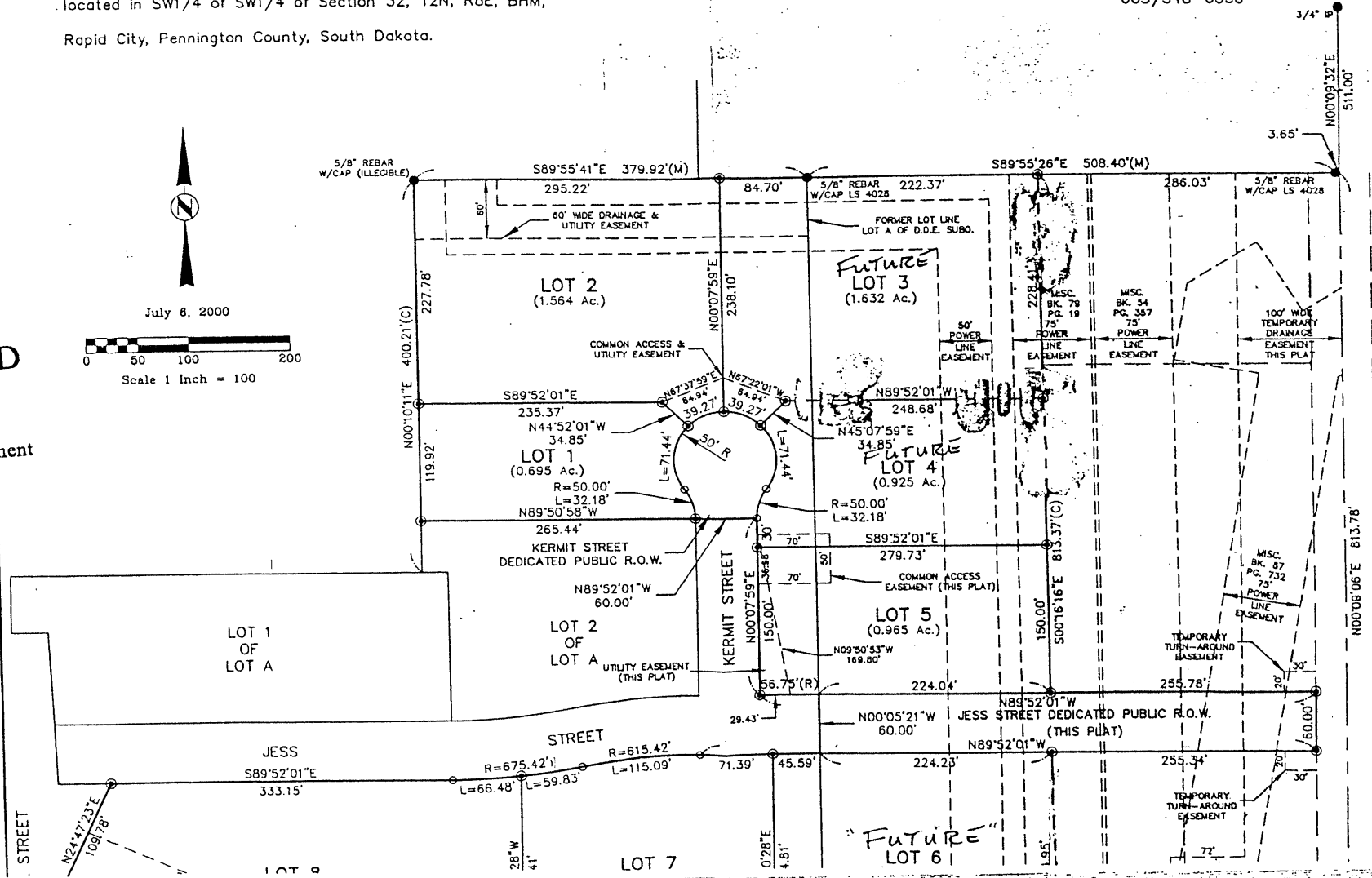
Prepared by:  
Dream Design International, Inc.  
343 Quincy Street Suite 104  
Rapid City, SD 57701  
605/348-0538



July 6, 2000



**RECEIVED**  
JUL 14 2000  
Rapid City  
Planning Department



FUTURE CREEK  
RIVE R.O.W.

5/8" REBAR  
W/CAP (ILLEGIBLE)

S89°55'41"E 379.92'(M)

84.70'

5/8  
W/CA

295.22'

60' WIDE DRAINAGE &  
UTILITY EASEMENT

PROVIDE EROSION CONTROL ALONG CONSTRUCTION LIMITS OF ALONG PROPERTY LINE BY USING EITHER A SILT FENCE OR STRAW BALES. REMOVE AFTER ESTABLISHED GROWTH OF GRASS SILVER MATERIALS.  
PROVIDE CONTROL TO PREVENT TRACKING OF MUD ONTO STREETS DURING CONSTRUCTION. PROVIDE 2" TO 3" CLEAN ACC. 20' LONG AT CONSTRUCTION PERIOD ACCESS POINTS.

**PROJECT DATA**

OWNER: [ILLEGIBLE]  
ADDRESS: [ILLEGIBLE]  
DATE: [ILLEGIBLE]

REVISIONS:  
NO. DATE DESCRIPTION

APPLICABLE CODES:  
[ILLEGIBLE]

PERMITS:  
[ILLEGIBLE]

UTILITIES:  
[ILLEGIBLE]

LANDSCAPE:  
[ILLEGIBLE]

NOTES:  
[ILLEGIBLE]

LEGEND:  
[ILLEGIBLE]

PROPOSED LOCATION:  
[ILLEGIBLE]

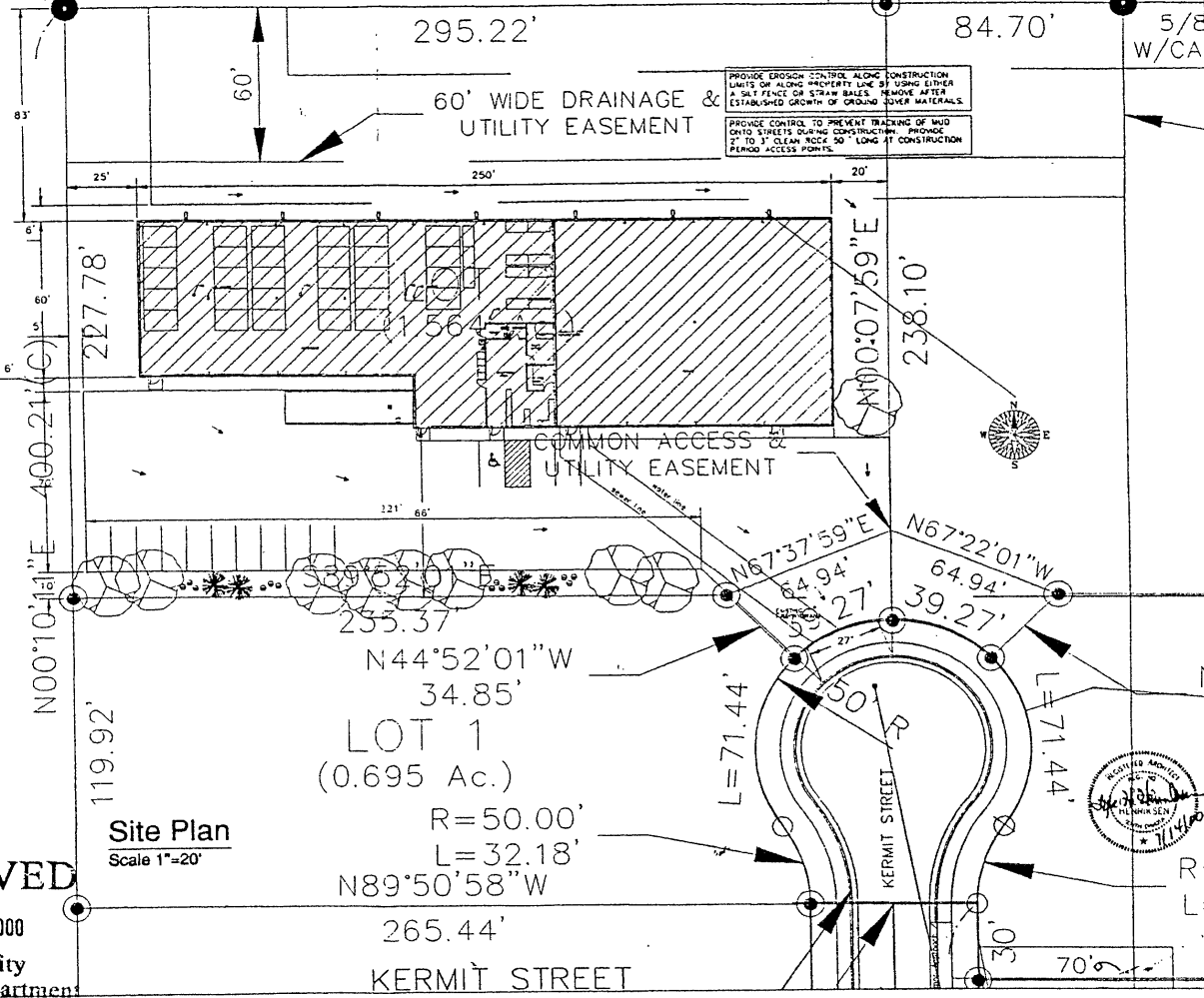
LANDSCAPE SYMBOLS:  
[ILLEGIBLE]

OTHER SYMBOLS:  
[ILLEGIBLE]

GRADING NOTES:  
[ILLEGIBLE]

SPRINKLER SYSTEM:  
[ILLEGIBLE]

NOTES:  
[ILLEGIBLE]



**RECEIVED**

JUL 14 2000

Rapid City  
Planning Department

Site Plan  
Scale 1"=20'

LOT 1  
(0.695 Ac.)

R=50.00'  
L=32.18'  
N89°50'58"W

265.44'  
KERMIT STREET

NO.	DATE	DESCRIPTION



Lyle H. Hennissen, Architect  
526 Saint Joseph Street, Suite A  
Rapid City, South Dakota 57701  
Phone (605) 394-0189



Site Plan  
Aiside Supply Center  
Rapid City, South Dakota



C1  
Drawing Number

