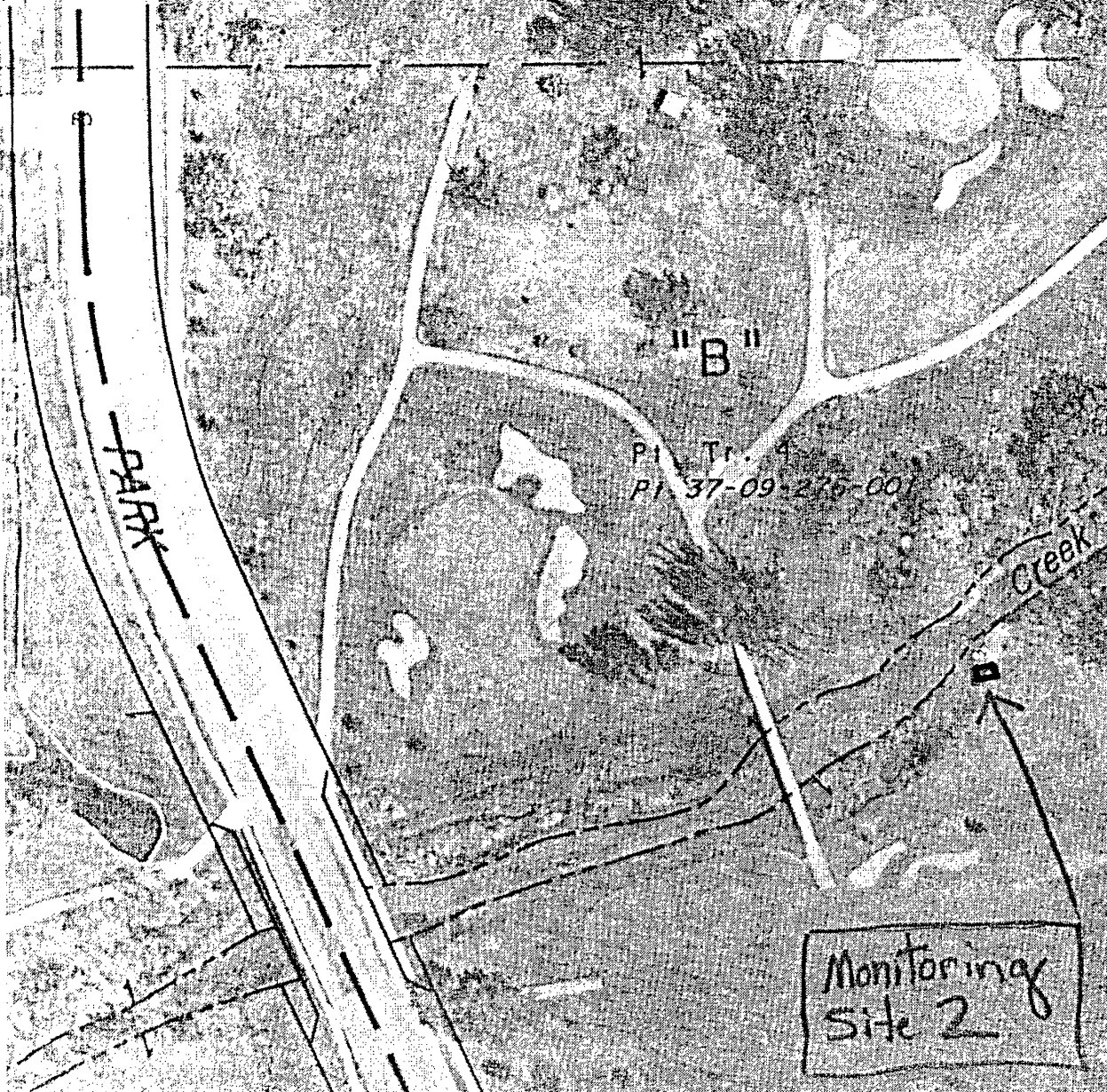


9B



- RAPID CITY GREENWAY TRACTS, PLAT OF TR. 4
- "C"
- CANYON LAKE HEIGHTS SUB., REPLAT OF LOTS 8R & 9R
2 & LOT 1R BLK. 3
- "D"
- CANYON LAKE HEIGHTS SUB., PLAT OF LOTS 1 THRU 9
2, LOTS 4 THRU 7, BLK. 2, LOTS 2 THRU 5 BLK. 3, LOTS
8 & 2 BLK. 4 & LOTS 1 & 2 BLK. 5
- "E"
- CANYON LAKE HEIGHTS SUB., PLAT OF LOTS 8 THRU 17
- "F"
- CANYON LAKE HEIGHTS SUB., PLAT OF LOT 2 BLK. 13
- "G"
- CANYON LAKE HEIGHTS SUB., PLAT OF LOT 1R BLK. 13
- "H"
- PLAT OF LOTS 1 THRU 3 OF LOT A OF LOT 4 OF NE 1/4
- "I"
- PLAT OF LOTS N & S OF LOT 4 OF 4 NE 1/4 SW 1/4
- "J"
- "K"
- CANYON LAKE HEIGHTS SUB., PLAT OF LOTS A & B OF
BLK. 5
- "L"
- CANYON LAKE HEIGHTS SUB., REPLAT OF LOTS 1R, 2R,
4 BLK. 5
- "M"
- CANYON LAKE HEIGHTS SUB., PLAT OF LOTS 3R & 4R BLK. 5
- "N"
- CANYON LAKE HEIGHTS SUB., REPLAT OF LOTS 4R & 5
- "O"
- CANYON LAKE HEIGHTS SUB., PLAT OF LOTS 5 THRU 7
- "P"
- CANYON LAKE HEIGHTS SUB., PLAT OF O.L. A
- "Q"
- HAGEN SUB.
- "R"
- CANYON LAKE HEIGHTS SUB., PLAT OF BLK. 6
- "S"

Monitoring
Site 2