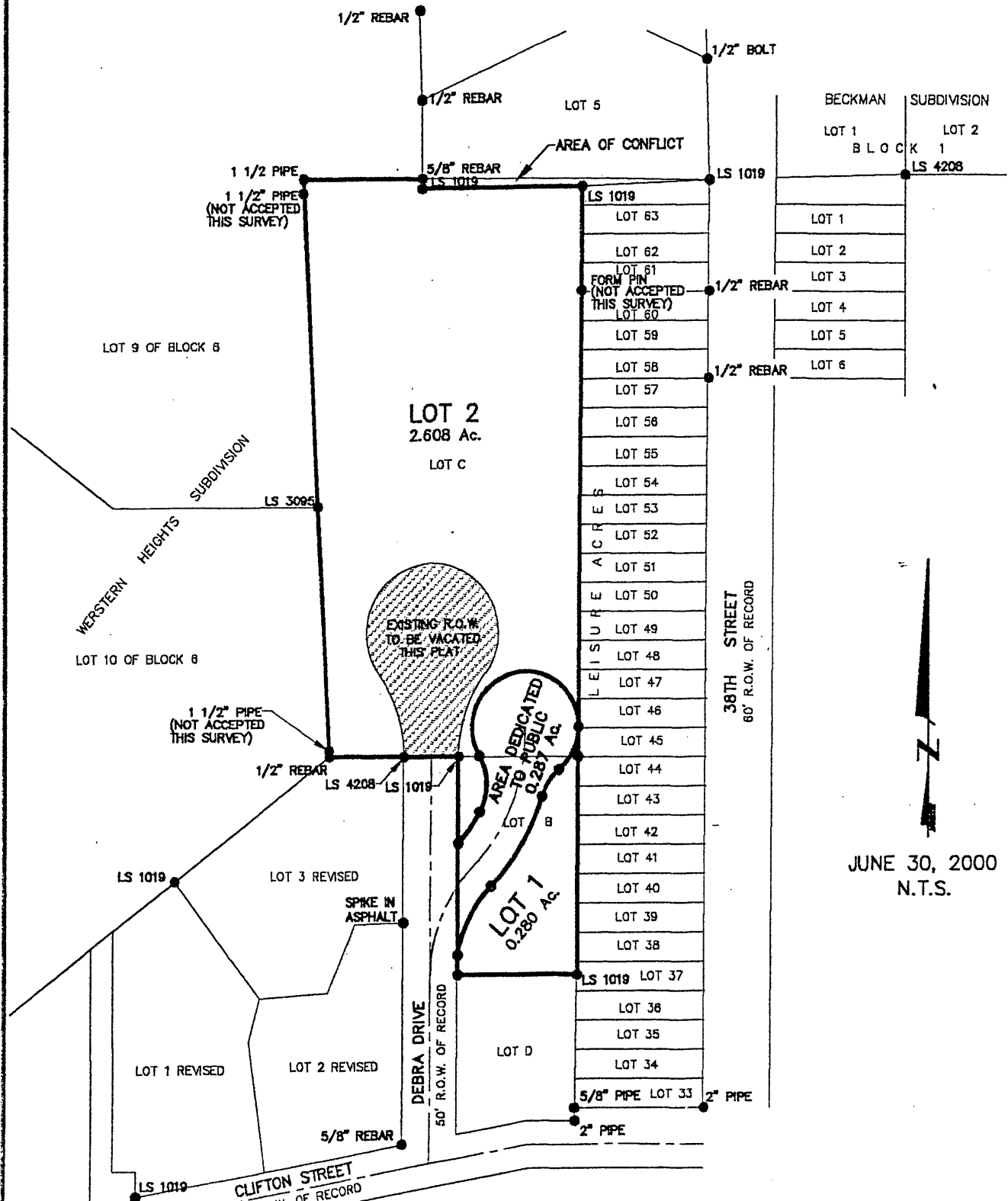


# PLAT OF LOTS 1 & 2 AND DEDICATED R.O.W. OF DEBRA SUBDIVISION

(formerly Lots B & C of Lot 2 of OutLot 2 of the SE1/4 of the SW1/4  
of Section 4, T1N, R7E, BHM and a portion of Debra Drive R.O.W.)  
LOCATED IN THE SE1/4 OF THE SW1/4  
SECTION 4, T1N, R7E, BHM  
RAPID CITY, PENNINGTON COUNTY, SOUTH DAKOTA



N  
Z  
JUNE 30, 2000  
N.T.S.



**Renner & Sperlich Engineering Co.**

614 56th St. • Rapid City, SD 57701 • 605/342-1191  
FAX: 605/342-1405 • E-MAIL: X19FIAT@AOL.COM