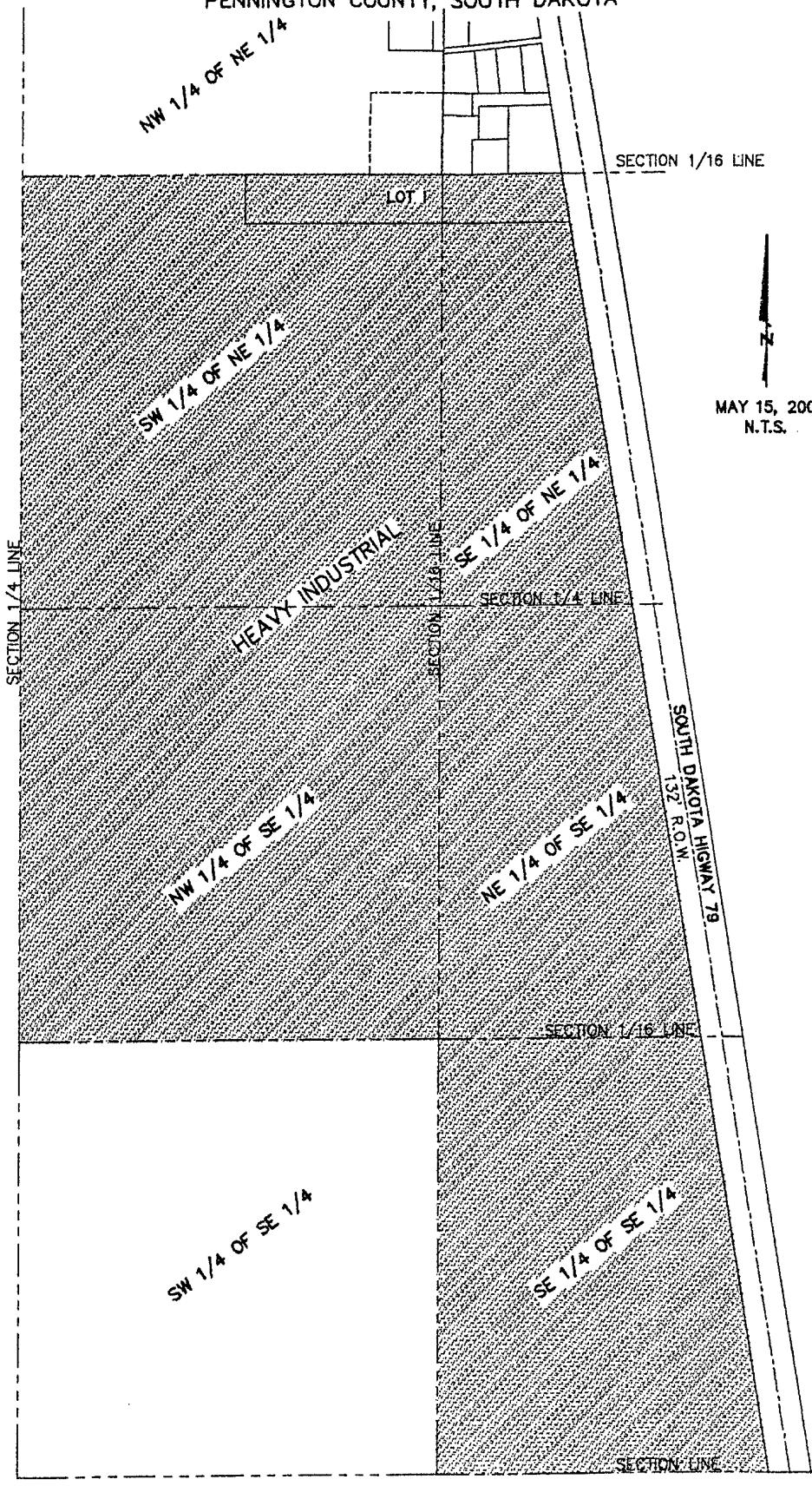


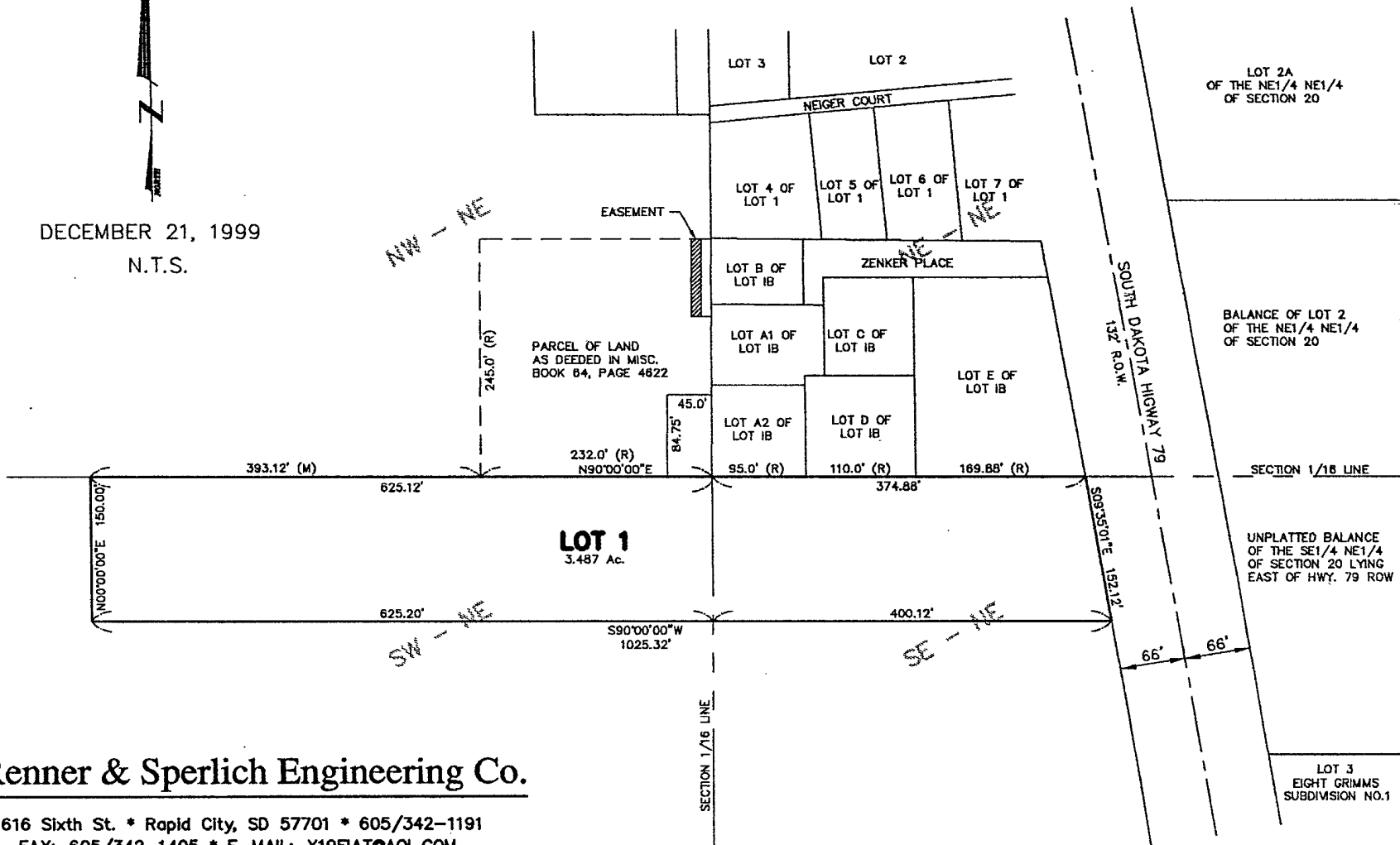
MASTER PLAN EXHIBIT
DACOTAH CEMENT PROPERTY
LOCATED IN THE E1/2 OF
SECTION 20, T2N, R7E, BHM
PENNINGTON COUNTY, SOUTH DAKOTA



N
MAY 15, 2000
N.T.S.

PLAT OF
LOT 1
OF LIMESTONE TUNNEL SUBDIVISION
 LOCATED IN THE SW1/4 OF NE1/4 AND THE SE1/4 OF NE1/4
 SECTION 20, T2N, R7E, BHM
 PENNINGTON COUNTY, SOUTH DAKOTA

DECEMBER 21, 1999
 N.T.S.



Renner & Sperlich Engineering Co.

616 Sixth St. * Rapid City, SD 57701 * 605/342-1191
 FAX: 605/342-1405 * E-MAIL: X19FIAT@AOL.COM