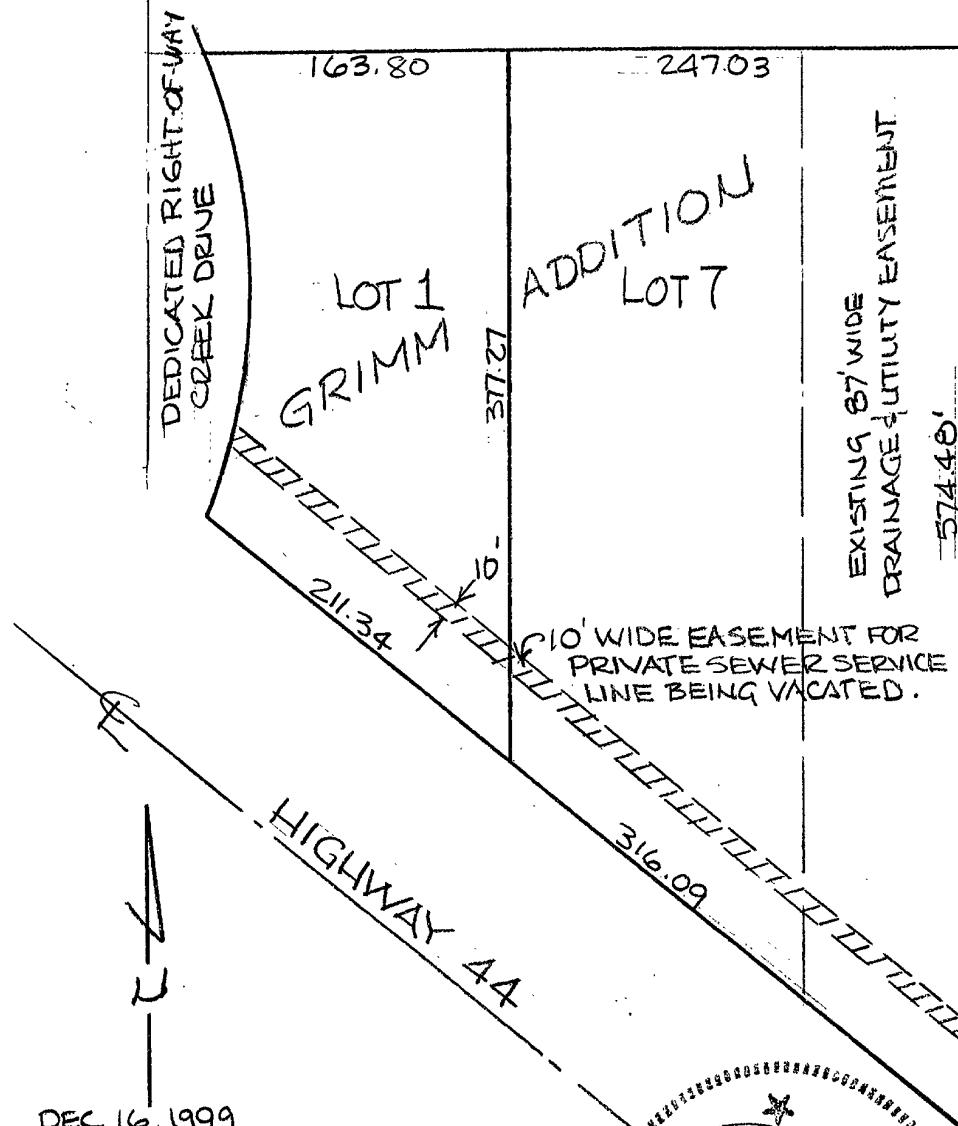
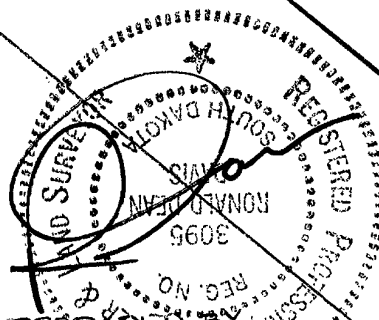


# EXHIBIT A

VACATION OF 10' WIDE PRIVATE SEWER  
SERVICE LINE EASEMENT ACROSS  
LOT 1 AND 7 OF GRIMMS ADDITION,  
AS PREVIOUSLY RECORDED IN PLAT BOOK 28  
PAGE 94 AT THE PENNINGTON COUNTY  
REGISTER OF DEEDS.



DEC 16, 1999  
SCALE: 1" = 100'



PREPARED BY  
DAVIS ENGINEERING  
P.O. BOX 7655  
RAPID CITY, SD 57709