

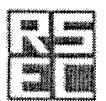
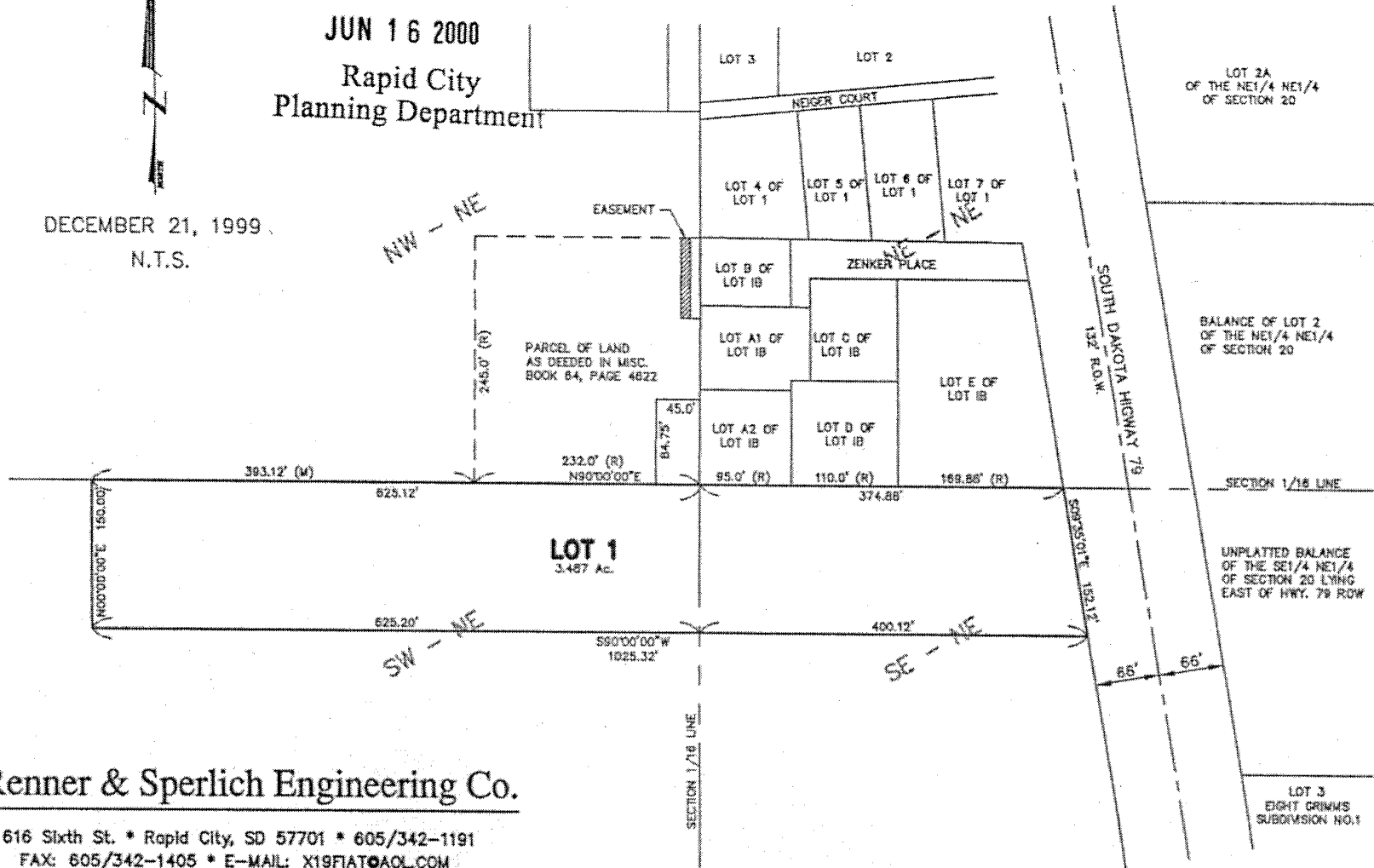
PLAT OF
LOT 1
 OF LIMESTONE TUNNEL SUBDIVISION
 LOCATED IN THE SW1/4 OF NE1/4 AND THE SE1/4 OF NE1/4
 SECTION 20, T2N, R7E, BHM
 PENNINGTON COUNTY, SOUTH DAKOTA

RECEIVED

JUN 16 2000

Rapid City
 Planning Department

DECEMBER 21, 1999
 N.T.S.



Renner & Sperlich Engineering Co.

616 Sixth St. * Rapid City, SD 57701 * 605/342-1191
 FAX: 605/342-1405 * E-MAIL: X19FIAT@AOL.COM