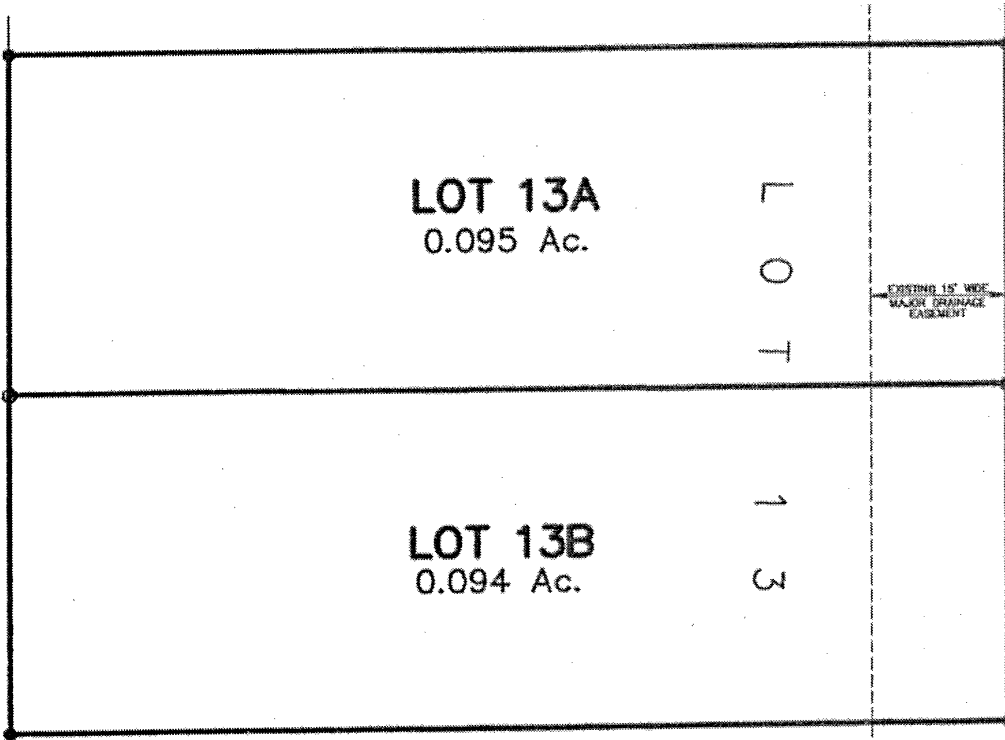


PLAT OF  
**LOTS 13A & 13B OF BLOCK 3**  
**THE MEADOWS SUBDIVISION**

(formerly Lot 13 of Block 3 of The Meadows Subdivision)  
LOCATED IN THE NW1/4 OF THE SE1/4  
SECTION 18, T1N, R7E, BHM  
RAPID CITY, PENNINGTON COUNTY, SOUTH DAKOTA

TRACT B

DERBY LANE  
52' R.O.W. OF RECORD



COMMON AREA  
DAKOTA RIDGE SUBDIVISION

LOT 12

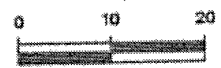
**RECEIVED**

JUN 16 2000

Rapid City  
Planning Department



JUNE 12, 2000



SCALE 1" = 20'



**Renner & Sperlich Engineering Co.**

616 Sixth St. • Rapid City, SD 57701 • 605/342-1191