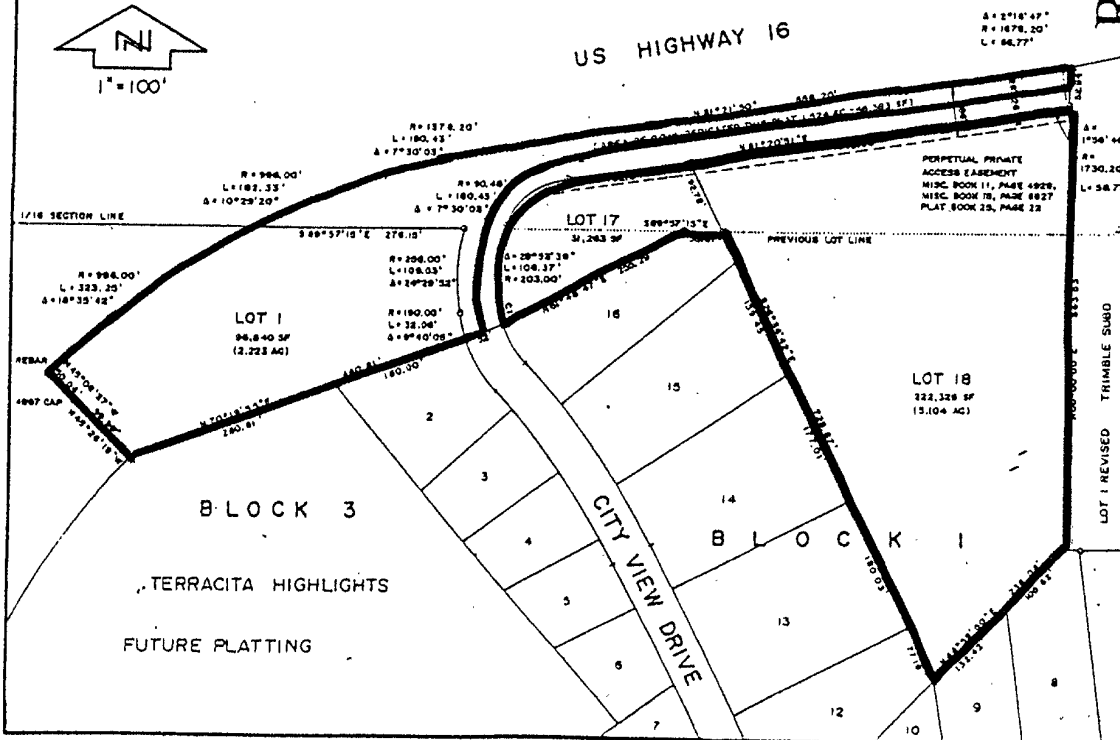
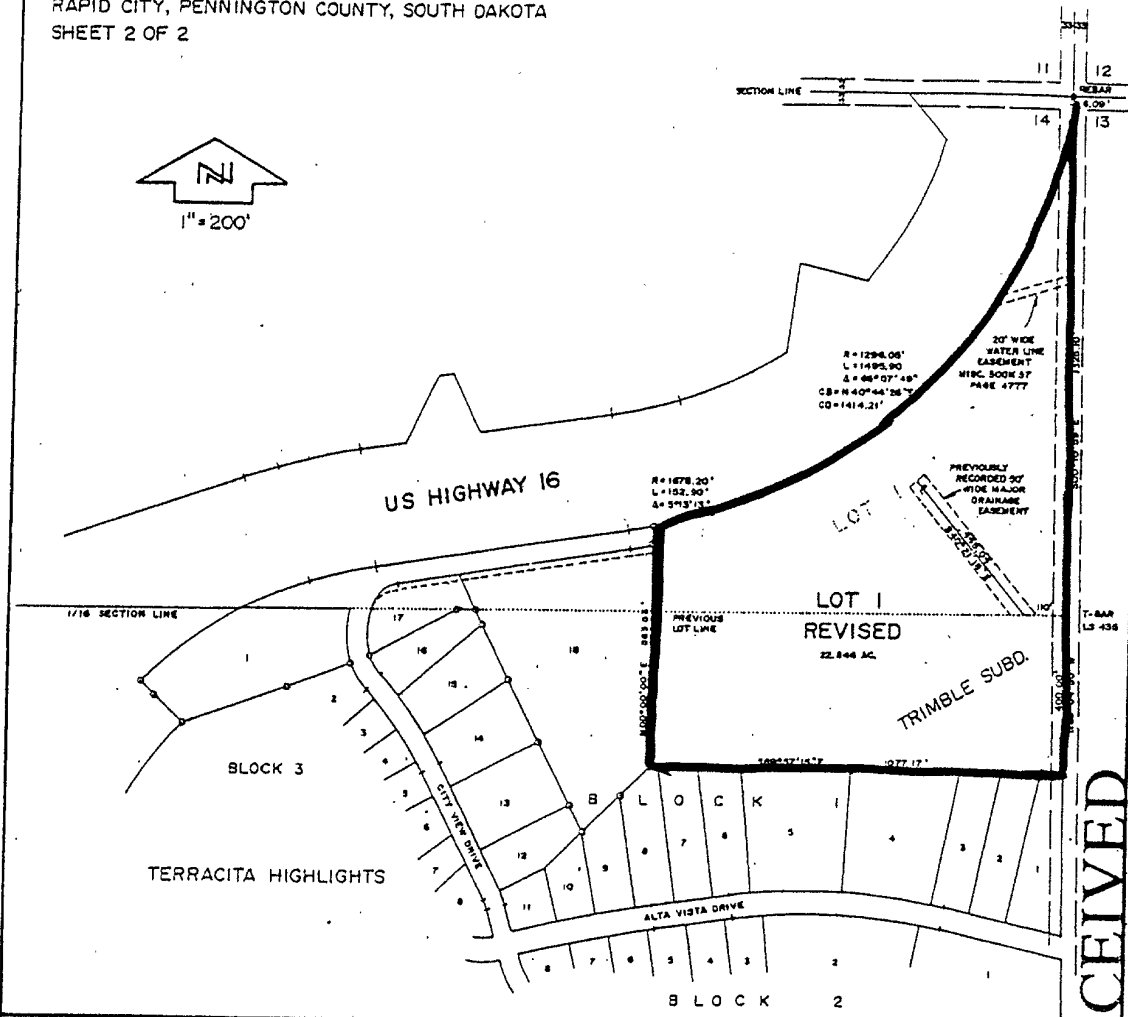


PLAT OF LOT I REVISED OF TRIMBLE SUBDIVISION,
 LOTS 17 AND 18 OF BLOCK 1 AND LOT 1 OF BLOCK 3 OF TERRACITA
 HIGHLIGHTS SUBDIVISION, AND DEDICATED RIGHT-OF-WAY

FORMERLY ALL OF LOT 1 OF TRIMBLE SUBDIVISION AND A PORTION OF THE UNPLATTED PORTION OF THE
 S1/2 NE1/4 OF SECTION 14, T1N, R7E, ALL LOCATED SECTION 14, T1N, R7E, BHM,
 RAPID CITY, PENNINGTON COUNTY, SOUTH DAKOTA
 SHEET 2 OF 2



RECEIVED

OCT 08 1999

Pennington County - Rapid City
 Planning Department