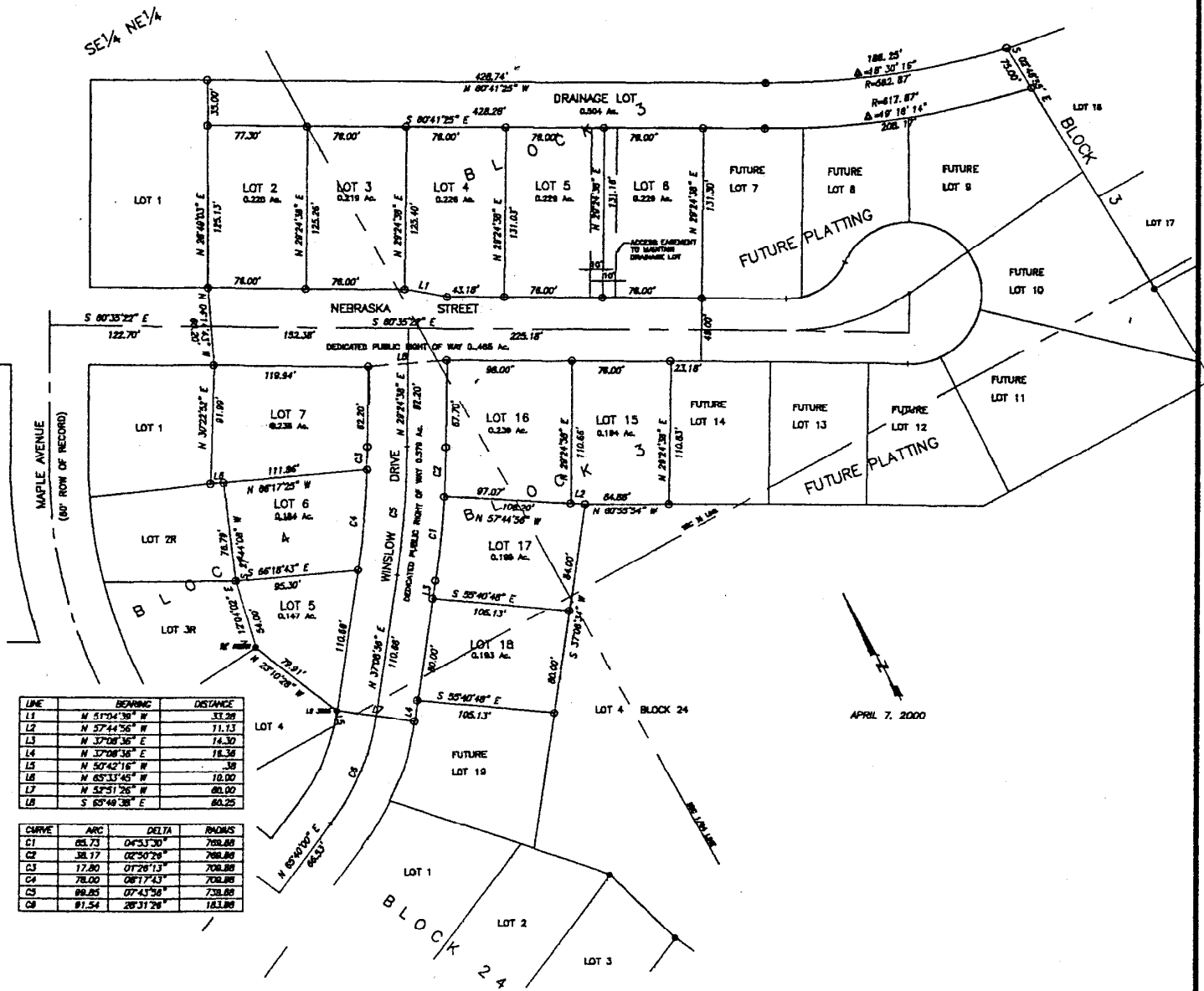


PLAT OF
 LOTS 2 THROUGH 6 BLOCK 3, AND LOTS 15 THROUGH 18 BLOCK 3,
 DRAINAGE LOT BLOCK 3, AND LOTS 5 THROUGH 7 OF BLOCK 4
 ROBBINSDALE ADDITION NO. 10

LOCATED IN SE $\frac{1}{4}$ OF NE $\frac{1}{4}$ AND THE NE $\frac{1}{4}$ OF SE $\frac{1}{4}$ OF SECTION 13, T1N, R7E, BHM
 RAPID CITY, PENNINGTON COUNTY, SOUTH DAKOTA



LINE	BEARING	DISTANCE
L1	N 51°04'30" W	33.99
L2	N 57°44'56" W	71.13
L3	N 37°08'36" E	14.30
L4	N 37°08'36" E	78.34
L5	N 57°42'16" W	38
L6	N 65°33'45" W	10.00
L7	N 52°51'26" W	80.00
L8	S 65°48'36" E	80.25

CURVE	ARC	DELTA	RADIUS
C1	65.73	04°53'30"	708.88
C2	38.17	02°50'26"	708.88
C3	17.80	01°26'13"	708.88
C4	78.00	08°17'43"	708.88
C5	88.85	07°43'56"	738.88
C6	81.54	28°31'28"	183.88