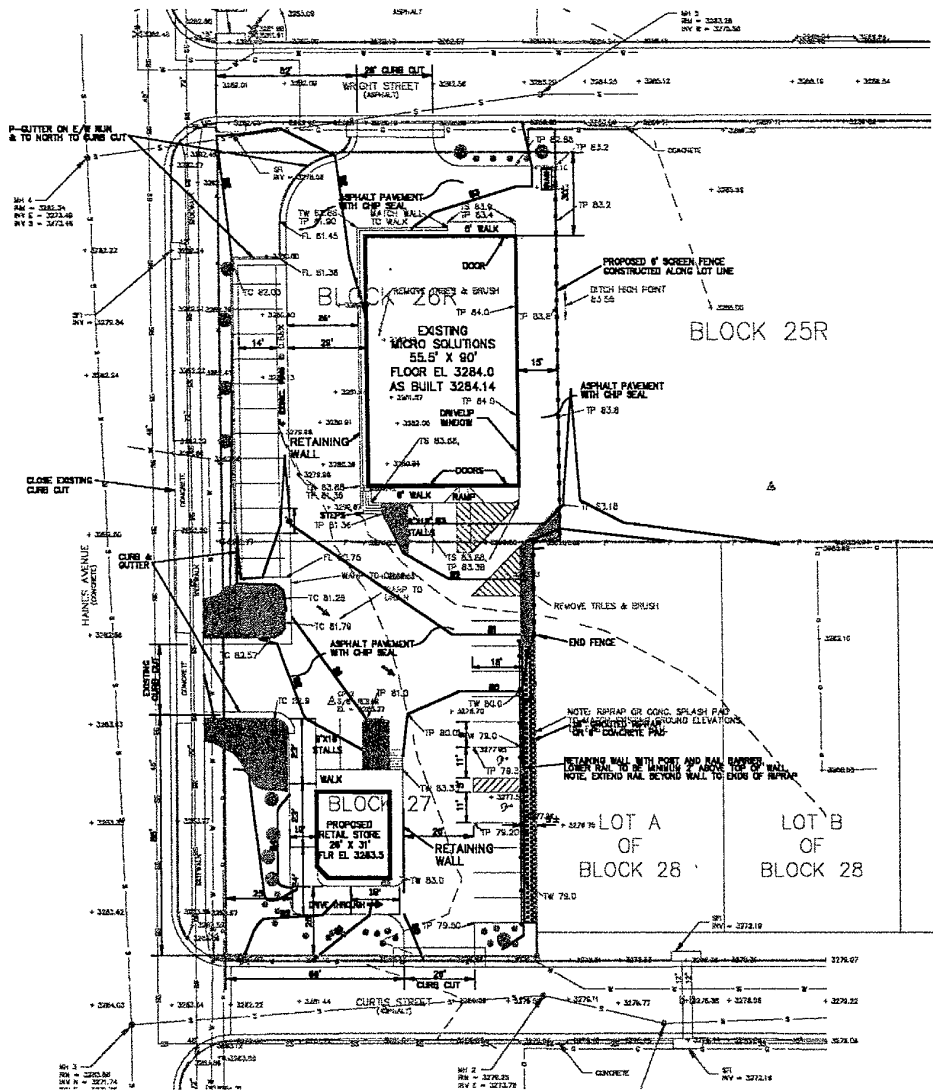


PROJECT /	DATE	REVISION	BY	DATE

**AMENDMENT TO
 PLANNED COMMERCIAL DEVELOPMENT
 BLOCKS 26R & 27 OF AIRPORT ADDITION
 RAPID CITY, SOUTH DAKOTA**



LANDSCAPE DATA
 SQUARE FOOTAGE OF BLOCKS 26R & 27 = 34,680 SF
 AREA OF BUILDINGS = 5785 SF
 LANDSCAPE POINTS REQUIRED = 28,895 SF
 LANDSCAPE POINTS PROVIDED = 28,000 SF
 GRAZE AREAS 1000 SF = 10,000 PTS
 ● SHRUBS = 24 EA @ 250 PTS = 13,000 PTS
 ● SMALL TREES = 11 EA @ 600 PTS = 6600 PTS
 ■ AREAS OF BANK, RIVER ROCK, OR BROWN COVER
 NOTE: ALL AREAS NOT PAVED OR OTHERWISE IMPROVED WILL BE GRAZE COVER

PARKING DATA
 SQUARE FOOTAGE OF BUILDINGS = 5785 SF
 PARKING STALLS REQUIRED = 5785/1000 X 5 = 29 STALLS
 PARKING STALLS PROVIDED = 28 STALLS PLUS DRIVEUP WINDOW STALL PLUS STACKING

NOTE REGARDING ASPHALT PAVEMENT
 ALL ASPHALT PAVEMENT SHALL BE CHIP SEALED IN ACCORDANCE WITH CITY OF RAPID CITY SPECIFICATIONS

- NOTES:**
1. ALL SITE WORK CONSTRUCTION SHALL CONFORM TO CITY OF RAPID CITY SPECIFICATIONS FOR PUBLIC WORKS CONSTRUCTION.
 2. ALL ADA REQUIREMENTS SHALL BE FOLLOWED.
 3. ALL PARKING STALLS ARE 6' WIDE EXCEPT HC STALLS ARE 11' WITH 5' CENTER AISLE BETWEEN HO STALLS.
 4. SIDEWALKS SHALL HAVE EDGE THICKENED TO 12" AT PAVEMENT.
 5. CONTRACTOR TO VERIFY EXISTING SITE CONDITIONS AND UTILITIES.

