

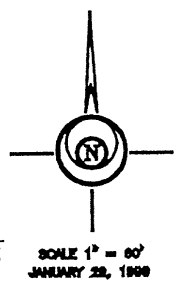
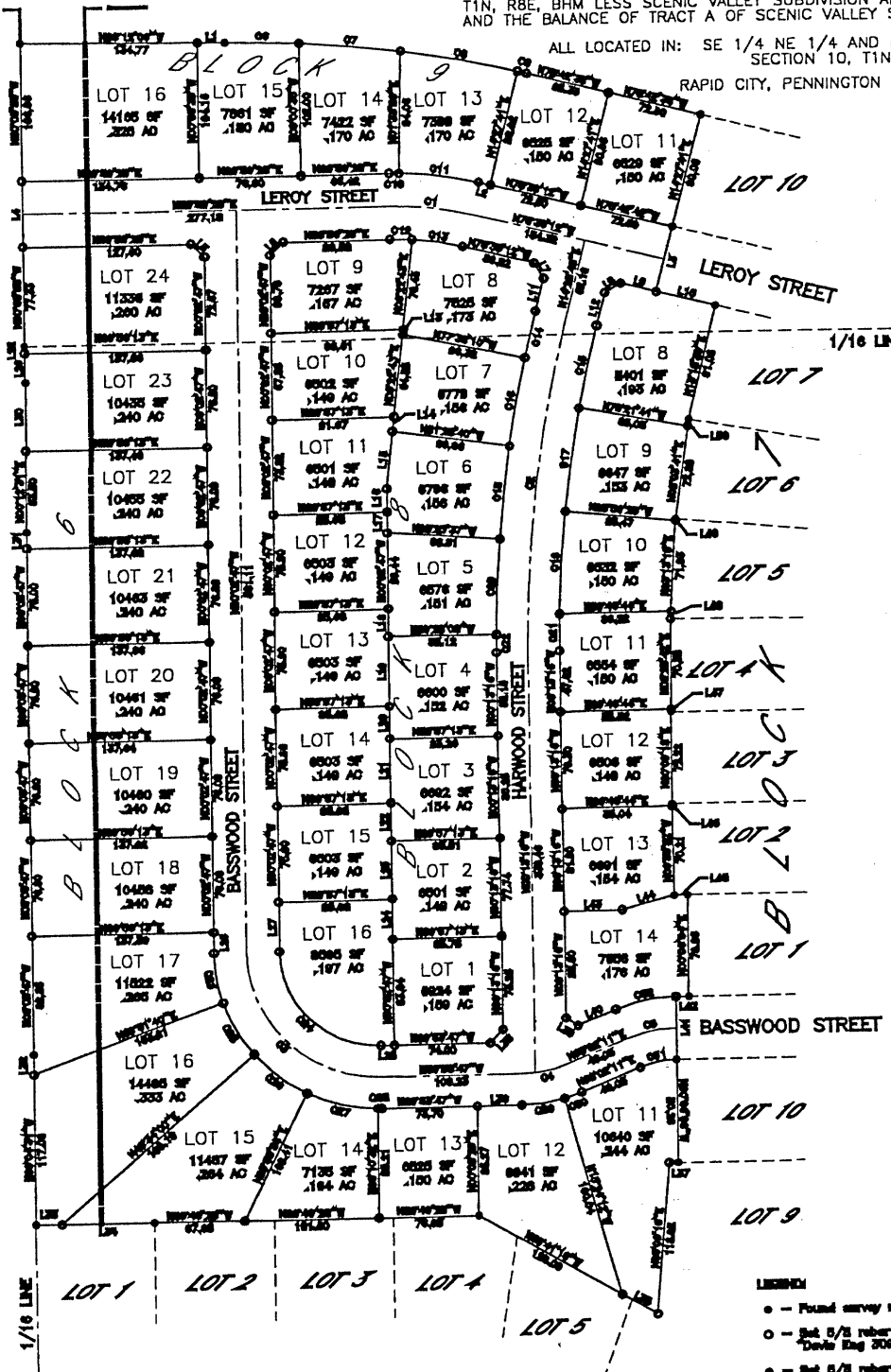
PLAT OF LOTS 11 THRU 24, BLOCK 6,
 LOTS 8 THRU 14, BLOCK 7,
 LOTS 1 THRU 16, BLOCK 8 AND LOTS 11 THRU 16, BLOCK 9
 OF SCENIC VALLEY SUBDIVISION



FORMERLY: SE 1/4 OF NE 1/4 OF SECTION 10,
 T1N, R8E, BHM LESS SCENIC VALLEY SUBDIVISION AND ROW
 AND THE BALANCE OF TRACT A OF SCENIC VALLEY SUBDIVISION

ALL LOCATED IN: SE 1/4 NE 1/4 AND NE 1/4 NE 1/4
 SECTION 10, T1N, R8E, BHM

RAPID CITY, PENNINGTON COUNTY, SOUTH DAKOTA



DRAINAGE NOTES:
 All major drainage easements shown hereon shall be kept free of all obstructions including, but not limited to, buildings, walls, fences, hedges, trees, and shrubs. These easements grant to all public authorities the right to construct, operate, maintain, improve, and repair such improvements and structures as it deems necessary to facilitate drainage from any source.

BUILDING RESTRICTIONS: Per Zoning Requirements
UTILITY & MINOR DRAINAGE EQUIPMENT: If side on the interior side of all side, rear, and front lot lines.

- LEGEND:**
- - Found survey monument as noted
 - - 3/8" iron with survey cap marked "Davis Eng 3060"
 - - 3/8" iron with no cap
 - (R) - Recorded in previous survey
 - (M) - Measured this survey
- DATE OF BEARING:** As shown hereon

SE 1/4 NE 1/4 LINE SCENIC VALLEY SUBDIVISION BY 16254, 17277 TRACT A BY 20977
 PREPARED BY:
DAVIS ENGINEERING & LAND SURVEYING
 PO BOX 7655 (605) 341-3095
 RAPID CITY, SD 57709