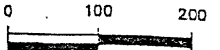


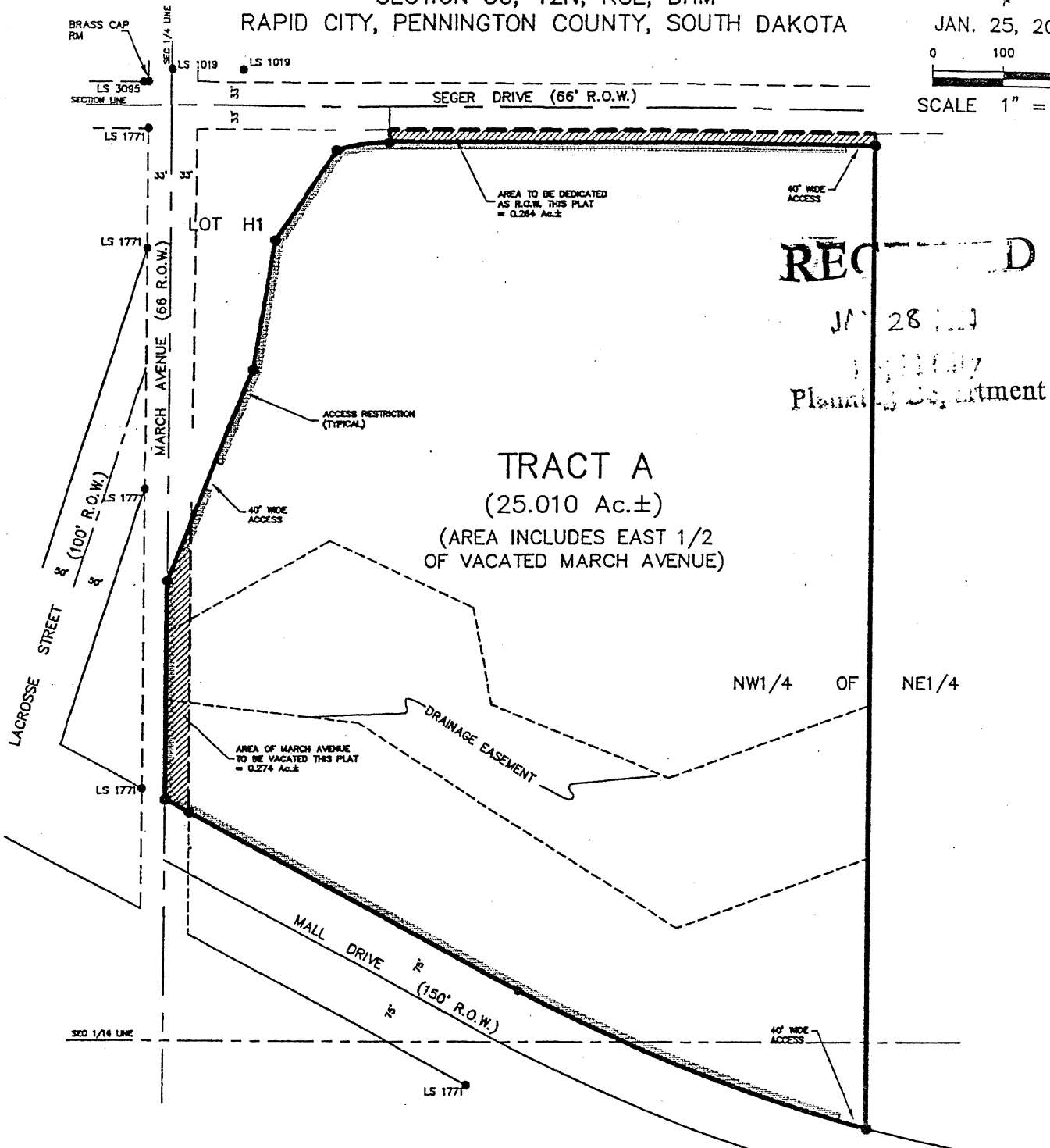
PLAT OF  
**TRACT A**  
**OF EAST MALL SUBDIVISION**

LOCATED IN NW1/4 OF NE1/4 AND SW1/4 OF NE1/4 OF  
 SECTION 30, T2N, R8E, BHM  
 RAPID CITY, PENNINGTON COUNTY, SOUTH DAKOTA

JAN. 25, 2000



SCALE 1" = 200'



**RECORDED**  
 JAN 28 2000  
 Planning Department

**TRACT A**  
 (25.010 Ac.±)  
 (AREA INCLUDES EAST 1/2  
 OF VACATED MARCH AVENUE)

NW1/4 OF NE1/4

**Renner & Sperlich Engineering Co.**  
 616 SIXTH ST. \* RAPID CITY, SD 57701 \* 605/342-1191

#53