

F M G, Inc.



2700 Bourke Road
Rapid City, SD 57704-0317
(605) 344-4108 FAX (605) 344-4322

TYLER KNUVE SUBDIVISION

PROPOSED EXPANSION

RAPID CITY, SD

Division / Date

Sheet Number

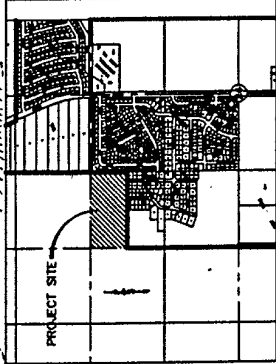
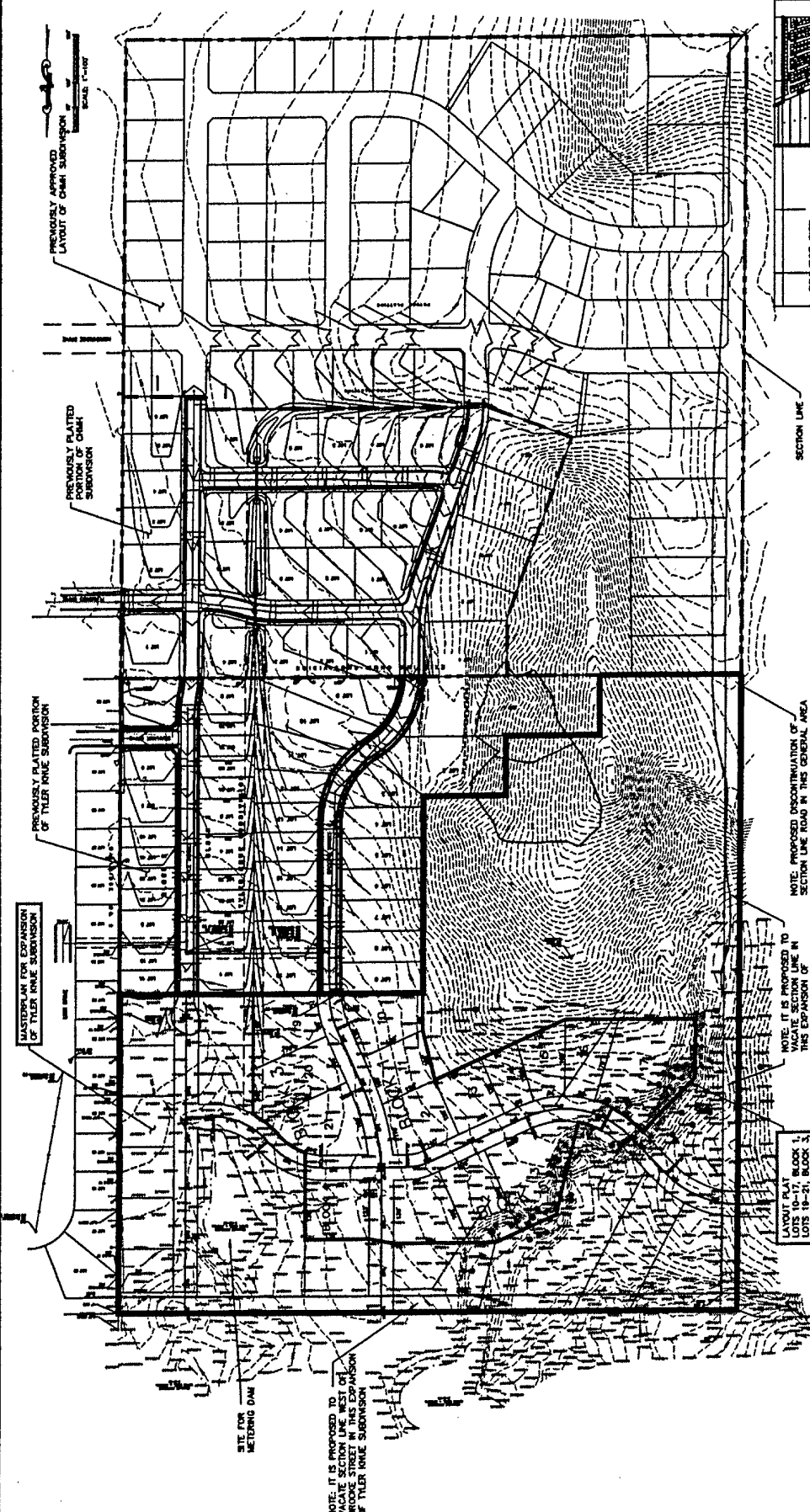
1

Sheet Title

1

Total Sheets

1



SECTION LINE

NOTE: PROPOSED DISCONTINUATION OF SECTION LINE ROAD IN THIS GENERAL AREA

NOTE: IT IS PROPOSED TO VACATE SECTION LINE IN THIS EXPANSION OF TYLER KNUVE SUBDIVISION

LAYOUT PLAT
LOTS 10-17, BLOCK 1,
LOTS 18-21, BLOCK 2,
LOTS 1-3, BLOCK 3,
LOTS 4-6, BLOCK 5

NOTE: LAYOUT PLAT DIMENSIONS ARE CONSIDERED APPROXIMATE AND ARE SUBJECT TO CHANGE

SITE FOR
RETAINING DAM

NOTE: IT IS PROPOSED TO VACATE SECTION LINE WEST OF BROCKME STREET IN THIS EXPANSION OF TYLER KNUVE SUBDIVISION

SECTION LINE