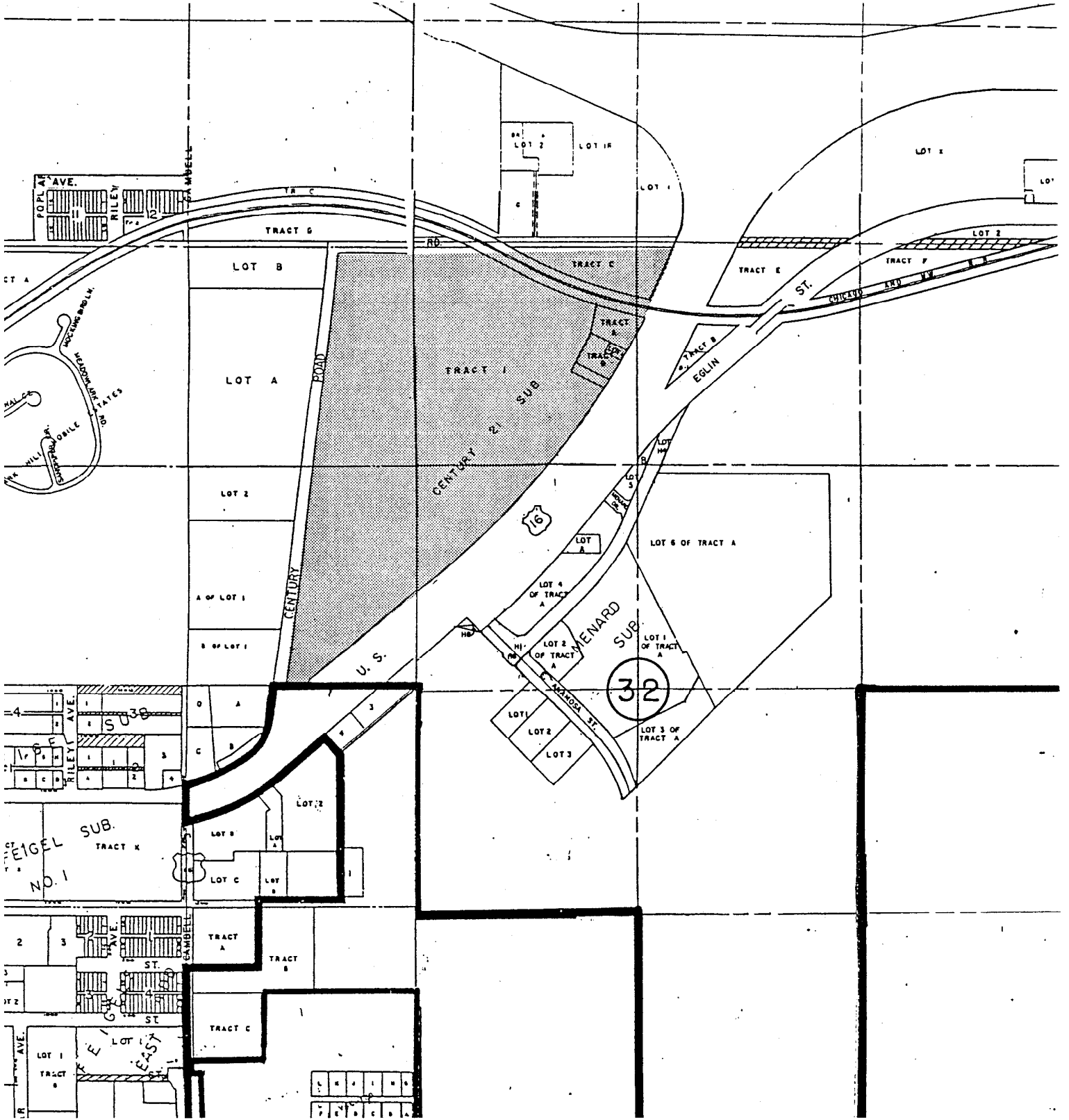
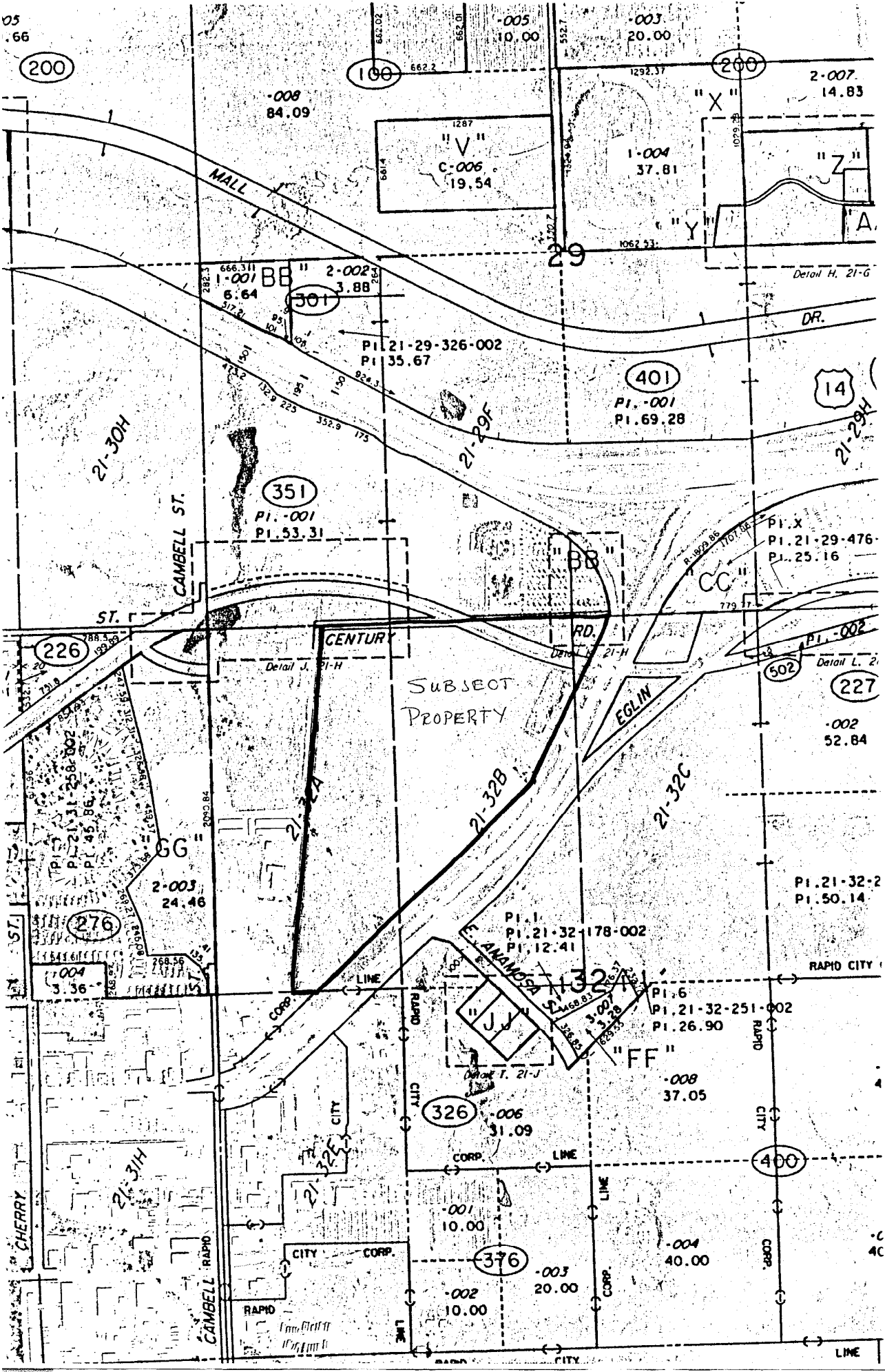


Comprehensive Plan Amendment #00CA004 - Century "21" Tract

Amendment to the North Rapid Neighborhood Area Future Land Use Plan, which is an amendment to the Comprehensive Plan. The proposed Amendment would change the road network area located northwest of East Anamosa Street and U.S. Highway 16B.





SUBJECT
PROPERTY

200

100

200

-008
84.09

-005
10.00

-003
20.00

2-007
14.83

1267
"V"
C-006
19.54

1-004
37.81

"Y"

"Z"

MALL

Detail H, 21-G

666.311
1-001 BB
6.64
3.88
2-002

Pl. 21-29-326-002
Pl. 35.67

401
Pl. -001
Pl. 69.28

14

21-30H

351
Pl. -001
Pl. 53.31

21-29F

21-29H

ST. R

226

CENTURY

SUBJECT
PROPERTY

502

227

Pl. X
Pl. 21-29-476
Pl. 25.16

-002
52.84

Pl. 21-32-2
Pl. 50.14

GG
2-003
24.46

21-32B

21-32C

RAPID CITY

Pl. I
Pl. 21-32-178-002
Pl. 12.41

Pl. 6
Pl. 21-32-251-002
Pl. 26.90

276

326

-006
31.09

-008
37.05

400

CHERRY

21-31H

CITY CORP.

001
10.00

376

-003
20.00

-004
40.00

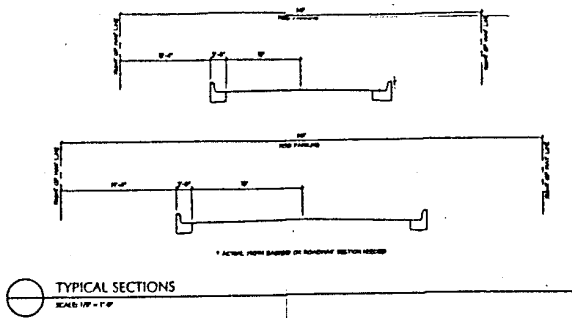
RAPID CITY

-002
10.00

40

CAMBELL R. RAPID

LINE

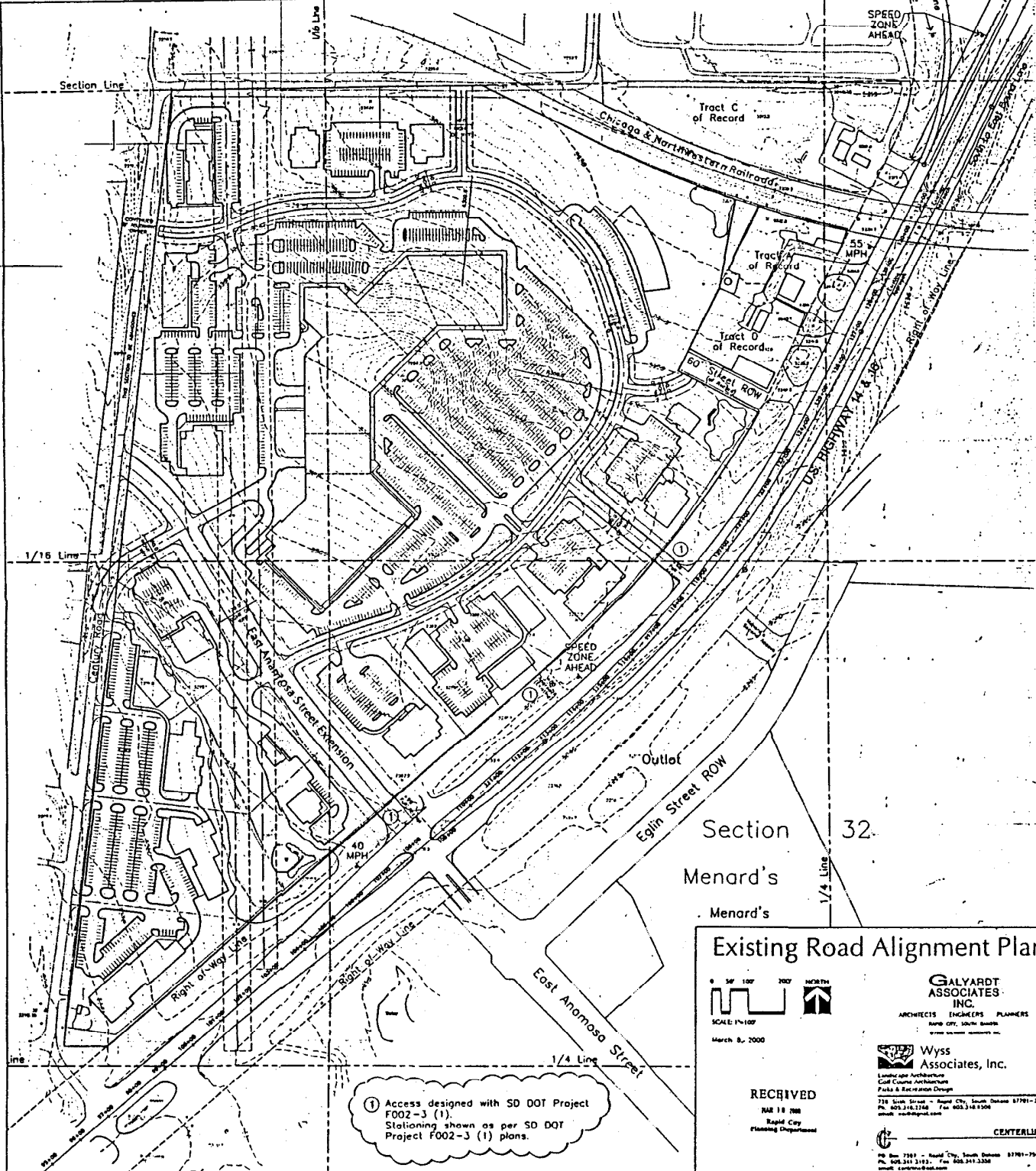


RAMP ADVISORY 80 MPH
Speed of Approach
From 1/4 Mile

RAMP ADVISORY 80 MPH
1/4 Mile

Section 29

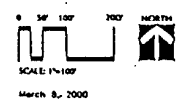
SPEED ZONE AHEAD



Section 32

Menard's
Menard's

Existing Road Alignment Plan



GALYARD ASSOCIATES, INC.
ARCHITECTS ENGINEERS PLANNERS
SOME OFF. SOUTH DAKOTA
www.galyard.com

Wyss Associates, Inc.
Landscape Architecture
Civil/Structural Architecture
Parks & Recreation Design

718 South Street - Rapid City, South Dakota 57701-1
PH: 605.343.2144 Fax: 605.343.4306
www.wyssassociates.com

RECEIVED
MAR 18 2000
Rapid City
Planning Department

CENTRAL

① Access designed with SD DOT Project F002-3 (1). Stationing shown as per SD DOT Project F002-3 (1) plans.

99 Box 7261 - Rapid City, South Dakota 57701-7261
PH: 605.341.3193 Fax: 605.341.3356
www.central.com