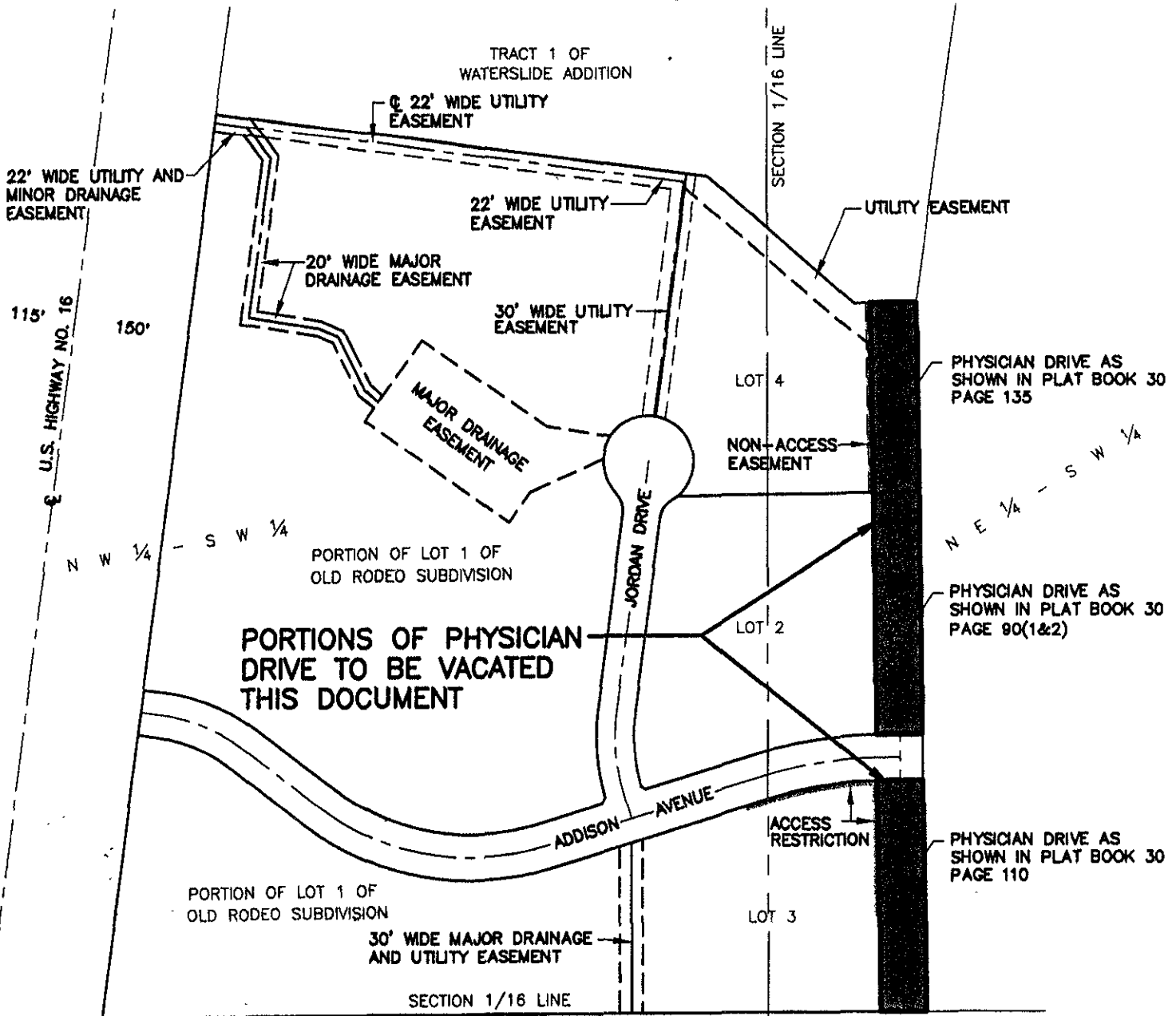


EXHIBIT 'A' VACATION OF RIGHT-OF-WAY OF PHYSICIAN DRIVE OLD RODEO SUBDIVISION

LOCATED IN THE NE 1/4 OF THE SW 1/4
SECTION 26, T1N, R7E, BHM,
RAPID CITY, PENNINGTON COUNTY, SOUTH DAKOTA



PORTIONS OF PHYSICIAN DRIVE TO BE VACATED THIS DOCUMENT

LOT B OF THE SW 1/4 OF THE SW 1/4 OF SECTION 26

MARCH 15, 2005



C:\Drawings\1440\EXB.dwg 3/15/2005 10:47:40 AM MST