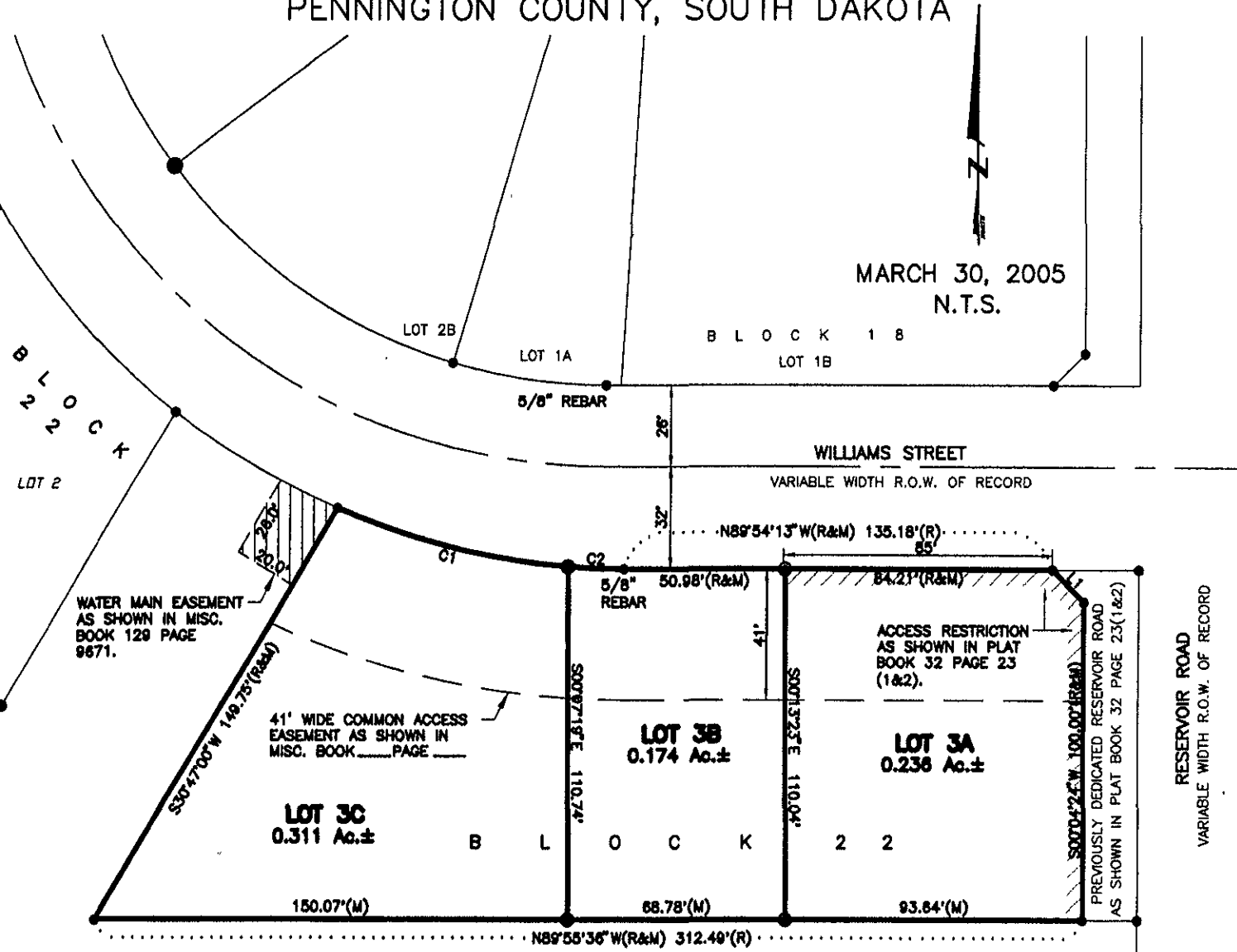


# PLAT OF LOTS 3A, 3B, AND 3C OF BLOCK 22, TRAILWOOD VILLAGE

(formerly all of Lot 3 of Block 22 of Trailwood Village)  
LOCATED IN THE SE<sup>1</sup>/<sub>4</sub> OF THE SE<sup>1</sup>/<sub>4</sub>  
SECTION 10, T1N, R8E, BHM  
PENNINGTON COUNTY, SOUTH DAKOTA



LINE	LENGTH	BEARING
L1(R&M)	14.14	S44°54'54" E

CURVE	LENGTH	RADIUS	DELTA	CHORD BEARING	CHORD DISTANCE
C1(M)	75.74	230.50	18°49'36"	S76°06'29" E	75.40
C2(M)	17.63	230.50	4°22'56"	S87°42'45" E	17.63
C1&C2(R)	93.37	230.50	23°12'32"	S78°17'57" E	92.73