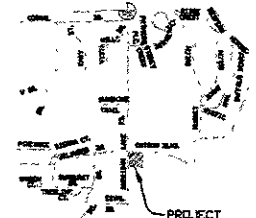
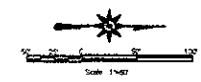


Proposed PCD Footprint  
Stoney Creek Plaza



RECEIVED

APR 29 2005

Rapid City Growth  
Management Department

Project Key

VTS

Centerline	Centerline
Outer Edge	Outer Edge
Inner Edge	Inner Edge
Right of Way	Right of Way
Proposed	Proposed
Existing	Existing
Utility	Utility
Survey	Survey
Boundary	Boundary
Property	Property

- Notes:**
- Use 2004 City of Rapid City Standard Specifications & Details
  - Field verify location & elevation of all existing features prior to beginning work.
  - Contact "ONE CALL" prior to beginning work.
  - Obtain Air Quality permit prior to beginning work.
  - Place & maintain sediment barrier; prevent sediment from leaving work zone.
  - Place "Construction Ahead" & "Truck Entrance" signs in Sheridan Lake Road and Catron Blvd.
  - Other signing as required. All per Manual of Uniform Traffic Control Devices (MUTCD).
  - Under Some Signages Connect to existing as needed.

**PARKING**

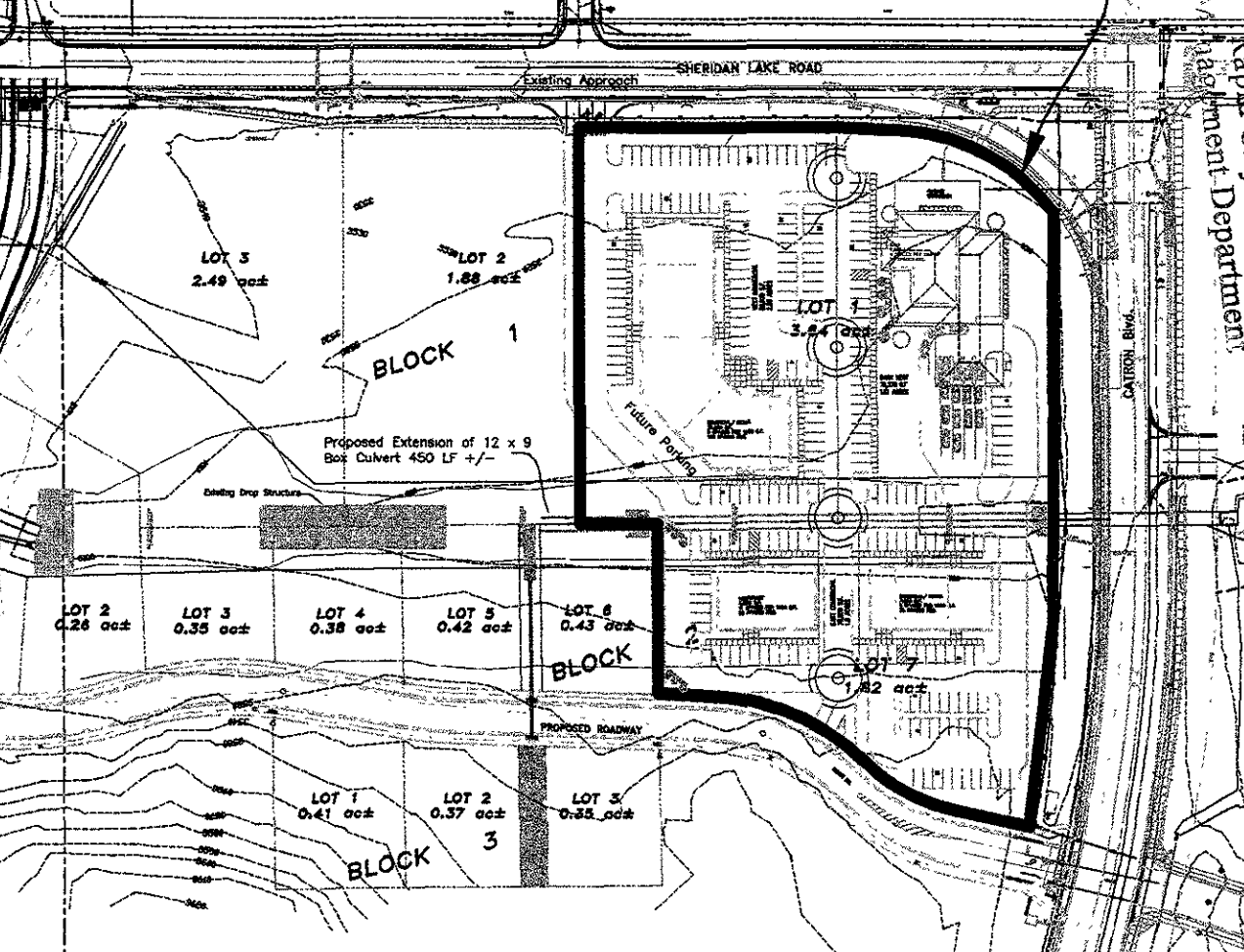
SPACES REQUIRED	36 SPACES
WEST COMMERCIAL	100 SPACES
EAST COMMERCIAL	66 SPACES
TOTAL REQUIRED	234 SPACES
SPACES PROVIDED	46 SPACES
WEST COMMERCIAL	112 SPACES
EAST COMMERCIAL	61 SPACES
TOTAL PROVIDED	230 SPACES

CITY OF RAPID CITY  
GROWTH MANAGEMENT DEPT  
DEVELOPMENT SERVICES

Plans are intended for general information only and are not to be used for construction. The City of Rapid City does not warrant the accuracy or completeness of the information contained herein. The City of Rapid City does not warrant the accuracy or completeness of the information contained herein. The City of Rapid City does not warrant the accuracy or completeness of the information contained herein.

REQUIREMENTS: \_\_\_\_\_

DATE: \_\_\_\_\_



Existing Approach

Existing 12'x9' Box Culvert

Proposed Extension of 12 x 9  
Box Culvert 450 LF +/-

LOT 3  
2.49 ac±

LOT 2  
1.88 ac±

LOT 1  
3.44 ac±

LOT 2  
0.26 ac±

LOT 3  
0.35 ac±

LOT 4  
0.38 ac±

LOT 5  
0.42 ac±

LOT 6  
0.43 ac±

LOT 7  
1.82 ac±

LOT 1  
0.41 ac±

LOT 2  
0.37 ac±

LOT 3  
0.35 ac±

BLOCK 1

BLOCK 2

BLOCK 3

SHERIDAN LAKE ROAD

CATRON BLVD.

PROPOSED ROADWAY

Existing Drop Structure

Future Parking

