

# RECEIVED

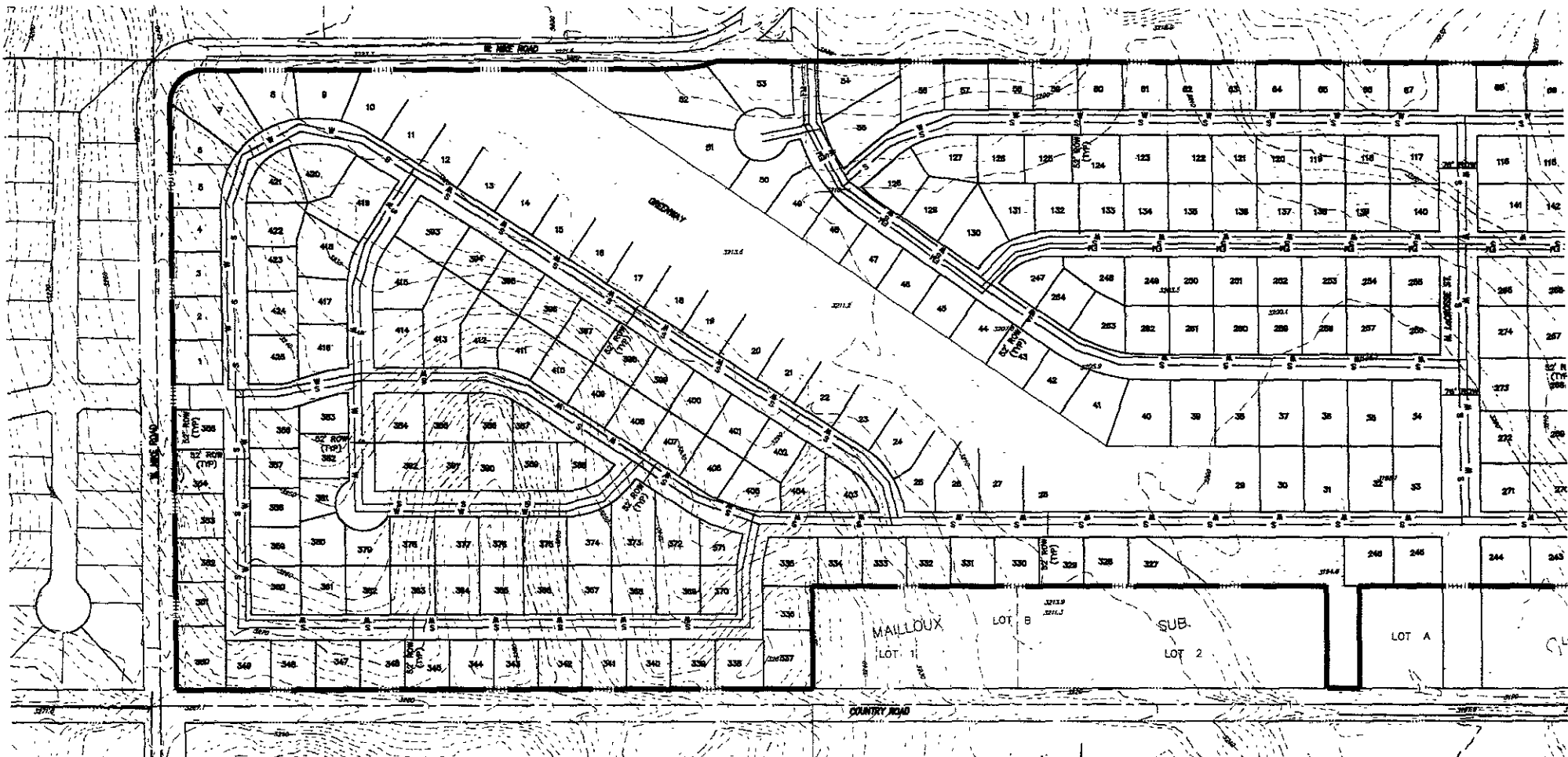
05SV012

JAN 28 2005

Rapid City Growth  
Management Department

## FREELAND MEADOWS SUBDIVISION

GOVERNMENT LOT 4 LESS ROW, THE UNPLATTED PORTION OF SE1/4SW1/4, AND THE UNPLATTED PORTION OF S1/2SE1/4,  
ALL IN SECTION 18, TOWNSHIP 2 NORTH, RANGE 8 EAST, BLACK HILLS MERIDIAN,  
PENNINGTON COUNTY, SOUTH DAKOTA



### DEVELOPMENT INFORMATION

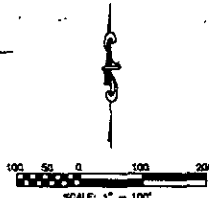
SUBMITTAL: LAYOUT PLAT  
 SUBDIVISION: FREELAND MEADOWS  
 CURRENT OWNER: SPF PROPERTIES AND KMF PROPERTIES  
 22428 PIONEER TRAIL  
 RAPID CITY, SD 57701  
 DEVELOPMENT ENGINEER: DREAM DESIGN INTERNATIONAL, INC.  
 EXISTING ZONING: GENERAL AGRICULTURE  
 PROPOSED ZONING: LOW DENSITY RESIDENTIAL  
 TOTAL SITE AREA: 146.8 ACRES

### LOW DENSITY RESIDENTIAL AREA

TOTAL RESIDENTIAL AREA: 146.8 ACRES  
 TOTAL YIELD: 425 LOTS  
 GROSS FLOOR AREA: 2.8 LOTS PER ACRE  
 RIGHT-OF-WAY AREA: 30.9 ACRES  
 AVERAGE LOT SIZE: 0.24 ACRES  
 MINIMUM LOT SIZE: 0.18 ACRES  
 LAND USE: LOW DENSITY RESIDENTIAL

### SITE DATA

ELEVATION RANGE: 3166 TO 3286  
 WATER SYSTEM: CITY OF RAPID CITY  
 STATIC WATER EL: 3550  
 SANITARY SEWER SYSTEM: CITY OF RAPID CITY  
 P.D. LIFT STATION EL: 3166

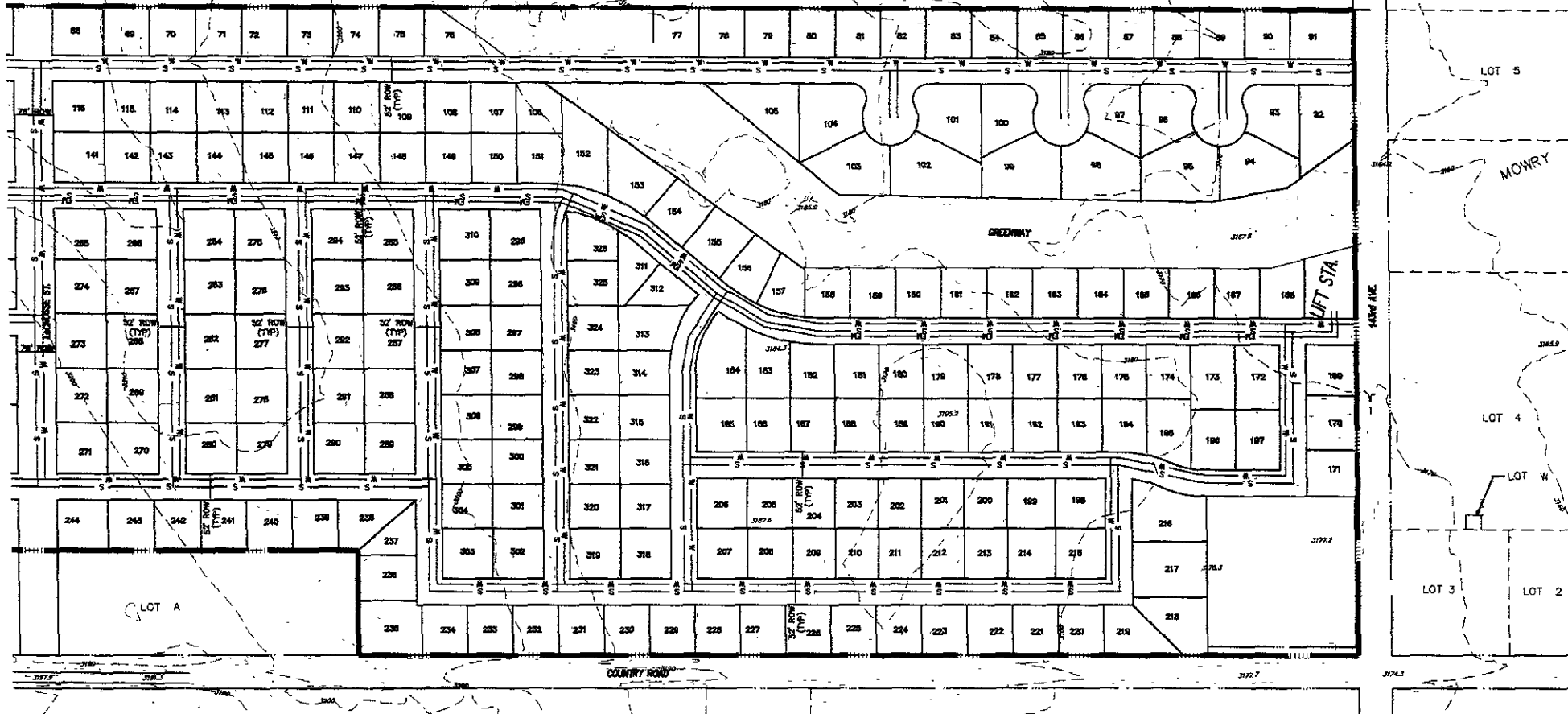


PROJECT: FREELAND MEADOWS SUBDIVISION  
 PROJECT NO: 05-0385  
 DATE: JANUARY 28, 2005  
 SHEET 1 OF 2

**D.D.I.**  
**DREAM DESIGN INTERNATIONAL, INC.**  
 PROFESSIONAL STRUCTURAL & CIVIL ENGINEERING CONSULTANTS  
 408 KANSAS CITY ST., SUITE 4, RAPID CITY, SD 57701  
 P: 605-348-0894 FAX: 605-348-0846 EMAIL: mjg@dreamdesigninc.com

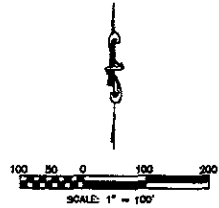
# FREELAND MEADOWS SUBDIVISION

GOVERNMENT LOT 4 LESS ROW, THE UNPLATTED PORTION OF SE1/4SW1/4, AND THE UNPLATTED PORTION OF S1/2SE1/4,  
ALL IN SECTION 18, TOWNSHIP 2 NORTH, RANGE 8 EAST, BLACK HILLS MERIDIAN,  
PENNINGTON COUNTY, SOUTH DAKOTA



## RECEIVED

JAN 28 2005



PROJECT-FREELAND MEADOWS SUBDIVISION  
PROJECT NO. 05-0385  
DATE-JANUARY 28, 2005  
SHEET 2 OF 2

**D.D.I.**  
**DREAM DESIGN INTERNATIONAL, INC.**  
PROFESSIONAL STRUCTURAL & CIVIL ENGINEERING CONSULTANTS  
428 KANSAS CITY DR., SUITE 4, RAPID CITY, SD 57701  
TEL. 605-546-0823 FAX 605-546-0845 EMAIL: eng@dreamdesigninc.com

Rapid City Growth  
Management Department